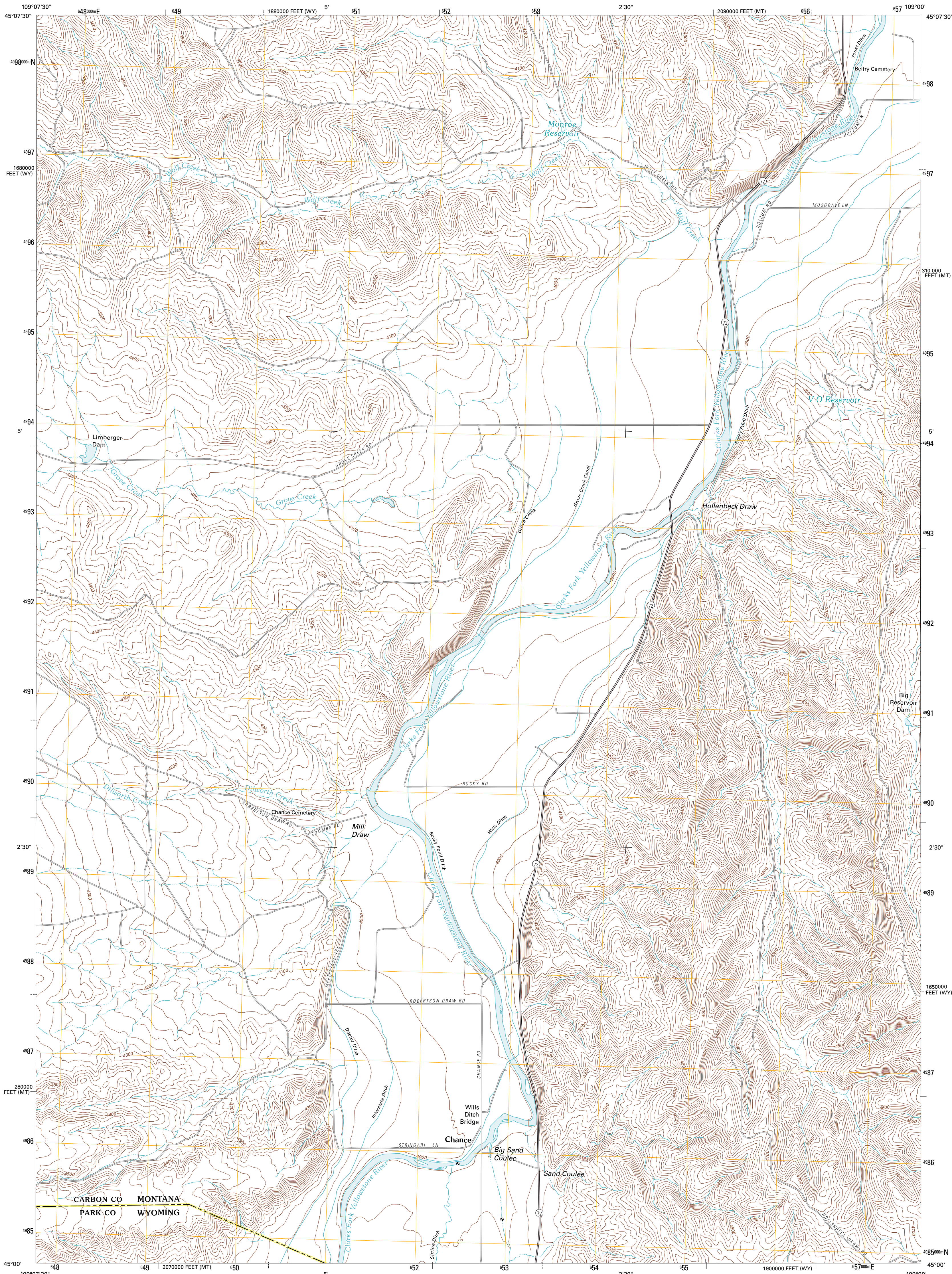




U.S. DEPARTMENT OF THE INTERIOR
U. S. GEOLOGICAL SURVEY



HOLLENBECK DRAW QUADRANGLE
MONTANA-WYOMING
7.5-MINUTE SERIES

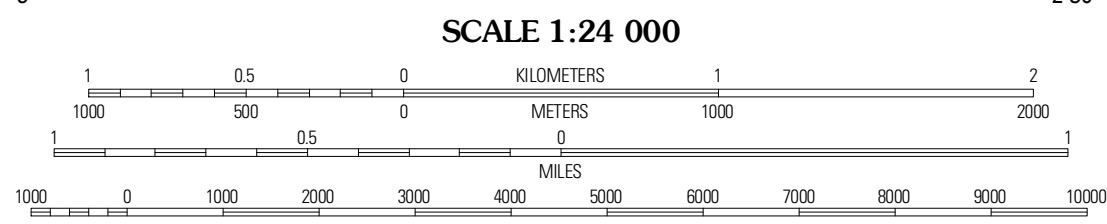


Produced by the United States Geological Survey
North American Datum of 1983 (NAD83)
World Geodetic System of 1984 (WGS84). Projection and
1 000-meter grid: Universal Transverse Mercator, Zone 12T
10 000-foot ticks: Montana Coordinate System of 1983,
Wyoming Coordinate System of 1983 (west central zone)

Imagery.....NAIP, June 2009
Roads.....©2006-2010 Tele Atlas
Names.....GNIS, 2010
Hydrography.....National Hydrography Dataset, 2009
Contours.....National Elevation Dataset, 2002
Boundaries.....Census, IBWC, IBC, USGS, 1972 - 2010

UTM GRID AND 2011 MAGNETIC NORTH
DECLINATION AT CENTER OF SHEET

U.S. National Grid 100,000m Square ID
X0
Grid Zone Designation 12T



CONTOUR INTERVAL 20 FEET
NORTH AMERICAN VERTICAL DATUM OF 1988

This map was produced to conform with version 0.5.10
of the USGS US Topo Product Standard.
A metadata file associated with this product is draft version 0.5.16



QUADRANGLE LOCATION

Red Lodge East	Belfry	Hatcher Pass
Tobacco Flat	Hollenbeck Draw	Long Draw
Clark	Budger Basin	Elk Basin NW

ADJOINING 7.5' QUADRANGLES

ROAD CLASSIFICATION	
Interstate Route	State Route
US Route	Local Road
Ramp	4WD
Interstate Route	US Route
	State Route

HOLLENBECK DRAW, MT-WY
2011