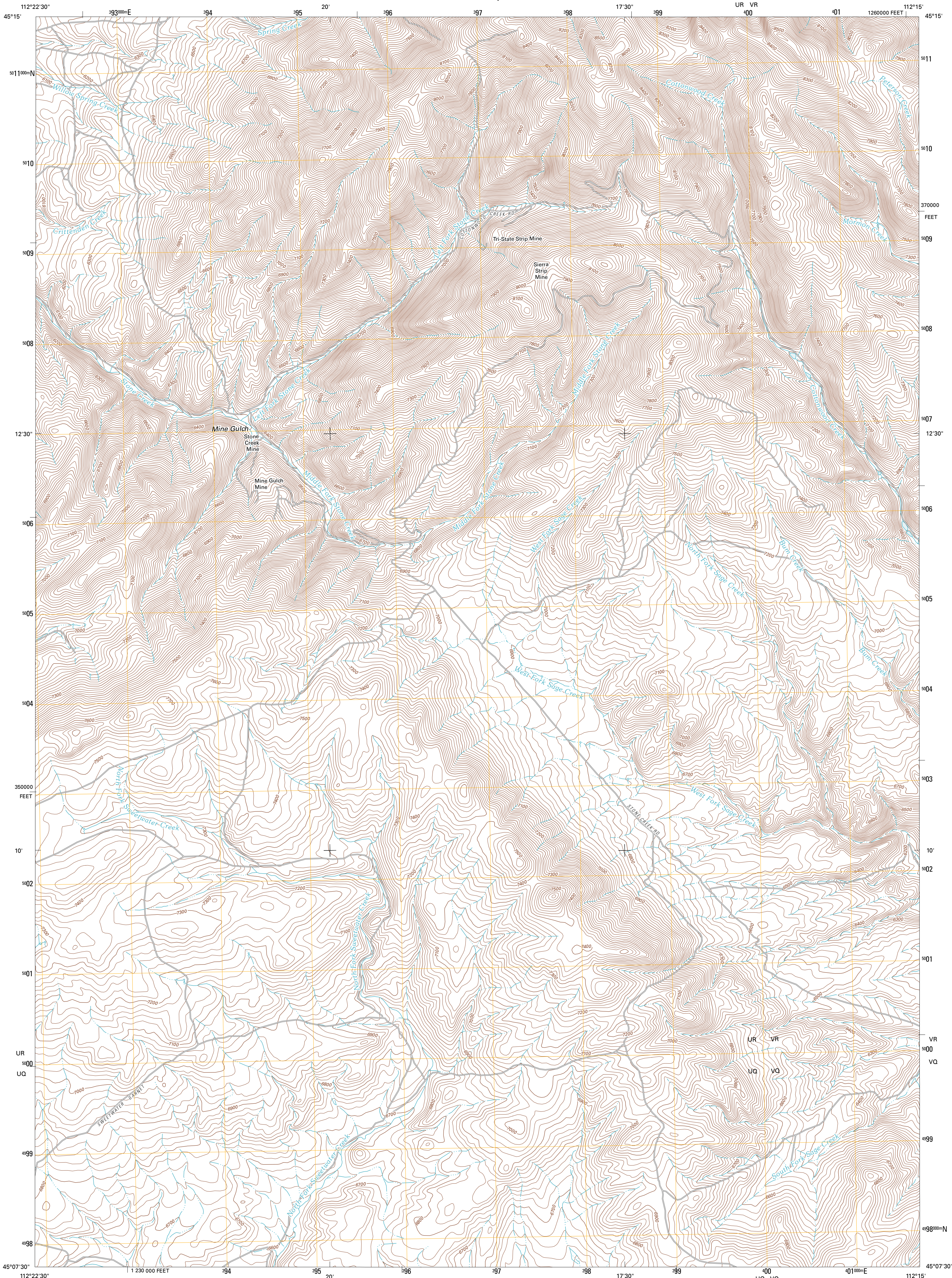




U.S. DEPARTMENT OF THE INTERIOR
U. S. GEOLOGICAL SURVEY

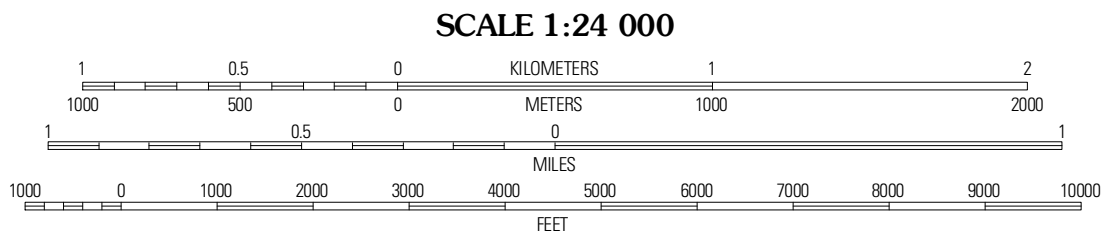
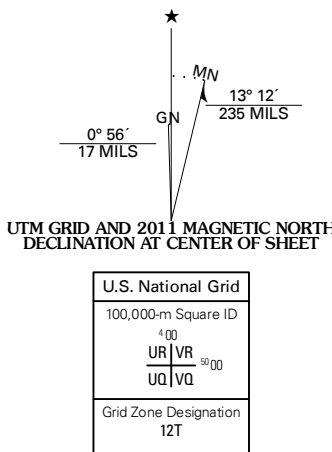


MINE GULCH QUADRANGLE
MONTANA-MADISON CO.
7.5-MINUTE SERIES



Produced by the United States Geological Survey
North American Datum of 1983 (NAD83)
World Geodetic System of 1984 (WGS84). Projection and
1 000-meter grid: Universal Transverse Mercator, Zone 12T
10 000-foot ticks: Montana Coordinate System of 1983

Imagery.....NAIP, July 2009
Roads.....©2006-2010 Tele Atlas
Names.....GNIS, 2010
Hydrography.....National Hydrography Dataset, 2009
Contours.....National Elevation Dataset, 2006
Boundaries.....Census, IBWC, IBC, USGS, 1972 - 2010



CONTOUR INTERVAL 20 FEET
NORTH AMERICAN VERTICAL DATUM OF 1988
This map was produced to conform with version 0.5.10
of the USGS US Topo Product Standard.
A metadata file associated with this product is draft version 0.5.16



ROAD CLASSIFICATION
Interstate Route
US Route
Ramp
State Route
Local Road
4WD
Interstate Route
US Route
State Route

| QUADRANGLE LOCATION | | |
|-----------------------|-----------------------|-----------------------|
| Beaverhead Rock SW | Beaverhead Rock SE | Laurin Canyon |
| Christensen Ranch | Mine Gulch | Metz Ranch |
| Elk Gulch | Red Canyon | Belmont Park Ranch |

MINE GULCH, MT
2011