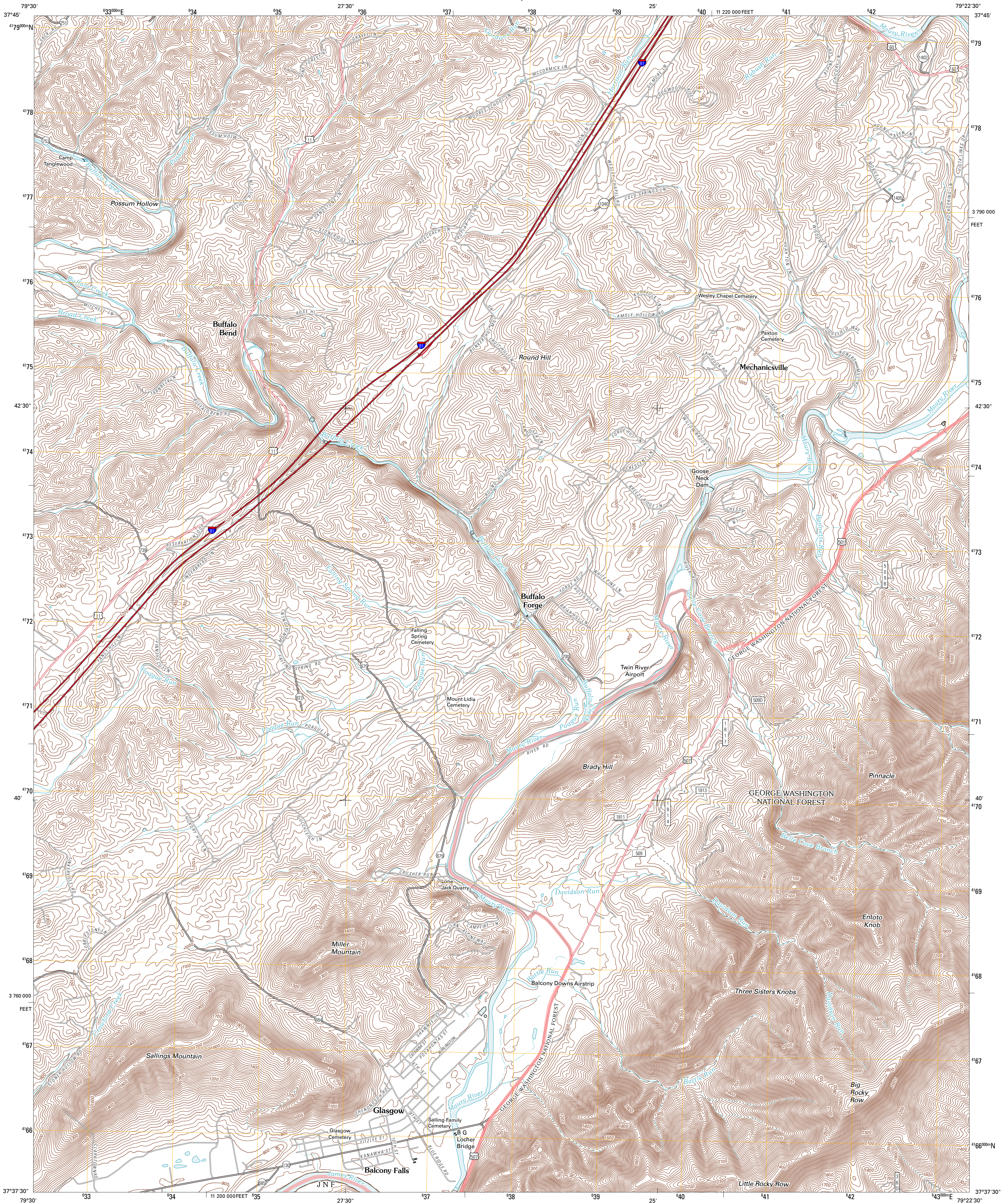




U.S. DEPARTMENT OF THE INTERIOR
U. S. GEOLOGICAL SURVEY



GLASGOW QUADRANGLE
VIRGINIA
7.5-MINUTE SERIES



Produced by the United States Geological Survey
North American Datum of 1983 (NAD83)
World Geodetic System of 1984 (WGS84). Projection and
1 000-meter grid: Universal Transverse Mercator, Zone 17S
10 000-foot ticks: Virginia Coordinate System of 1983 (south
zone)

Imagery:.....NAIP, September 2009
Roads:.....©2006-2010 Tele Atlas
Roads within US Forest Service Lands:.....FSTopo Data
with limited Forest Service updates, 2009
Names:.....GNIS, 2010
Hydrography:.....National Hydrography Dataset, 2009
Contours:.....National Elevation Dataset, 1999

UTM GRID AND 2011 MAGNETIC NORTH
DECLINATION AT CENTER OF SHEET

U.S. National Grid
100,000-m Square ID
PB
Grid Zone Designation
17S

SCALE 1:24 000

1 000 0 500 0 500 1 000 2 000
KILOMETERS
1 000 0 1000 2000 3000 4000 5000 6000 7000 8000 9000 10000
METERS
1 000 0 1000 2000 3000 4000 5000 6000 7000 8000 9000 10000
FEET

CONTOUR INTERVAL 20 FEET
NORTH AMERICAN VERTICAL DATUM OF 1988

This map was produced to conform with version 0.5.10 of the
draft USGS Standards for 7.5-Minute Quadrangle Maps.
A metadata file associated with this product is draft version 0.5.12



QUADRANGLE LOCATION		
Collierstown	Lexington	Cornwall
Natural Bridge	Glasgow	Buena Vista
Arnold Valley	Snowden	Big Island

ROAD CLASSIFICATION

Interstate Route
US Route
Ramp
State Route
Local Road
4WD

Interstate Route
US Route
FS Primary Route
FS Passenger Route
FS High Clearance Route

Check with local Forest Service unit
for current travel conditions and restrictions.

GLASGOW, VA
2011