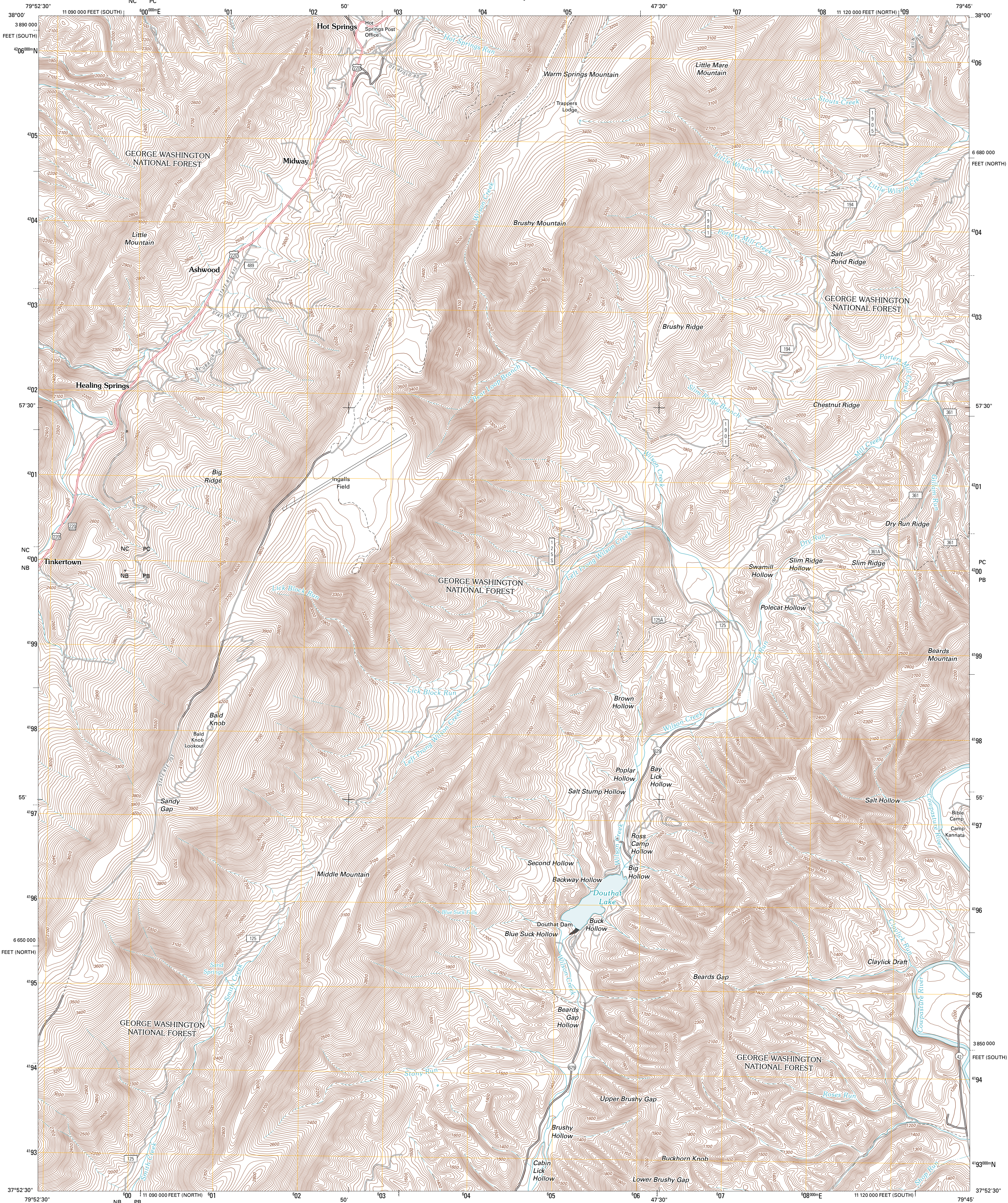




U.S. DEPARTMENT OF THE INTERIOR
U. S. GEOLOGICAL SURVEY

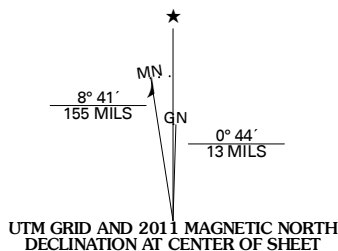


HEALING SPRINGS QUADRANGLE
VIRGINIA
7.5-MINUTE SERIES

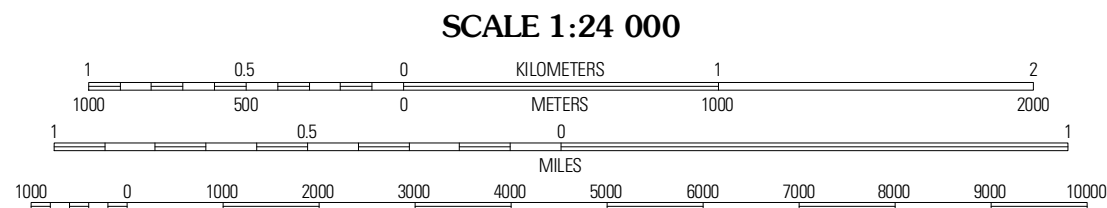


Produced by the United States Geological Survey
North American Datum of 1983 (NAD83)
World Geodetic System of 1984 (WGS84). Projection and
1 000-meter grid: Universal Transverse Mercator, Zone 17S
10 000-foot ticks: Virginia Coordinate System of 1983 (north
and south zones)

Imagery.....NAIP, August 2009 - September 2009
Roads.....©2006-2010 Tele Atlas
Roads within US Forest Service Lands.....FS Topo Data
with limited Forest Service updates, 2009
Names.....GNIS, 2010
Hydrography.....National Hydrography Dataset, 2009
Contours.....National Elevation Dataset, 2002



U.S. National Grid
100,000-m Square ID
10
NCPC
NBFB
Grid Zone Designation
17S



CONTOUR INTERVAL 40 FEET
NORTH AMERICAN VERTICAL DATUM OF 1988
This map was produced to conform with version 0.5.10 of the
draft USGS Standards for 7.5-Minute Quadrangle Maps.
A metadata file associated with this product is draft version 0.5.12



Mountain Grove	Warm Springs	Bath Alum
Falling Spring	Healing Springs	Nimrod Hall
Conington	Clifton Forge	Longdale Furnace

ROAD CLASSIFICATION
Interstate Route
US Route
State Route
Local Road
4WD
FS Primary Route
US Route
FS Passenger
Route
FS High Clearance
Route
Check with local Forest Service unit
for current travel conditions and restrictions.

HEALING SPRINGS, VA
2011

ADJOINING 7.5 QUADRANGLES