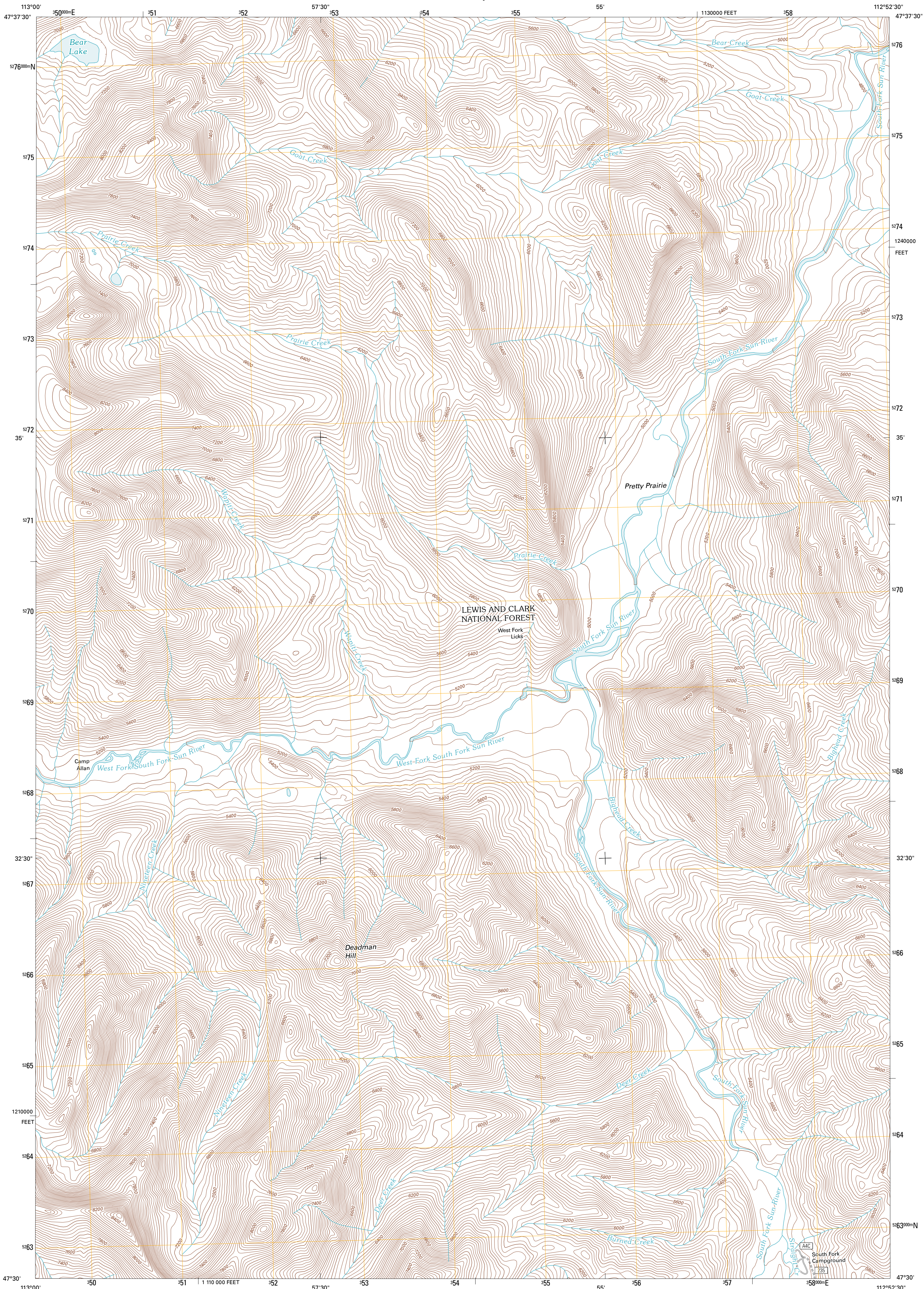




U.S. DEPARTMENT OF THE INTERIOR
U. S. GEOLOGICAL SURVEY

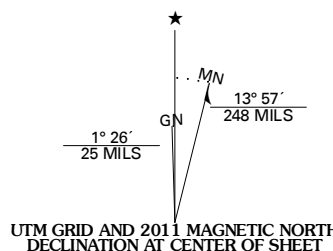


PRETTY PRAIRIE QUADRANGLE
MONTANA-LEWIS AND CLARK CO.
7.5-MINUTE SERIES

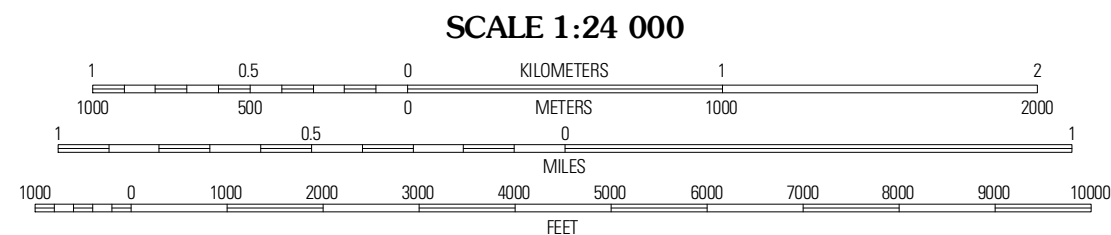


Produced by the United States Geological Survey
North American Datum of 1983 (NAD83)
World Geodetic System of 1984 (WGS84). Projection and
1 000 meter grid: Universal Transverse Mercator, Zone 12T
10 000-foot ticks: Montana Coordinate System of 1983

Imagery.....NAIP, July 2009
Roads.....2006-2010 Tele Atlas
Roads within US Forest Service Lands.....FS Topo Data
with limited Forest Service updates, 2009
Names.....GNIS, 2010
Hydrography.....National Hydrography Dataset, 2009
Contours.....National Elevation Dataset, 1999
Boundaries.....Census, IBWC, IBC, USGS, 1972 - 2010



U.S. National Grid 100,000m Square ID
UT
Grid Zone Designation 12T



CONTOUR INTERVAL 40 FEET
NORTH AMERICAN VERTICAL DATUM OF 1988
This map was produced to conform with version 0.5.10
of the USGS US Topo Product Standard.
A metadata file associated with this product is draft version 0.5.16



Slatepost Mountain	Glen Creek	Arsonic Mountain
Prairie Reef	Pretty Prairie	Patricks Basin
Trap Mountain	Benchmark	Wood Lake

ROAD CLASSIFICATION

Interstate Route	State Route
US Route	Local Road
Ramp	4WD

Interstate Route
US Route
Ramp
FS Primary Route
US Route
FS Passenger Route
FS High Clearance Route
State Route
4WD
FS High Clearance Route

Check with local Forest Service unit
for current travel conditions and restrictions.

PRETTY PRAIRIE, MT
2011