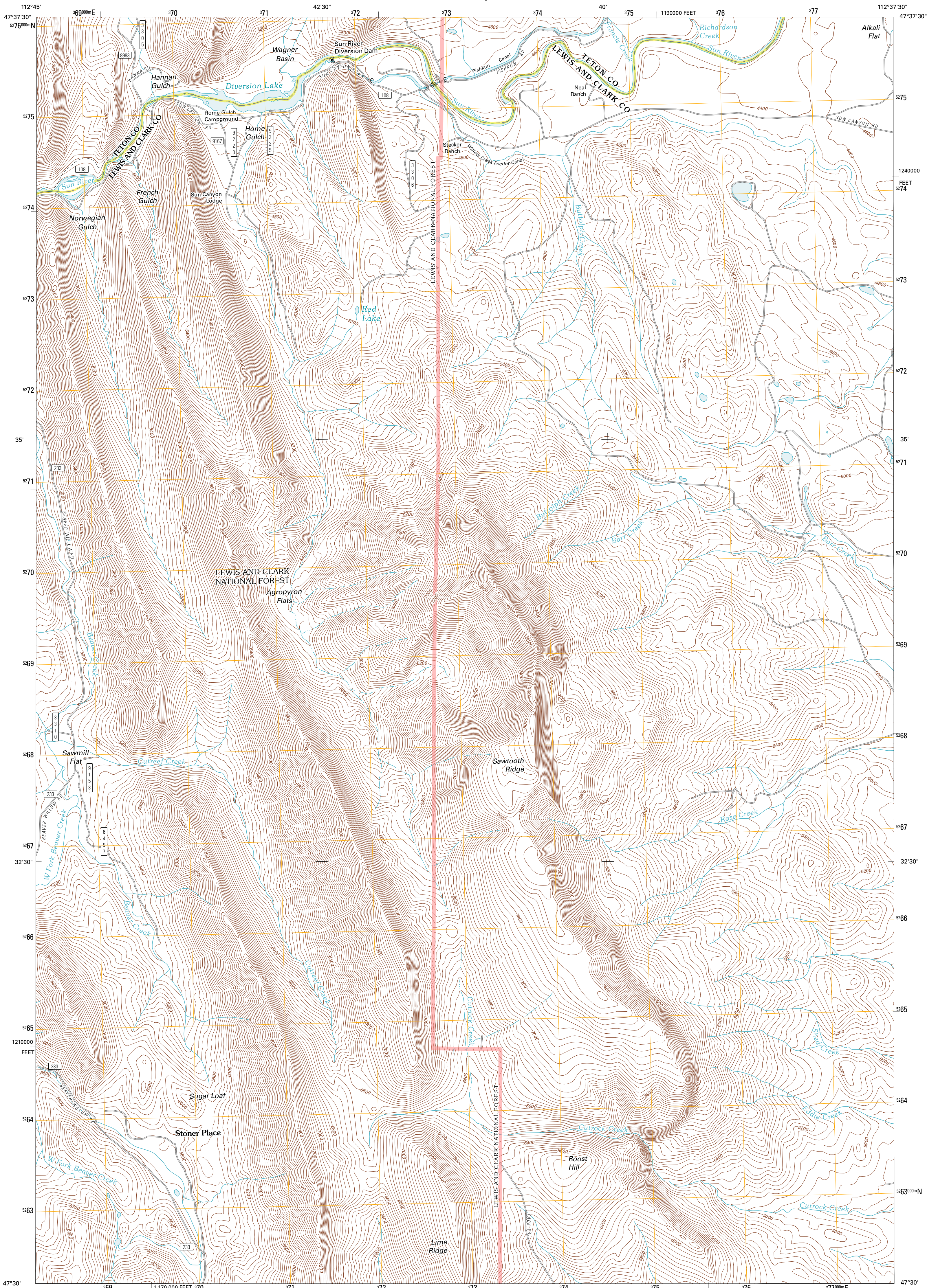




U.S. DEPARTMENT OF THE INTERIOR  
U. S. GEOLOGICAL SURVEY

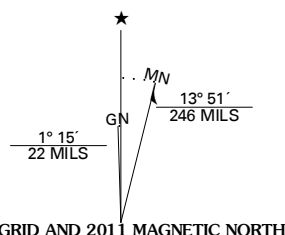


SAWTOOTH RIDGE QUADRANGLE  
MONTANA  
7.5-MINUTE SERIES

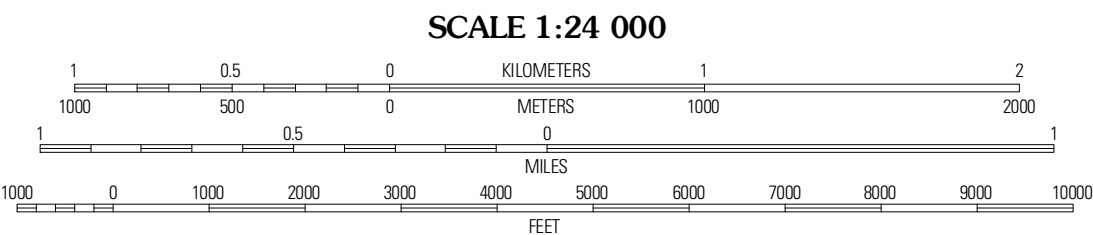


Produced by the United States Geological Survey  
North American Datum of 1983 (NAD83)  
World Geodetic System of 1984 (WGS84). Projection and  
1 000-meter grid. Universal Transverse Mercator, Zone 12T  
10 000-foot ticks: Montana Coordinate System of 1983

Imagery.....NAIP, July 2009  
Roads.....2006-2010 Tele Atlas  
Roads within US Forest Service Lands.....FS Topo Data  
with limited Forest Service updates, 2009  
Names.....GNIS, 2010  
Hydrography.....National Hydrography Dataset, 2009  
Contours.....National Elevation Dataset, 1999  
Boundaries.....Census, IBWC, IBC, USGS, 1972 - 2010



U.S. National Grid
100,000-m Square ID
UT
Grid Zone Designation
12T



CONTOUR INTERVAL 40 FEET  
NORTH AMERICAN VERTICAL DATUM OF 1988  
This map was produced to conform with version 0.5.10  
of the USGS US Topo Product Standard.  
A metadata file associated with this product is draft version 0.5.16



Aspen Mountain	Cattle Reef	Split Rock Lake
Patrick's Basin	Sawtooth Ridge	Barr Creek
Wood Lake	Double Falls	Nolan Reservoir

**ROAD CLASSIFICATION**

Interstate Route	State Route
US Route	Local Road
Ramp	4WD

Interstate Route  
US Route  
FS Primary Route  
FS Passenger Route  
FS High Clearance Route

Check with local Forest Service unit  
for current travel conditions and restrictions.

SAWTOOTH RIDGE, MT  
2011