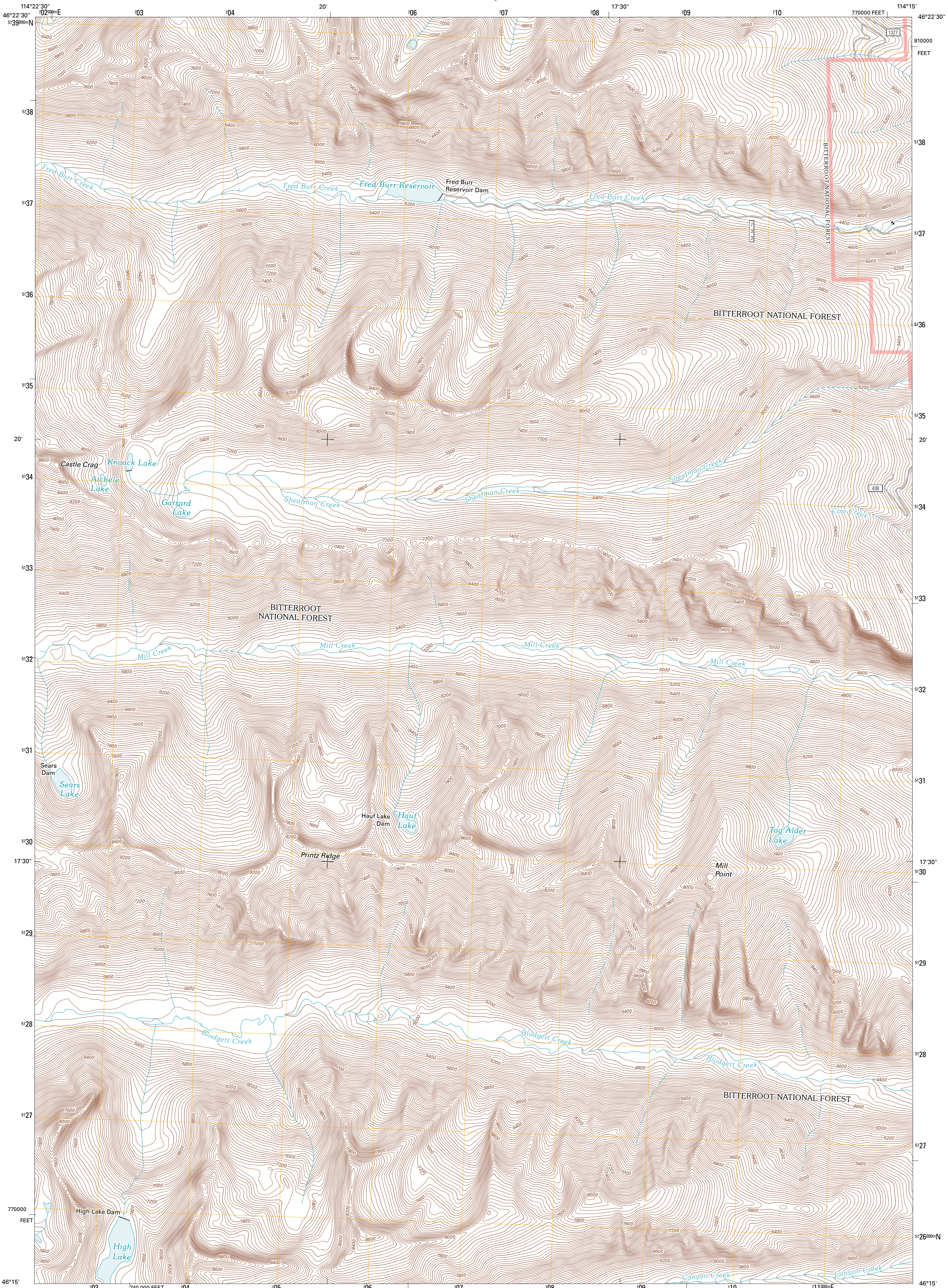




U.S. DEPARTMENT OF THE INTERIOR
U. S. GEOLOGICAL SURVEY



PRINTZ RIDGE QUADRANGLE
MONTANA-RAVALLI CO.
7.5-MINUTE SERIES

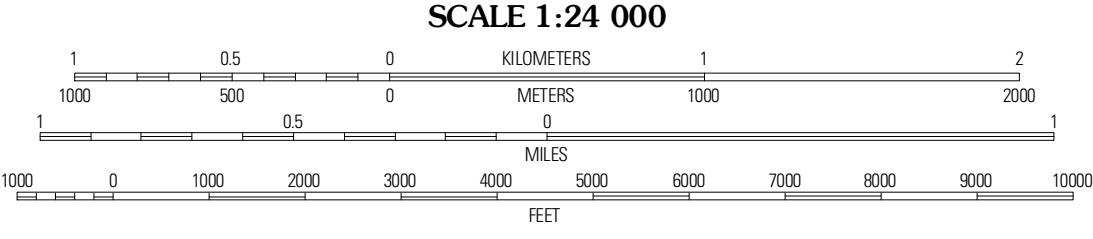


Produced by the United States Geological Survey
North American Datum of 1983 (NAD83)
World Geodetic System of 1984 (WGS84). Projection and
1 000-meter grid: Universal Transverse Mercator, Zone 11T
10 000-foot ticks: Montana Coordinate System of 1983

Imagery.....NAIP, July 2009
Roads.....©2006-2010 Tele Atlas
Roads within US Forest Service Lands.....FSTopo Data
with limited Forest Service updates, 2009
Names.....National Hydrography Dataset, 2010
Hydrography.....National Elevation Dataset, 2009
Contours.....National Elevation Dataset, 2004
Boundaries.....Census, IBWC, IBC, USGS, 1972 - 2010

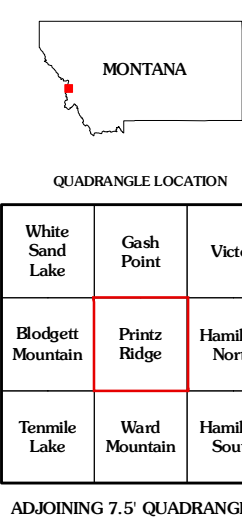
UTM GRID AND 2011 MAGNETIC NORTH
DECLINATION AT CENTER OF SHEET

U.S. National Grid
100,000-m Square ID
QM
Grid Zone Designation
11T



CONTOUR INTERVAL 40 FEET
NORTH AMERICAN VERTICAL DATUM OF 1988

This map was produced to conform with version 0.5.10
of the USGS US Topo Product Standard.
A metadata file associated with this product is draft version 0.5.16



ROAD CLASSIFICATION

Interstate Route
US Route
Ramp

State Route
Local Road
4WD

Interstate Route
US Route
FS Passenger Route
FS High Clearance Route

Check with local Forest Service unit
for current travel conditions and restrictions.

PRINTZ RIDGE, MT
2011