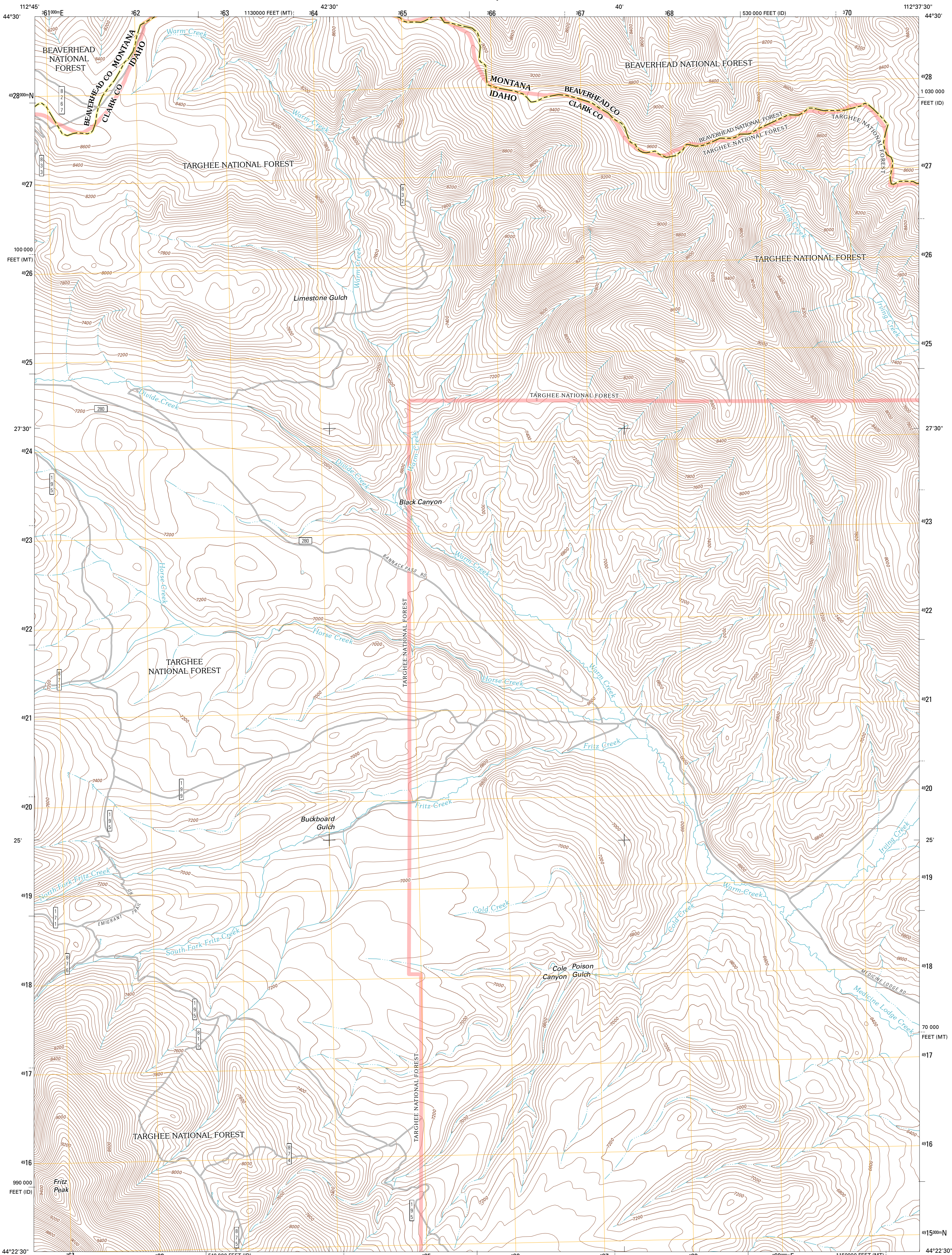




U.S. DEPARTMENT OF THE INTERIOR  
U. S. GEOLOGICAL SURVEY

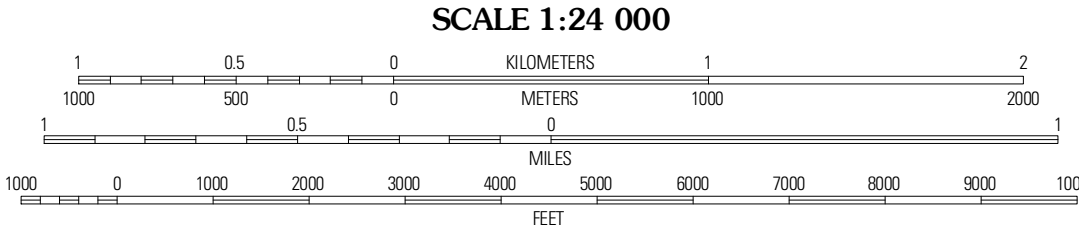
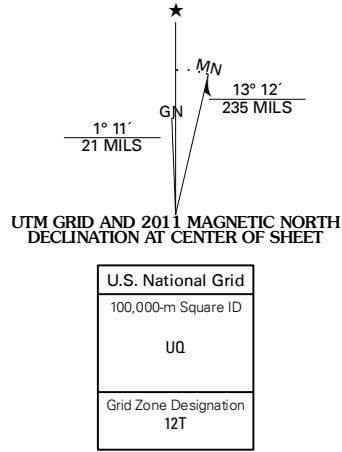


FRITZ PEAK QUADRANGLE  
IDAHO-MONTANA  
7.5-MINUTE SERIES



Produced by the United States Geological Survey  
North American Datum of 1983 (NAD83)  
World Geodetic System of 1984 (WGS84). Projection and  
1 000-meter grid: Universal Transverse Mercator, Zone 12T  
10 000-foot ticks: Idaho Coordinate System of 1983 (east  
zone), Montana Coordinate System of 1983

Imagery.....NAMP, July 2009  
Roads.....0206-2010 Tele Atlas  
Roads within US Forest Service Lands.....FSTopo Data  
with limited Forest Service updates, 2009  
Names.....GNIS, 2010  
Hydrography.....National Hydrography Dataset, 2009  
Contours.....National Elevation Dataset, 2002  
Boundaries.....Census, IBWC, IBC, USGS, 1972 - 2010



CONTOUR INTERVAL 40 FEET  
NORTH AMERICAN VERTICAL DATUM OF 1988  
This map was produced to conform with version 0.5.10  
of the USGS US Topo Product Standard.  
A metadata file associated with this product is draft version 0.5.16



QUADRANGLE LOCATION

Caboose Canyon	Gallagher Gulch	Lima Peaks
Deadman Lake	Fritz Peak	Edie Creek
Scott Peak	Heart Mountain	Rocky Creek

ADJOINING 7.5 QUADRANGLES

ROAD CLASSIFICATION  
Interstate Route  
US Route  
Ramp  
State Route  
Local Road  
4WD  
Interstate Route  
US Route  
FS Passenger Route  
FS Primary Route  
FS High Clearance Route  
Check with local Forest Service unit  
for current travel conditions and restrictions.

FRITZ PEAK, ID-MT  
2011