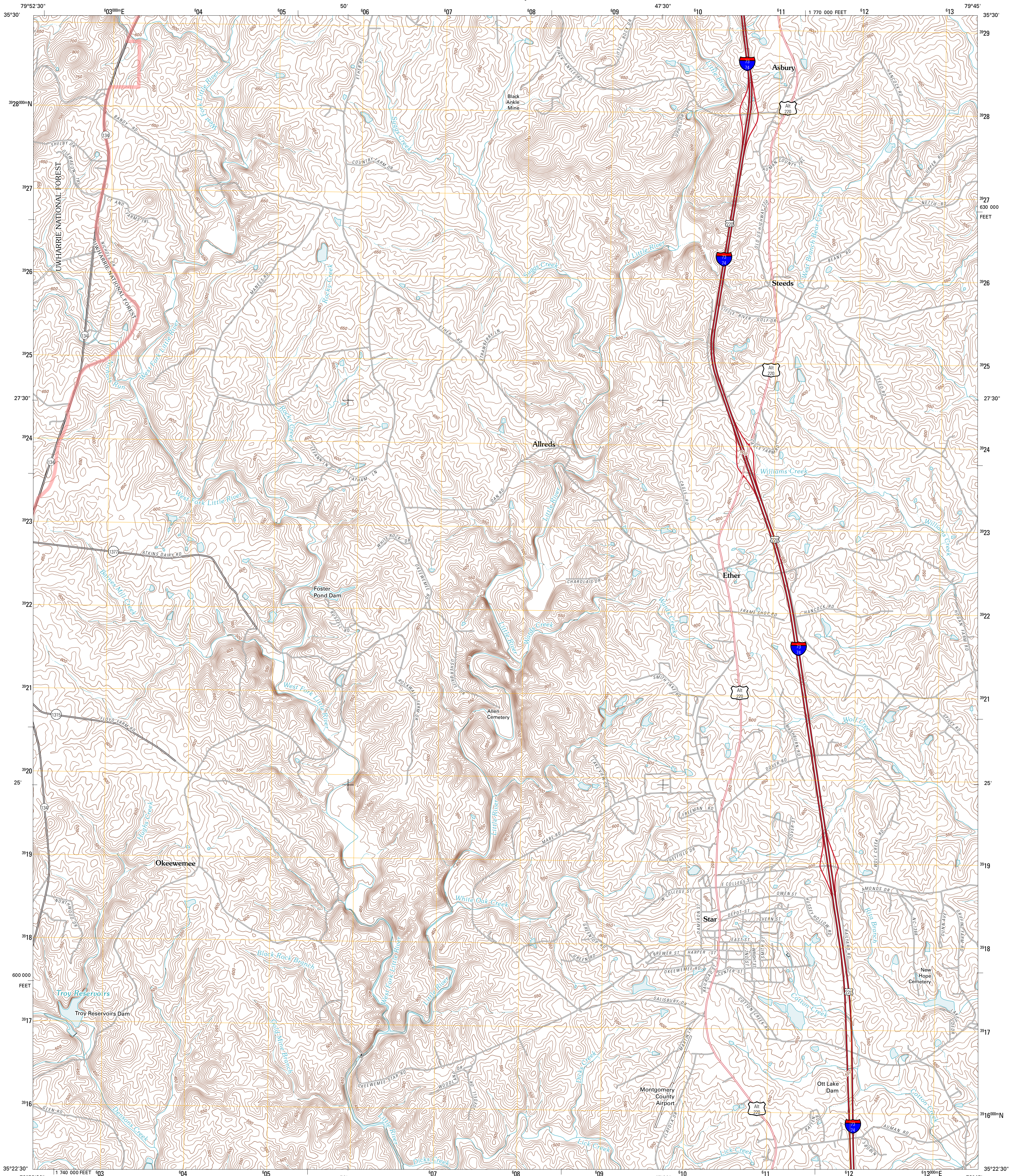




U.S. DEPARTMENT OF THE INTERIOR
U. S. GEOLOGICAL SURVEY



STAR QUADRANGLE
NORTH CAROLINA
7.5-MINUTE SERIES

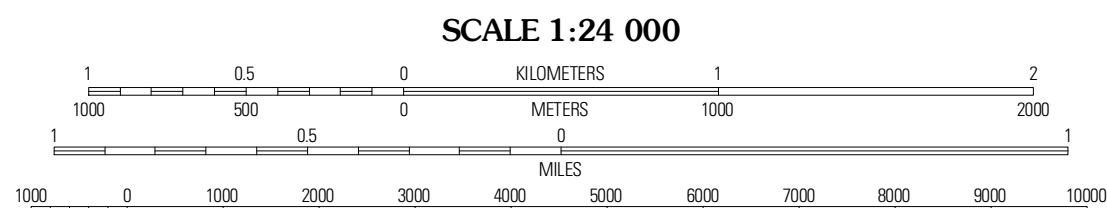


Produced by the United States Geological Survey
North American Datum of 1983 (NAD83)
World Geodetic System of 1984 (WGS84), Projection and
1 000-meter grid: North Carolina Coordinate System of 1983

Imagery.....NAIP, August 2009 - September 2009
Roads.....©2006-2010 Tele Atlas
Roads within US Forest Service Lands.....FS Topo Data
with limited Forest Service updates, 2009
Names.....GNIS, 2010
Hydrography.....National Hydrography Dataset, 2009
Contours.....National Elevation Dataset, 2008

UTM GRID AND 2011 MAGNETIC NORTH
DECLINATION AT CENTER OF SHEET

U.S. National Grid
100,000-m Square ID
PV
Grid Zone Designation
17S



CONTOUR INTERVAL 10 FEET
NORTH AMERICAN VERTICAL DATUM OF 1988
This map was produced to conform with version 0.5.10 of the
draft USGS Standards for 7.5-Minute Quadrangle Maps.
A metadata file associated with this product is draft version 0.5.12



QUADRANGLE LOCATION		
Elmer	Seagrove	Erect
Lenoir	Star	Spies
Troy	Blacoe	Candler

ROAD CLASSIFICATION
Interstate Route
US Route
Ramp
FS Primary Route
State Route
Local Road
4WD
FS Passenger Route
FS High Clearance Route
Check with local Forest Service unit
for current travel conditions and restrictions.

STAR, NC
2011