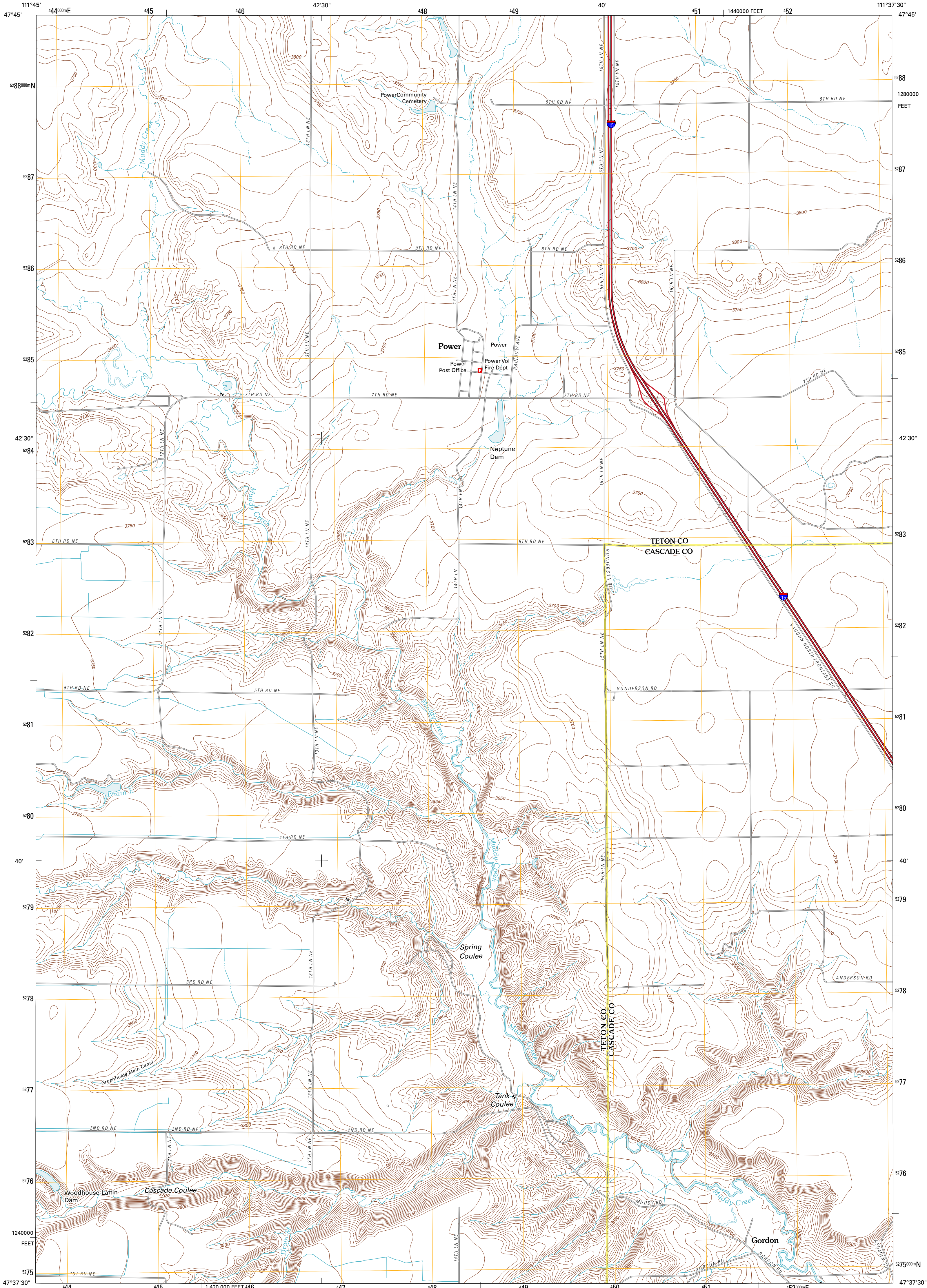




U.S. DEPARTMENT OF THE INTERIOR  
U. S. GEOLOGICAL SURVEY

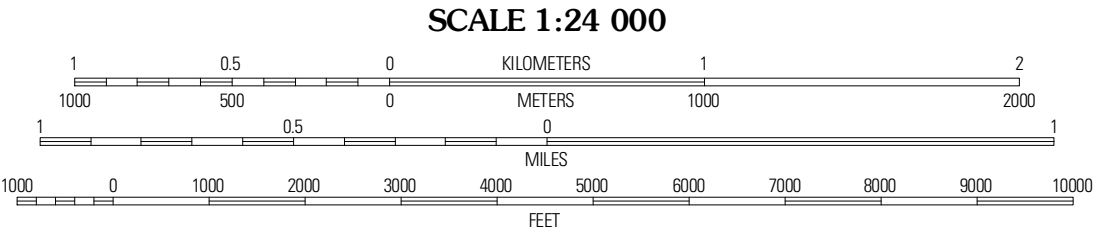
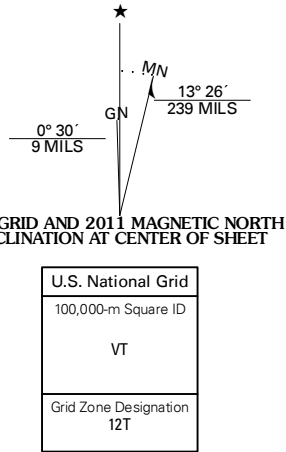


POWER QUADRANGLE  
MONTANA  
7.5-MINUTE SERIES



Produced by the United States Geological Survey  
North American Datum of 1983 (NAD83)  
World Geodetic System of 1984 (WGS84). Projection and  
1 000-meter grid. Universal Transverse Mercator, Zone 12T  
10 000-foot ticks. Montana Coordinate System of 1983

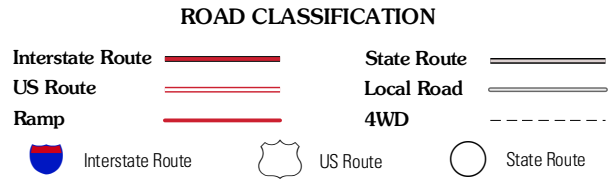
Imagery.....NAIP, July 2009  
Roads.....©2006-2010 Tele Atlas  
Names.....GNS, 2010  
Hydrography.....National Hydrography Dataset, 2009  
Contours.....National Elevation Dataset, 2006  
Boundaries.....Census, IBWC, IBC, USGS, 1972 - 2010



QUADRANGLE LOCATION

Callins SE	Dutton SE	Dutton SE
Greenfield	Power	Vaughn NE
Fort Shaw	Sun River	Vaughn

ADJOINING 7.5 QUADRANGLES



POWER, MT  
2011