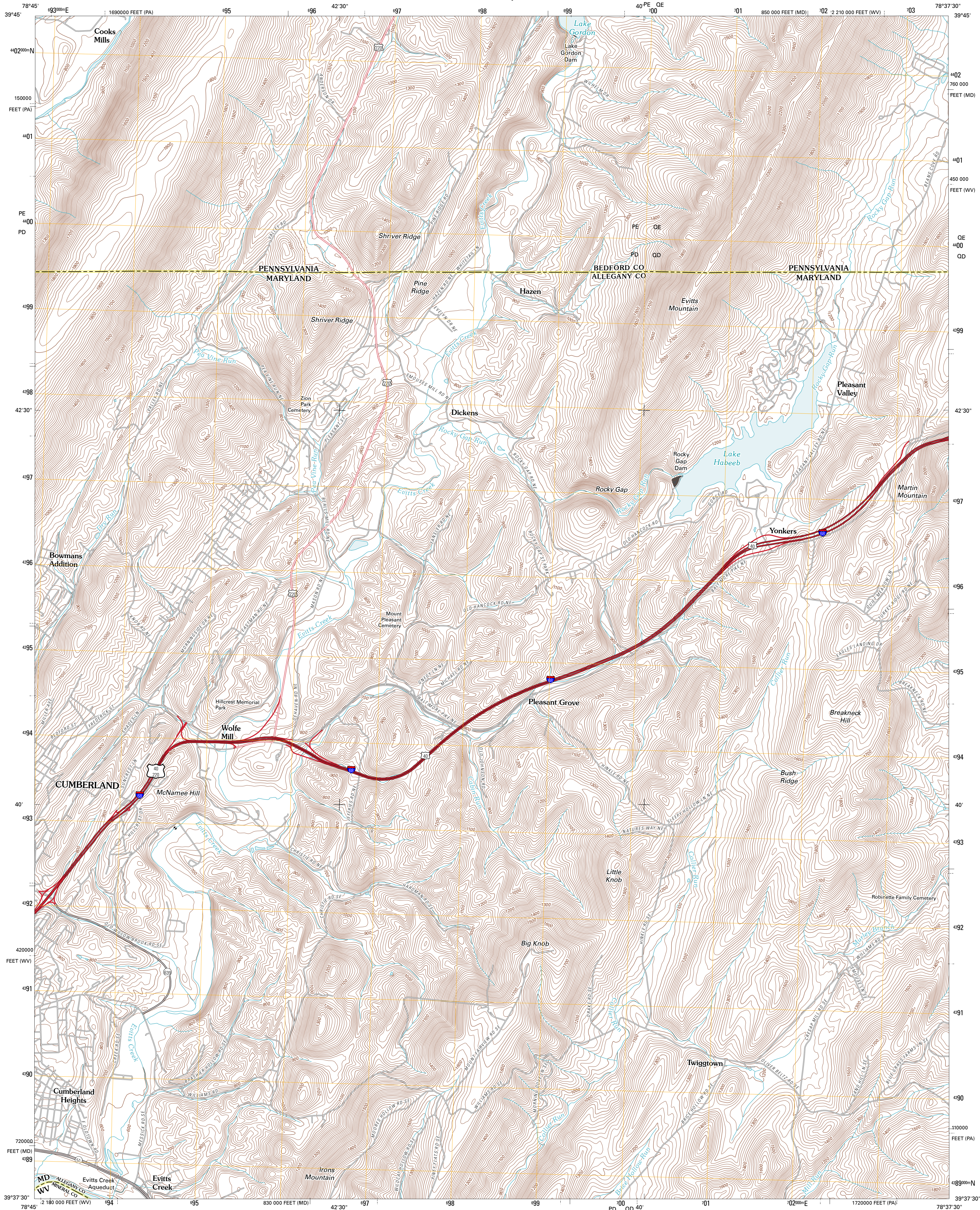




U.S. DEPARTMENT OF THE INTERIOR  
U. S. GEOLOGICAL SURVEY



EVITTS CREEK QUADRANGLE  
MARYLAND-PENNSYLVANIA-WEST VIRGINIA  
7.5-MINUTE SERIES

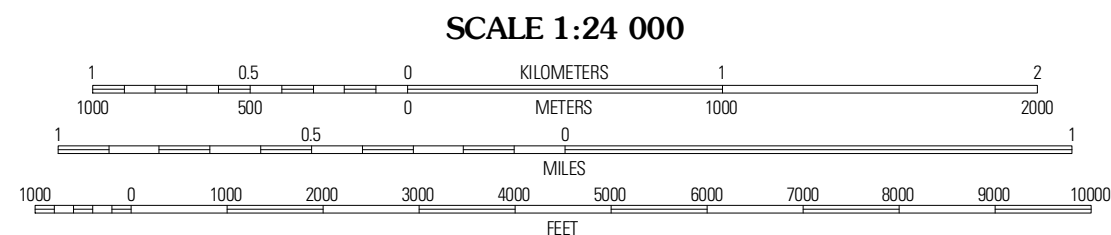


Produced by the United States Geological Survey  
North American Datum of 1983 (NAD83)  
World Geodetic System of 1984 (WGS84). Projection and  
1 000-meter grid: Universal Transverse Mercator, Zone 17S  
10 000-foot ticks: Maryland Coordinate System of 1983,  
Pennsylvania Coordinate System of 1983 (south zone), West  
Virginia Coordinate System of 1983 (north zone)

Imagery.....NAIP, July 2009 - October 2009  
Roads.....©2006-2010 Tele Atlas  
Names.....GNIS, 2010  
Hydrography.....National Hydrography Dataset, 2009  
Contours.....National Elevation Dataset, 2000  
Boundaries.....Census, IBWC, BIC, USGS, 1972 - 2010

UTM GRID AND 2011 MAGNETIC NORTH  
DECLINATION AT CENTER OF SHEET

U.S. National Grid
100,000-m Square ID
17S
PD 0E
PD 00
Grid Zone Designation
17S



CONTOUR INTERVAL 20 FEET  
NORTH AMERICAN VERTICAL DATUM OF 1988  
This map was produced to conform with version 0.5.10  
of the USGS US Topo Product Standard.  
A metadata file associated with this product is draft version 0.5.15



Fairhope	Hyndman	Beans Cove
Cumberland	Evitts Creek	Flintstone
Cresaptown	Patterson Creek	Oldtown

ROAD CLASSIFICATION  
Interstate Route  
US Route  
Ramp  
State Route  
Local Road  
4WD

EVITTS CREEK, MD-PA-WV  
2011