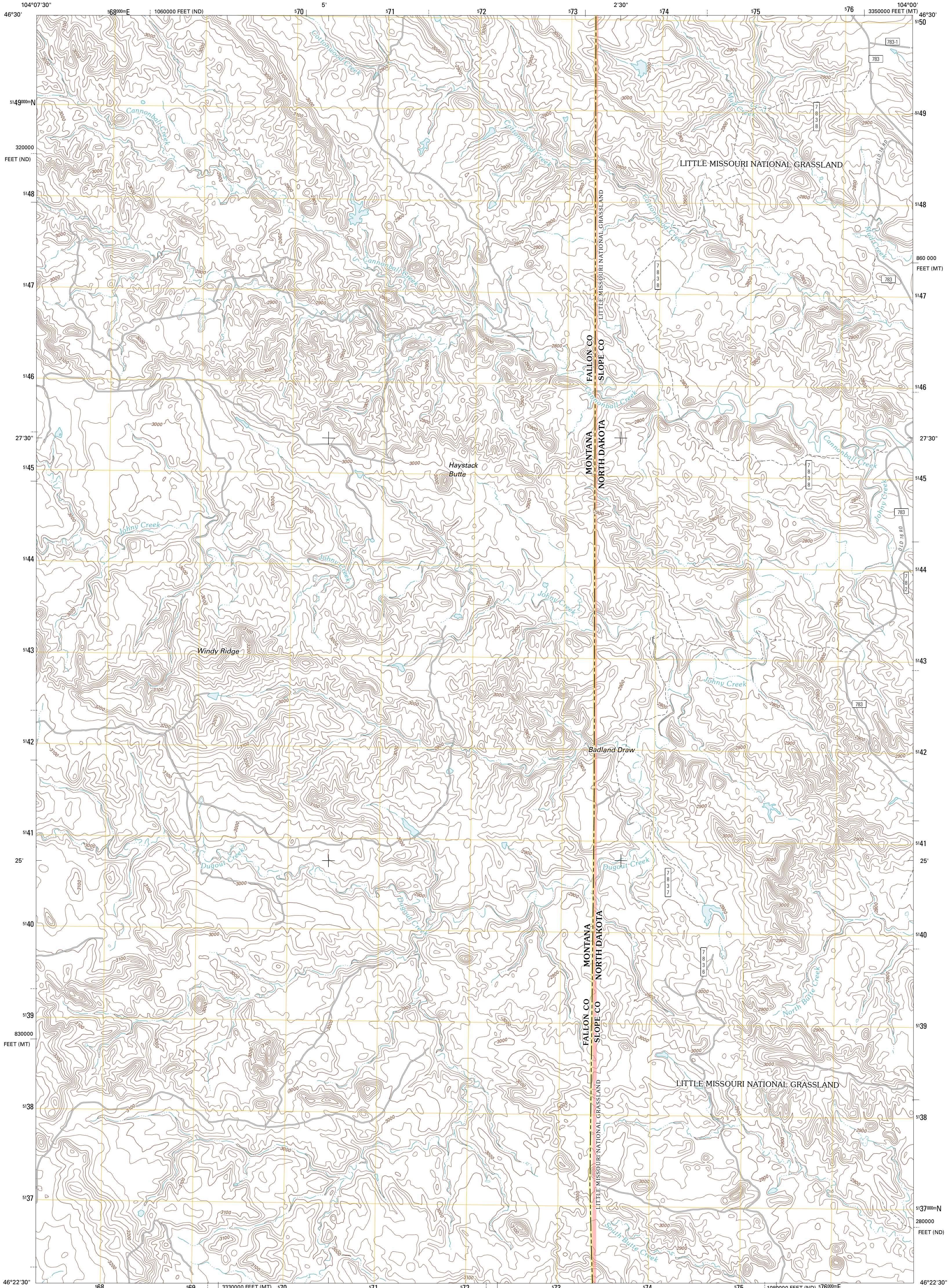




U.S. DEPARTMENT OF THE INTERIOR
U. S. GEOLOGICAL SURVEY

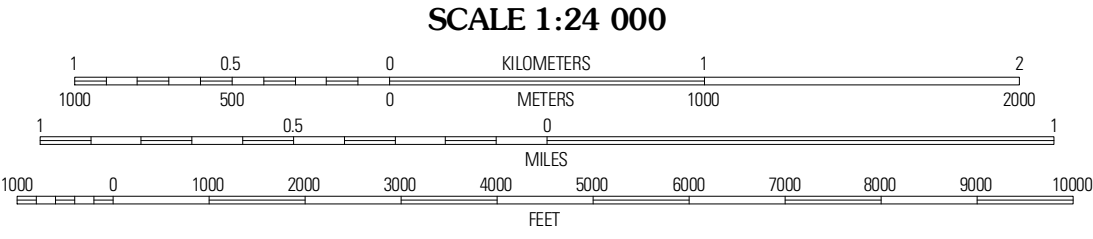
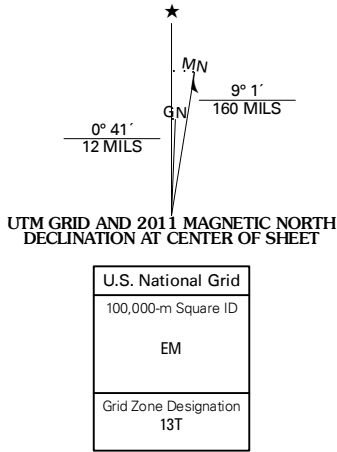


BADLAND DRAW QUADRANGLE
MONTANA-NORTH DAKOTA
7.5-MINUTE SERIES

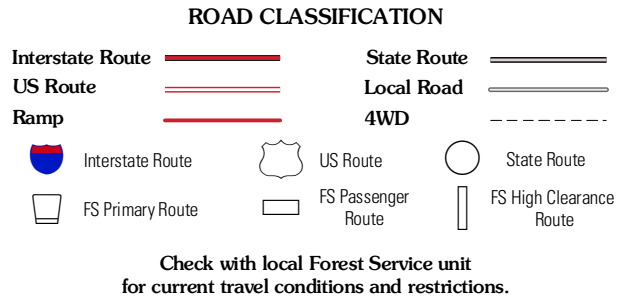
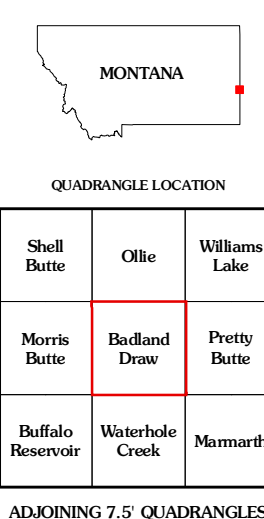


Produced by the United States Geological Survey
North American Datum of 1983 (NAD83)
World Geodetic System of 1984 (WGS84). Projection and
1 000-meter grid: Universal Transverse Mercator, Zone 13T
10 000-foot ticks: Montana Coordinate System of 1983,
North Dakota Coordinate System of 1983 (south zone)

Imagery.....NAIP, August 2009
Roads.....©2006-2010 Tele Atlas
Roads within US Forest Service Lands.....FS Topo Data
with limited Forest Service updates, 2009
Names.....©2006-2010 Tele Atlas
Hydrography.....National Hydrography Dataset, 2009
Contours.....National Elevation Dataset, 2005
Boundaries.....Census, IBWC, IBC, USGS, 1972 - 2010



CONTOUR INTERVAL 20 FEET
NORTH AMERICAN VERTICAL DATUM OF 1988
This map was produced to conform with version 0.5.10
of the USGS US Topo Product Standard.
A metadata file associated with this product is draft version 0.5.16



BADLAND DRAW, MT-ND
2011