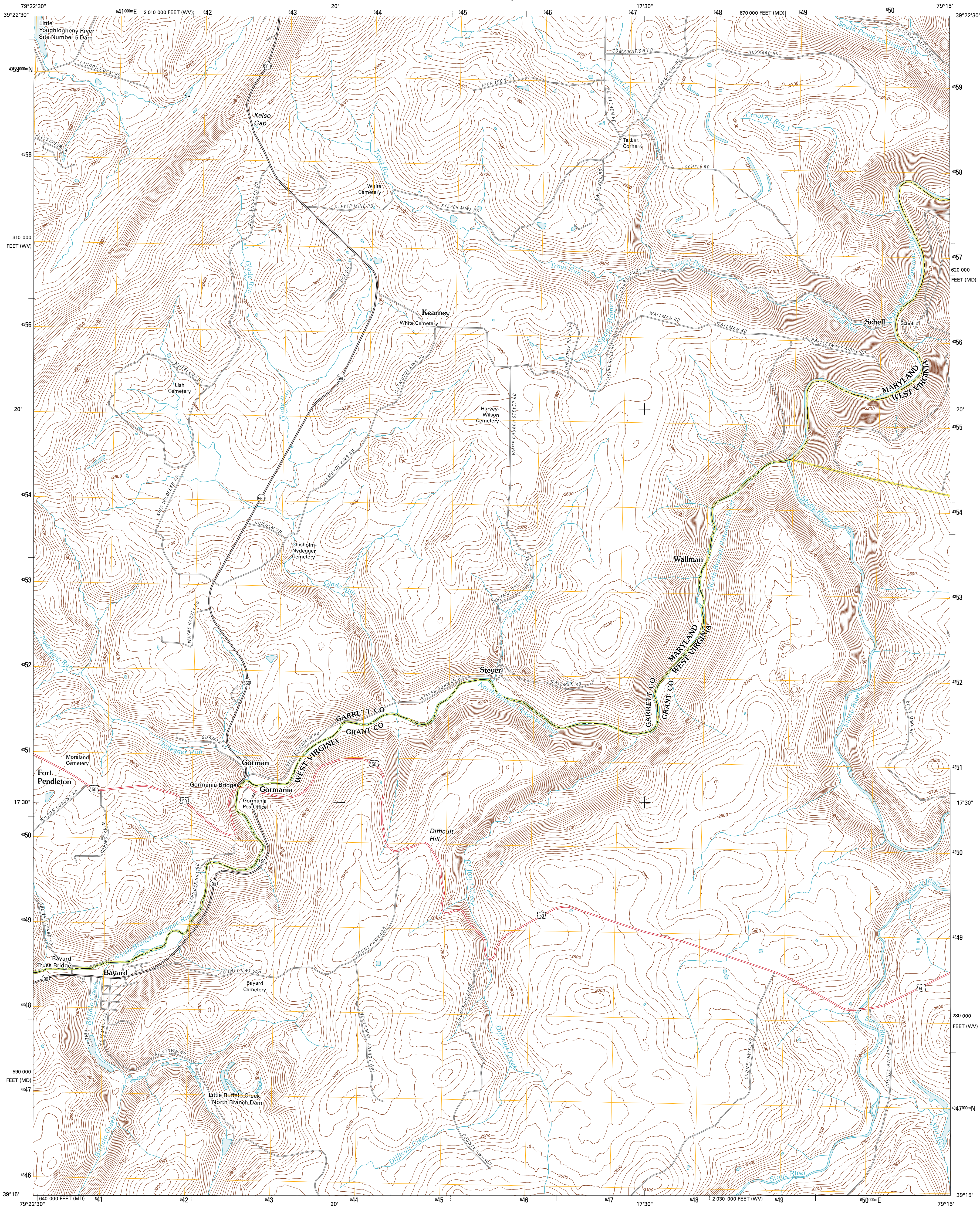




U.S. DEPARTMENT OF THE INTERIOR
U. S. GEOLOGICAL SURVEY

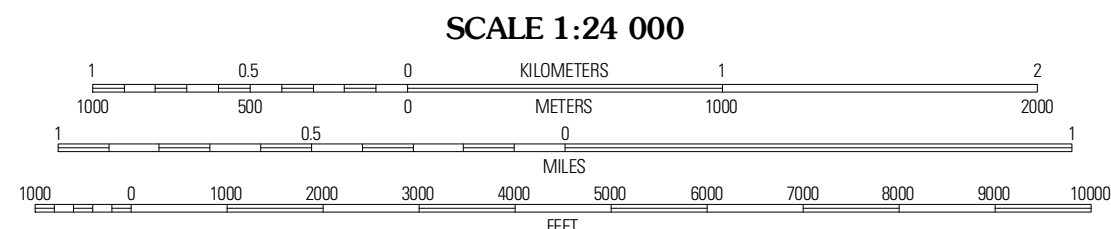
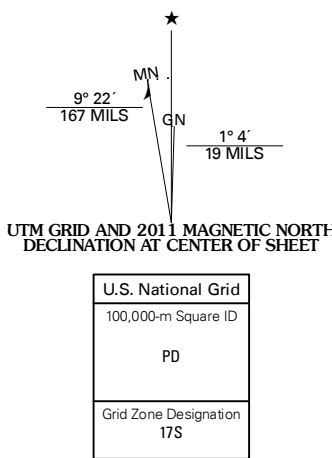


GORMAN QUADRANGLE
MARYLAND-WEST VIRGINIA
7.5-MINUTE SERIES



Produced by the United States Geological Survey
North American Datum of 1983 (NAD83)
World Geodetic System of 1984 (WGS84) Projection and
1 000-meter grid: Universal Transverse Mercator, Zone 17S
10 000-foot ticks: Maryland Coordinate System of 1983,
West Virginia Coordinate System of 1983 (north zone)

Imagery.....NAIP, June 2009
Roads.....©2006-2010 Tele Atlas
Names.....©2006-2010 Tele Atlas
Hydrography.....National Hydrography Dataset, 2009
Contours.....National Elevation Dataset, 2006
Boundaries.....Census, IBWC, IBC, USGS, 1972 - 2010

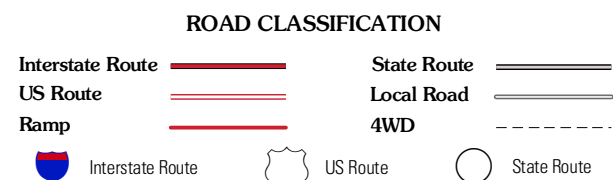


CONTOUR INTERVAL 20 FEET
NORTH AMERICAN VERTICAL DATUM OF 1988
This map was produced to conform with version 0.5.10
of the USGS US Topo Product Standard.
A metadata file associated with this product is draft version 0.5.15



Oakland	Deer Park	Ritzmiller
Table Rock	Gorman	Mount Storm
Duffs	Mount Storm Lake	Greenland Gap

ADJOINING 7.5' QUADRANGLES



GORMAN, MD-WV
2011