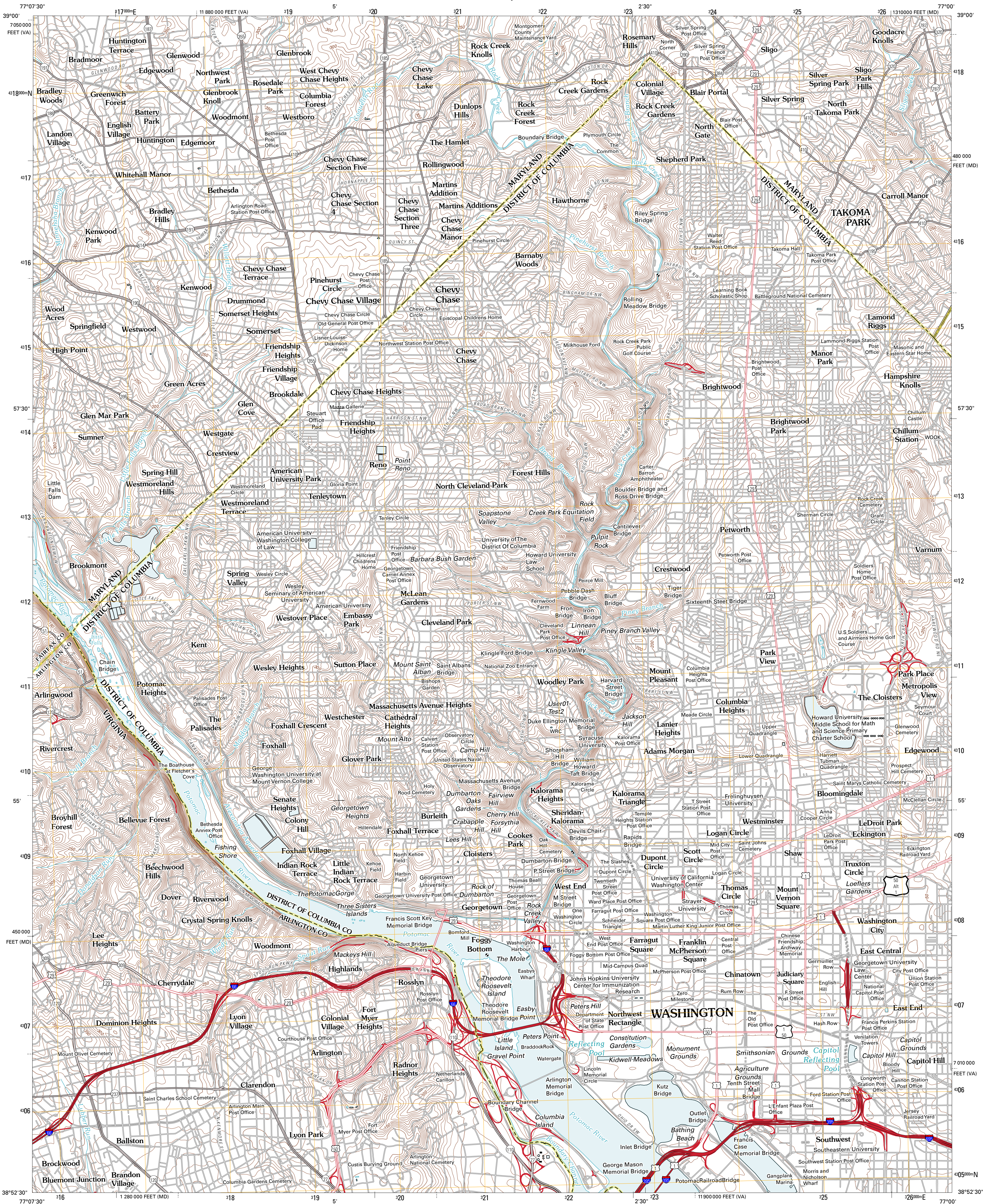




U.S. DEPARTMENT OF THE INTERIOR
U. S. GEOLOGICAL SURVEY

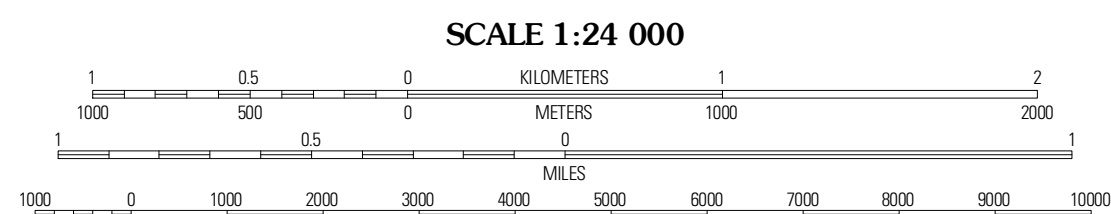
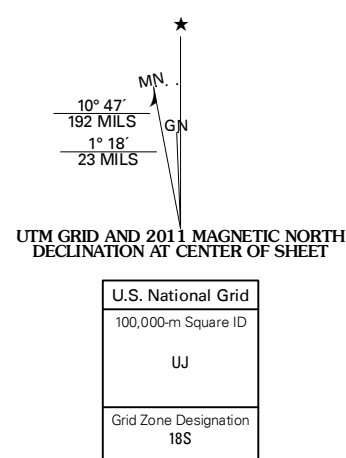


WASHINGTON WEST QUADRANGLE
DISTRICT OF COLUMBIA-MARYLAND-VIRGINIA
7.5-MINUTE SERIES

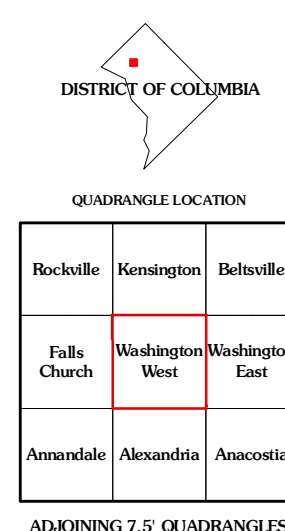


Produced by the United States Geological Survey
North American Datum of 1983 (NAD83)
World Geodetic System of 1984 (WGS84), Projection
1 000-meter grid Universal Transverse Mercator, Zone 18S
10 000-foot ticks: Maryland Coordinate System of 1983,
Virginia Coordinate System of 1983 (north zone)

Imagery:.....NAP, June 2009
Names:.....©2006-2010 Tide Atlas
Names:.....GNS, 2010
Hydrography:.....National Hydrography Dataset, 2009
Contours:.....National Elevation Dataset, 2008
Boundaries:.....Census, IBWC, IBC, USGS, 1972 - 2010



CONTOUR INTERVAL 10 FEET
NORTH AMERICAN VERTICAL DATUM OF 1988
This map was produced to conform with version 0.5.10
of the USGS US Topo Product Standard.
A metadata file associated with this product is draft version 0.5.15



WASHINGTON WEST, DC-MD-VA
2011