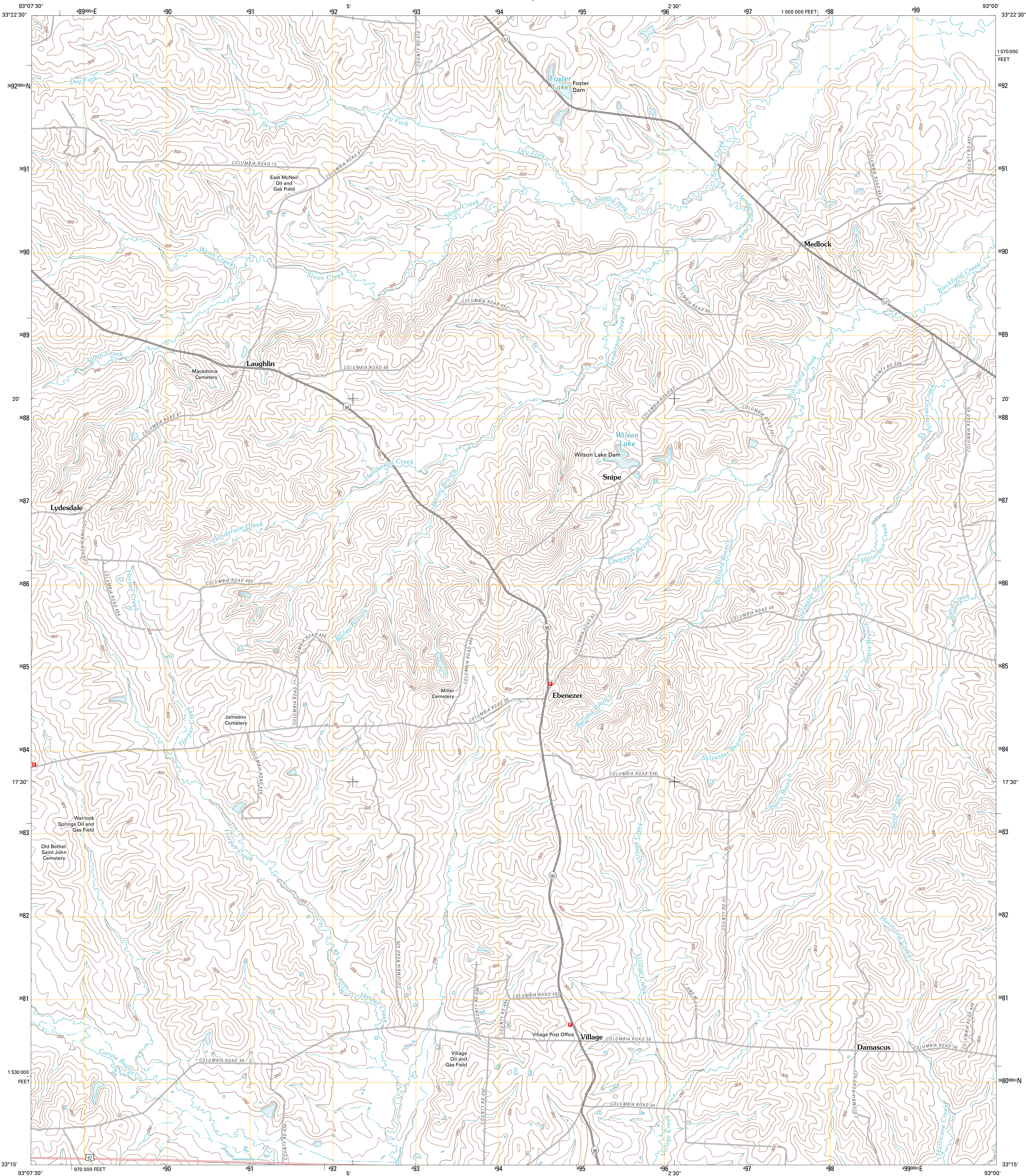




U.S. DEPARTMENT OF THE INTERIOR  
U. S. GEOLOGICAL SURVEY

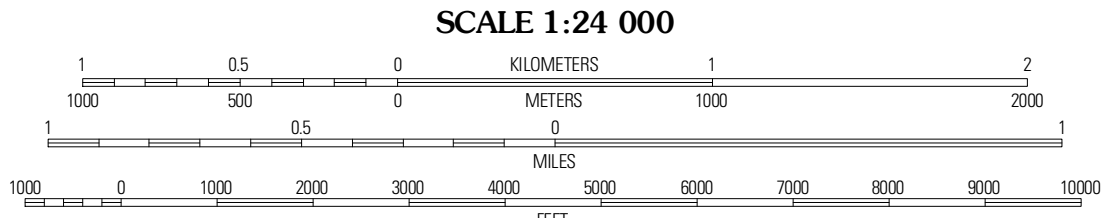
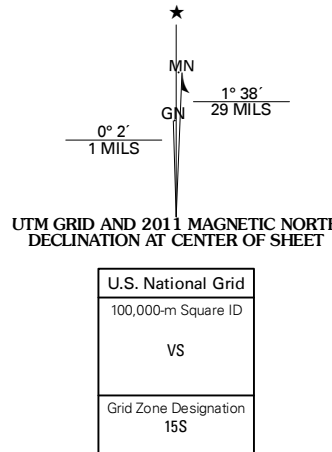


VILLAGE QUADRANGLE  
ARKANSAS-COLUMBIA CO.  
7.5-MINUTE SERIES



Produced by the United States Geological Survey  
North American Datum of 1983 (NAD83)  
World Geodetic System of 1984 (WGS84), Projection and  
10 000-foot ticks: Arkansas Coordinate System of 1983  
(south zone)

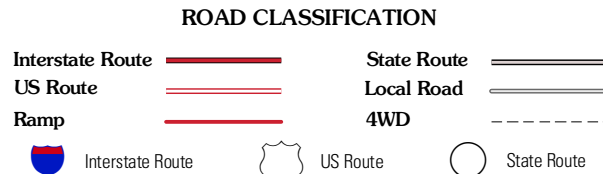
Imagery.....NAP, September 2009  
Roads.....62006-2010 Tele Atlas  
Names.....GNIS, 2010  
Hydrography.....National Hydrography Dataset, 2009  
Contours.....National Elevation Dataset, 2009  
Boundaries.....Census, IBWC, IBC, USGS, 1972 - 2010



CONTOUR INTERVAL 10 FEET  
NORTH AMERICAN VERTICAL DATUM OF 1988  
This map was produced to conform with version 0.5.10  
of the USGS US Topo Product Standard.  
A metadata file associated with this product is draft version 0.5.16



Magnolia NW	Stephens	Buena Vista
Magnolia	Village	Mount Holly
Calhoun	Spotville	Maryville



VILLAGE, AR  
2011