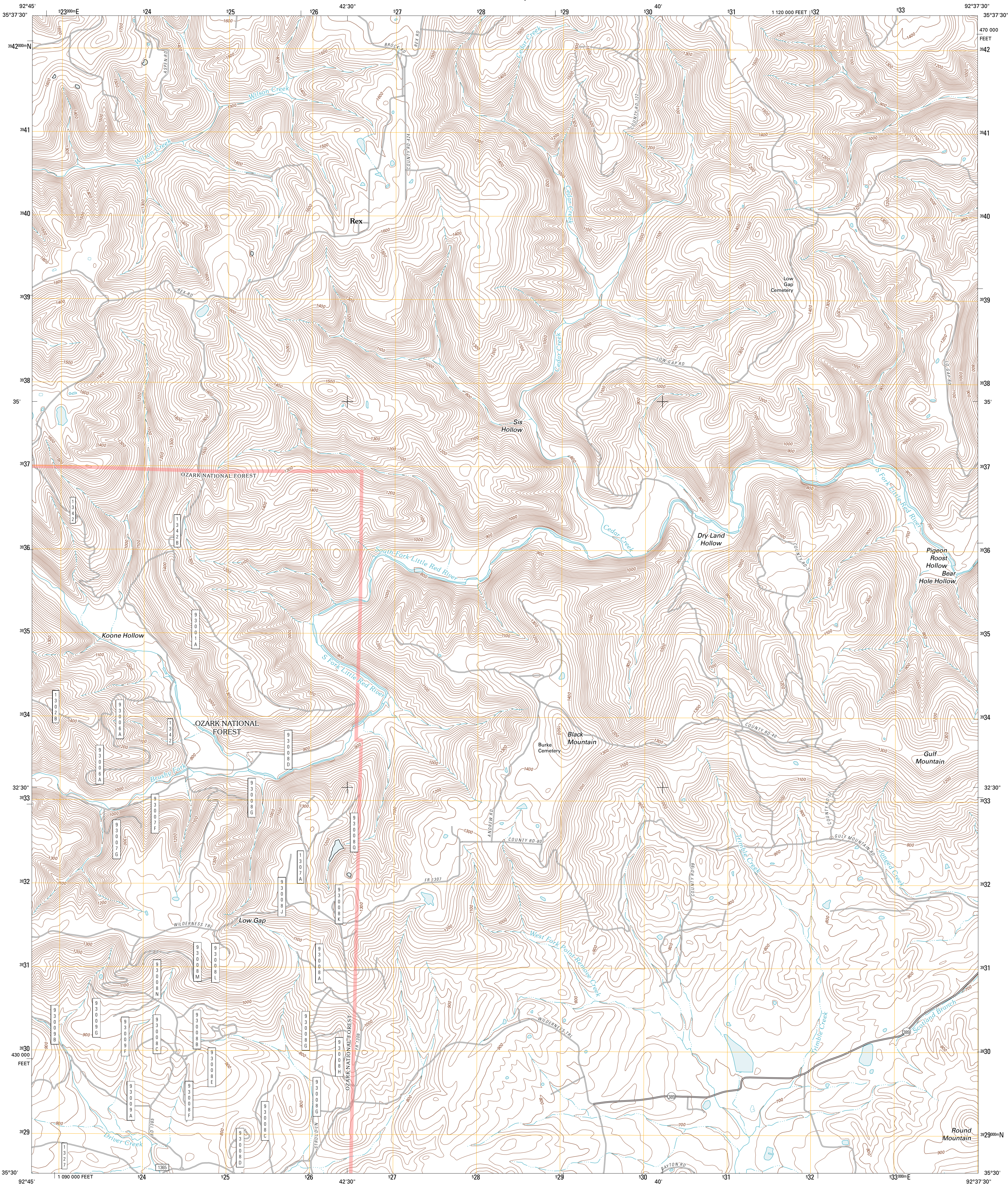




U.S. DEPARTMENT OF THE INTERIOR
U. S. GEOLOGICAL SURVEY



REX QUADRANGLE
ARKANSAS-VAN BUREN CO.
7.5-MINUTE SERIES

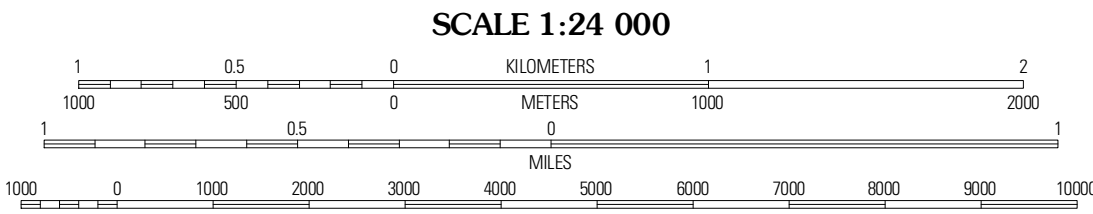


Produced by the United States Geological Survey
North American Datum of 1983 (NAD83)
World Geodetic System of 1984 (WGS84). Projection and
1 000-meter grid: Universal Transverse Mercator, Zone 15S
10 000-foot ticks: Arkansas Coordinate System of 1983
(north zone)

Imagery:.....NAIP, September 2009
Roads:.....©2006-2010 Tele Atlas
Roads within US Forest Service Lands:.....FSTopo Data
with limited Forest Service updates, 2009
Names:.....GNIS, 2010
Hydrography:.....National Hydrography Dataset, 2009
Contours:.....National Elevation Dataset, 2000
Boundaries:.....Census, 1990; IBC, USGS, 1972-2010

UTM GRID AND 2011 MAGNETIC NORTH
DECLINATION AT CENTER OF SHEET

U.S. National Grid
100,000-m Square ID
WV
Grid Zone Designation
15S



CONTOUR INTERVAL 20 FEET
NORTH AMERICAN VERTICAL DATUM OF 1988
This map was produced to conform with version 0.5.10
of the USGS US Topo Product Standard.
A metadata file associated with this product is draft version 0.5.16



QUADRANGLE LOCATION		
Tilly	Abbe	Boltonburg
Lost Corner	Rex	Scotland
Jerusalem	Cleveland	Formosa

ROAD CLASSIFICATION

Interstate Route
US Route
Ramp
FS Primary Route

State Route
Local Road
4WD
US Route
FS Passenger Route
FS High Clearance Route

Check with local Forest Service unit
for current travel conditions and restrictions.

REX, AR
2011

ADJOINING 7.5' QUADRANGLES