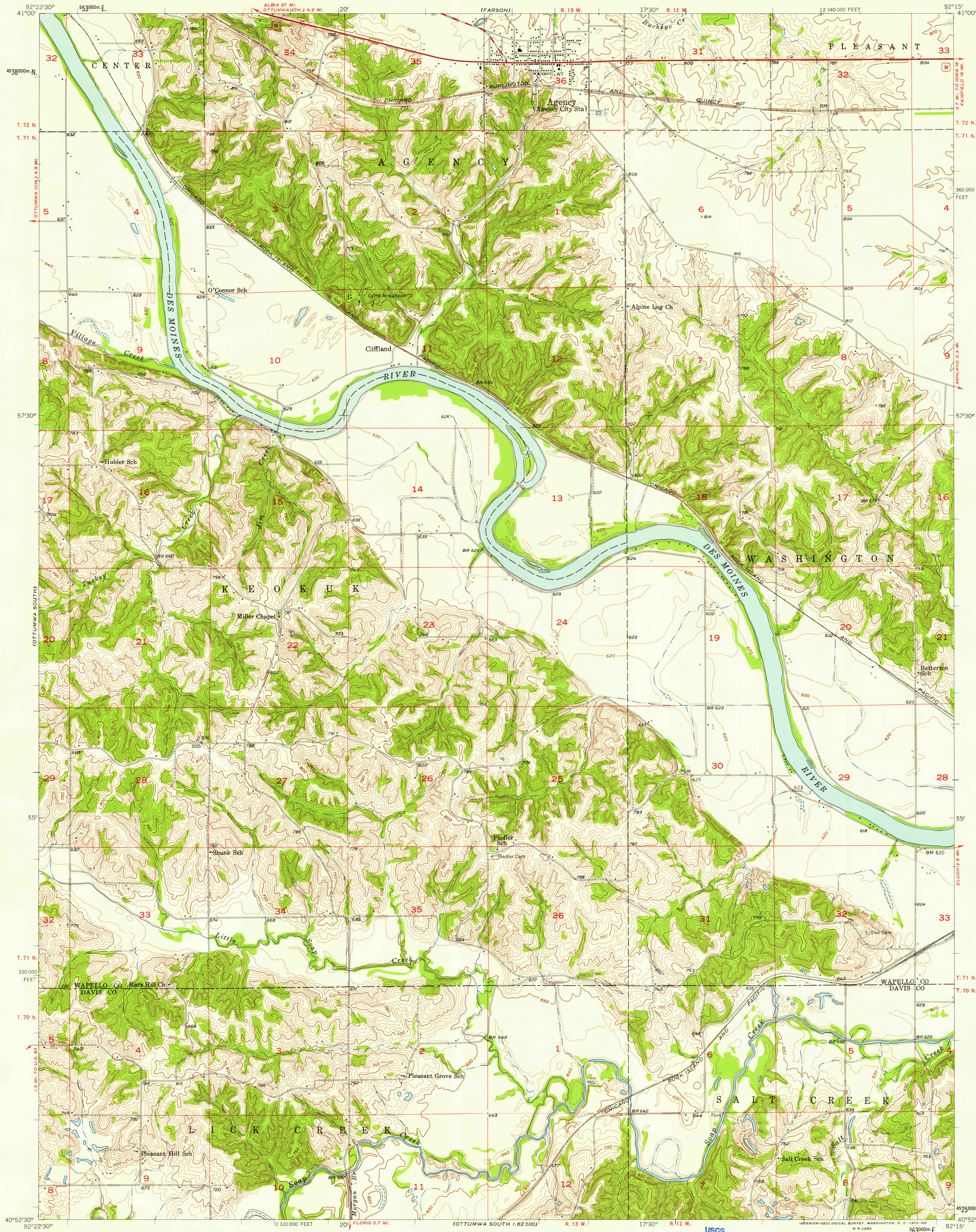
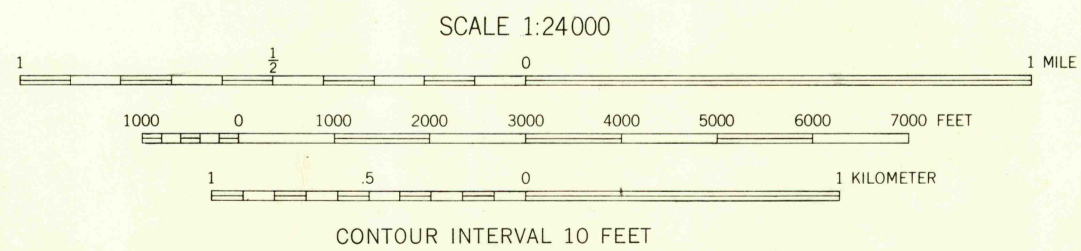


UNITED STATES  
DEPARTMENT OF THE INTERIOR  
GEOLOGICAL SURVEY

AGENCY QUADRANGLE  
IOWA  
7.5 MINUTE SERIES (TOPOGRAPHIC)  
NE/4 OTTUMWA SOUTH 15' QUADRANGLE



Mapped, edited, and published by the Geological Survey  
Control by USGS and USC&GS  
Topography from aerial photographs by photogrammetric methods  
Aerial photographs taken 1955. Field check 1956  
Polyconic projection, 1927 North American datum  
10,000-foot grid based on Iowa coordinate system, south zone  
1000-meter Universal Transverse Mercator grid ticks,  
zone 15, shown in blue



USGS  
Historical File  
Topographic Division

ROAD CLASSIFICATION  
Heavy-duty ——— Light-duty ———  
Medium-duty ——— Unimproved dirt ———  
U. S. Route

AGENCY, IOWA  
NE/4 OTTUMWA SOUTH 15' QUADRANGLE  
N 4052.5—W 9215/7.5

1956

U.S.G.S.  
FILE COPY  
TOPOGRAPHIC

JUN 27 1956