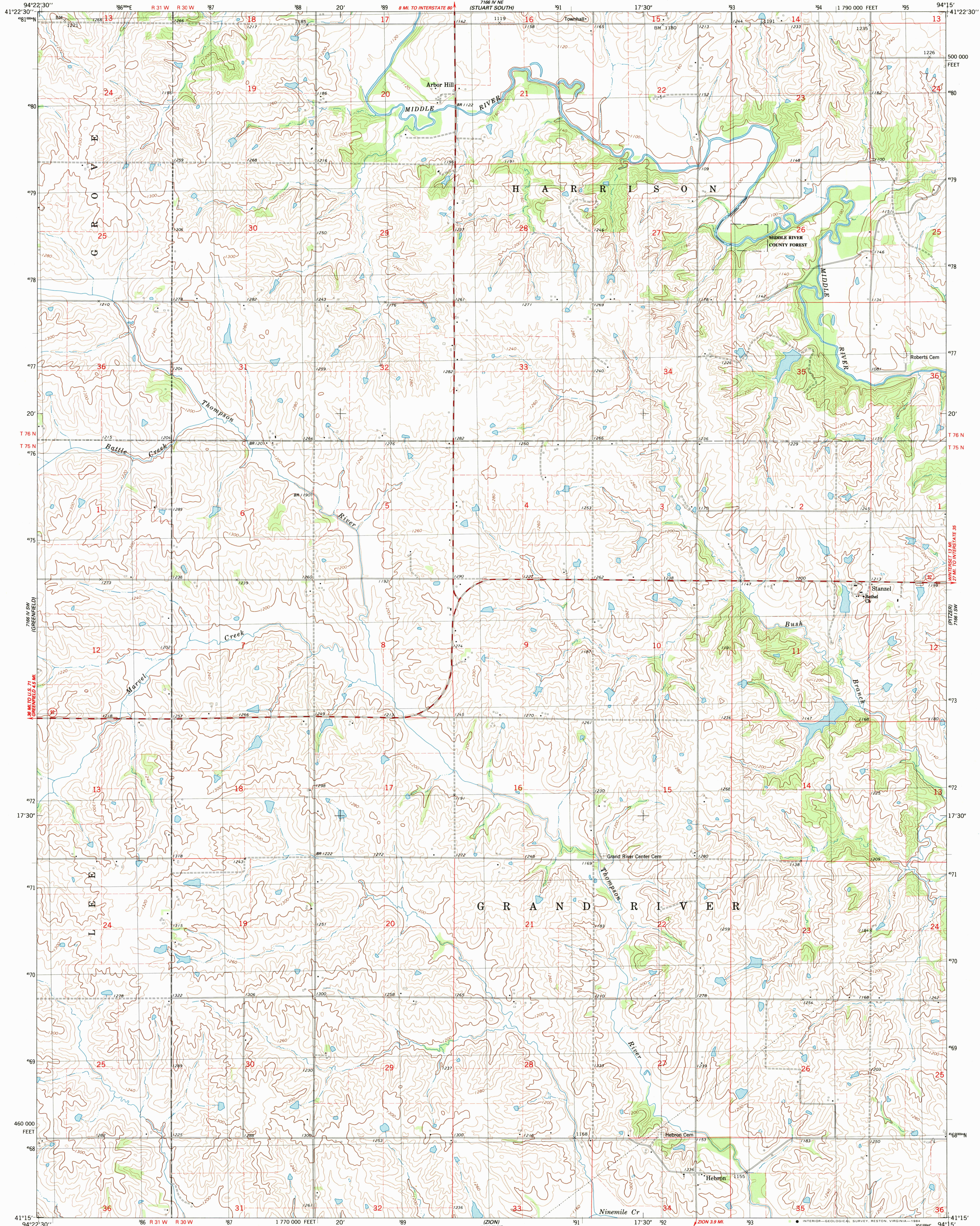


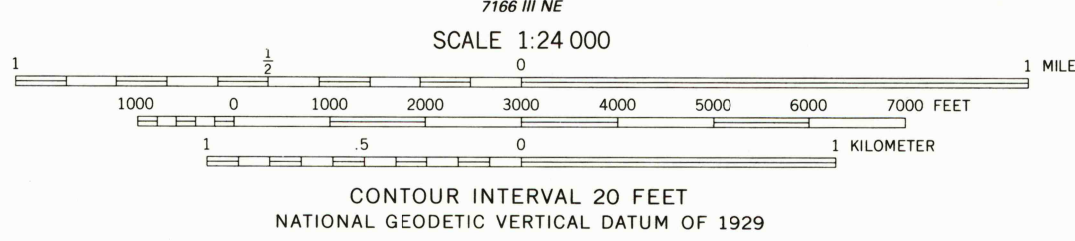
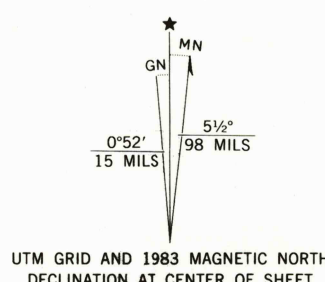
UNITED STATES  
DEPARTMENT OF THE INTERIOR  
GEOLOGICAL SURVEY

STATE OF IOWA  
IOWA GEOLOGICAL SURVEY

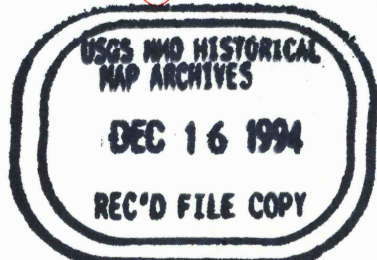
ARBOR HILL QUADRANGLE  
IOWA-ADAIR CO.  
7.5 MINUTE SERIES (TOPOGRAPHIC)  
SE/4 GREENFIELD 15' QUADRANGLE  
1 790 000 FEET



Mapped, edited, and published by the Geological Survey  
in cooperation with the Iowa Geological Survey  
Control by USGS and NOS/NOAA  
Topography by photogrammetric methods from aerial photographs  
taken 1981. Field checked 1982. Map edited 1983  
Projection and 10,000-foot grid ticks: Iowa coordinate  
system, south zone (Lambert conformal conic)  
1000-meter Universal Transverse Mercator grid, zone 15  
1927 North American Datum  
To place on the predicted North American Datum 1983,  
move the projection lines 4 meters north and  
20 meters east as shown by dashed corner ticks  
Fine red dashed lines indicate selected fence and field lines where  
generally visible on aerial photographs. This information is unchecked



ROAD CLASSIFICATION	
Primary highway, hard surface	Light-duty road, hard or improved surface
Secondary highway, hard surface	Unimproved road
Interstate Route	U. S. Route
	State Route



ARBOR HILL, IOWA  
SE/4 GREENFIELD 15' QUADRANGLE  
N4115-W9415/7.5  
1983  
DMA 7166 IV SE-SERIES V876

THIS MAP COMPLIES WITH NATIONAL MAP ACCURACY STANDARDS  
FOR SALE BY U. S. GEOLOGICAL SURVEY, DENVER, COLORADO 80225, OR RESTON, VIRGINIA 22092  
AND IOWA GEOLOGICAL SURVEY, IOWA CITY, IOWA 52240  
A FOLDER DESCRIBING TOPOGRAPHIC MAPS AND SYMBOLS IS AVAILABLE ON REQUEST