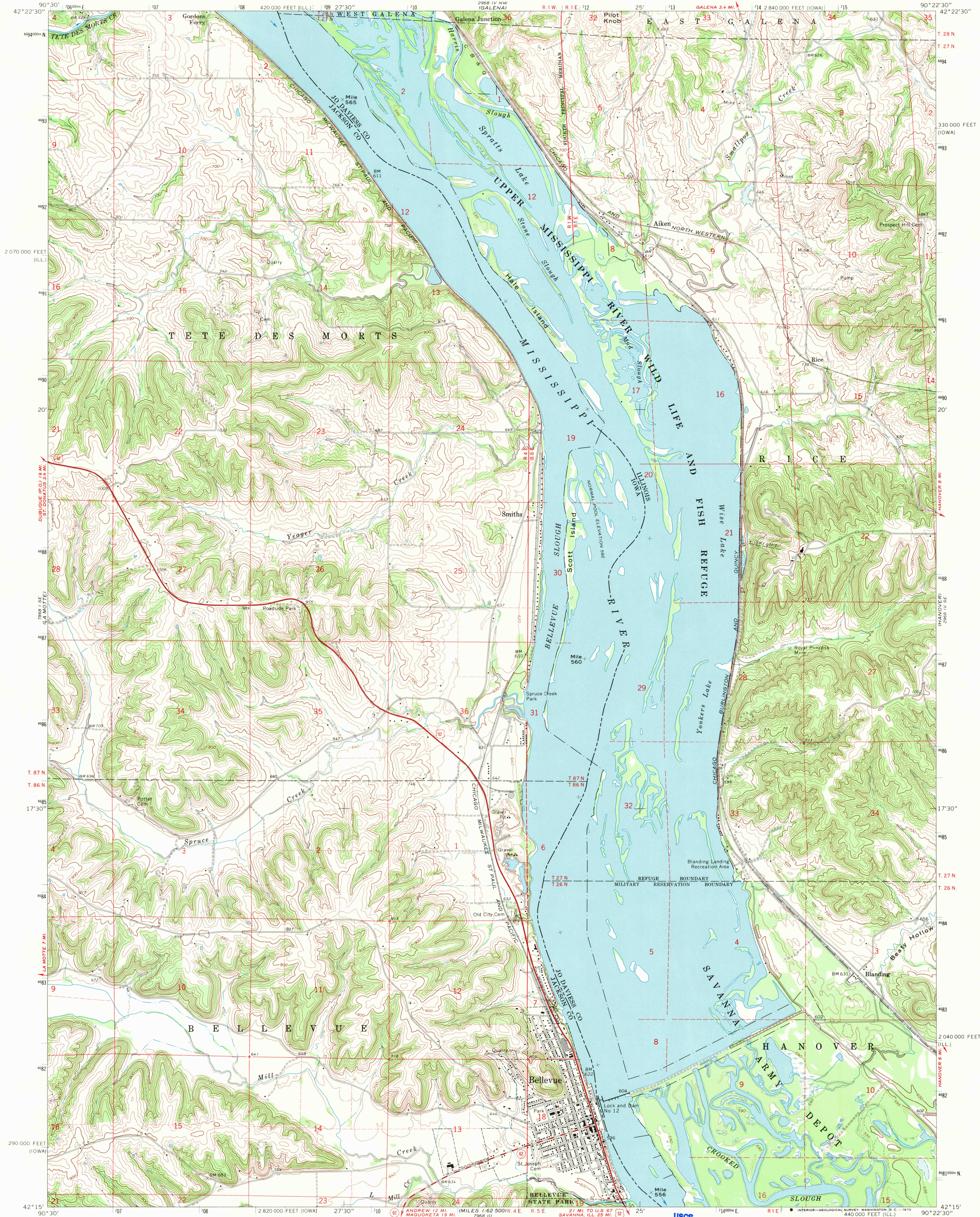


UNITED STATES
DEPARTMENT OF THE INTERIOR
GEOLOGICAL SURVEY

BELLEVUE QUADRANGLE
IOWA-ILLINOIS
7.5 MINUTE SERIES (TOPOGRAPHIC)
SW/4 GALENA 15' QUADRANGLE

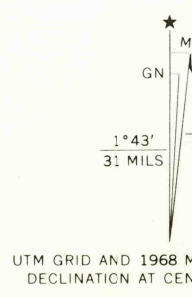


Mapped, edited, and published by the Geological Survey
Control by USGS and USC&GS

Topography by photogrammetric methods from aerial
photographs taken 1966 and planetable surveys 1968

Polyconic projection. 1927 North American datum
10,000-foot grids based on Iowa coordinate system, north zone
and Illinois coordinate system, west zone
1000-meter Universal Transverse Mercator grid ticks,
zone 15, shown in blue

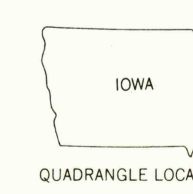
Fine red dashed lines indicate selected fence and field lines where
generally visible on aerial photographs. This information is unchecked



SCALE 1:24,000
(MILES 1:62,500 OR 4 E. R. S. E. 21 MI. TO U.S. 67 SAVANNA, ILL. 25 MI.)

CONTOUR INTERVAL 20 FEET
DOTTED LINES REPRESENT 5-FOOT CONTOURS
DATUM IS MEAN SEA LEVEL

THIS MAP COMPLIES WITH NATIONAL MAP ACCURACY STANDARDS
FOR SALE BY U.S. GEOLOGICAL SURVEY, DENVER, COLORADO 80225 OR WASHINGTON, D.C. 20242,
IOWA GEOLOGICAL SURVEY, IOWA CITY, IOWA 52240,
AND STATE GEOLOGICAL SURVEY, URBANA, ILLINOIS 61801
A FOLDER DESCRIBING TOPOGRAPHIC MAPS AND SYMBOLS IS AVAILABLE ON REQUEST



ROAD CLASSIFICATION
Primary highway, all weather, hard surface
Secondary highway, all weather, hard surface
Light-duty road, all weather, improved surface
Unimproved road, fair or dry weather

U.S. Route
State Route

U.S.G.S.
FILE COPY
TOPOGRAPHIC DIVISION

BELLEVUE, IOWA-ILL.
SW/4 GALENA 15' QUADRANGLE
N4215-W9022.5/7.5

1968
AMS 2968 IV SW-SERIES V863

2 270

2880