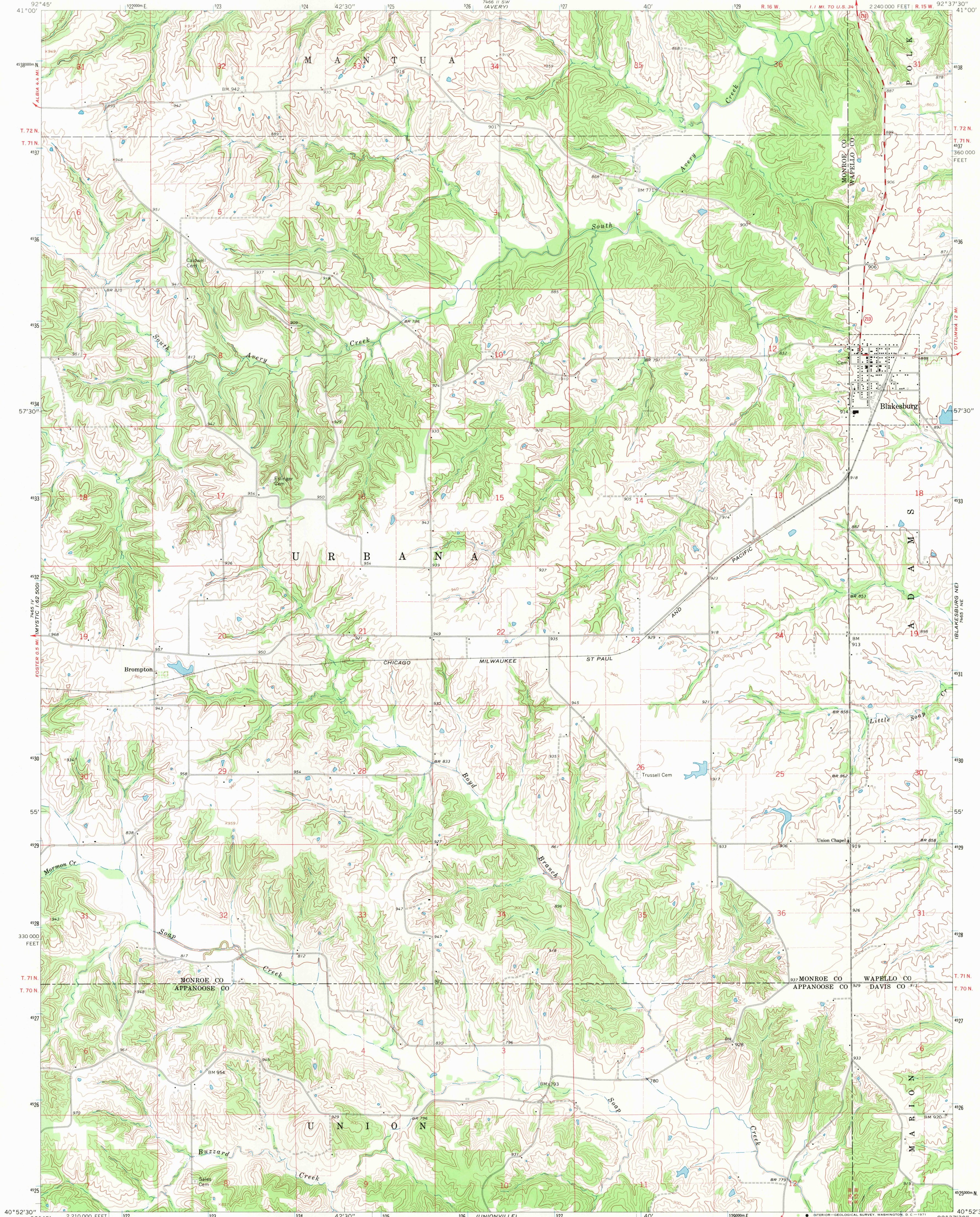


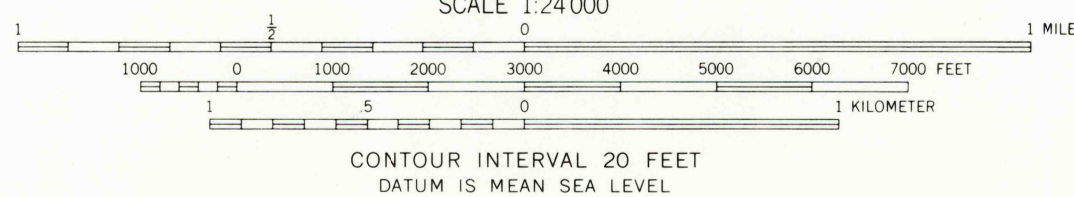
UNITED STATES
DEPARTMENT OF THE INTERIOR
GEOLOGICAL SURVEY

BLAKESBURG QUADRANGLE
IOWA
7.5 MINUTE SERIES (TOPOGRAPHIC)



Mapped, edited, and published by the Geological Survey
Control by USGS and USC&GS
Topography by photogrammetric methods from aerial
photographs taken 1964. Field checked 1968.
Polyconic projection. 1927 North American datum.
10,000-foot grid based on Iowa coordinate system, south zone
1000-meter Universal Transverse Mercator grid ticks,
zone 15, shown in blue.
Fine red dashed lines indicate selected fence and field lines where
generally visible on aerial photographs. This information is unchecked.

UTM GRID AND 1968 MAGNETIC NORTH
DECLINATION AT CENTER OF SHEET



USGS
Historical File
Topographic Division



ROAD CLASSIFICATION
Secondary highway, all weather, Light-duty road, all weather,
hard surface
Unimproved road, fair or dry
weather
State Route

THIS MAP COMPLIES WITH NATIONAL MAP ACCURACY STANDARDS
FOR SALE BY U.S. GEOLOGICAL SURVEY, DENVER, COLORADO 80225, OR WASHINGTON, D.C. 20242
AND BY THE IOWA GEOLOGICAL SURVEY, IOWA CITY, IOWA 52240
A FOLDER DESCRIBING TOPOGRAPHIC MAPS AND SYMBOLS IS AVAILABLE ON REQUEST

BLAKESBURG, IOWA
N4052.5-W9237.5/7.5
1968
AMS 7465 1 NW-SERIES V876

APR 9 1971
2200
U.S.G.S.
FILE COPY
TOPOGRAPHIC DIVISION