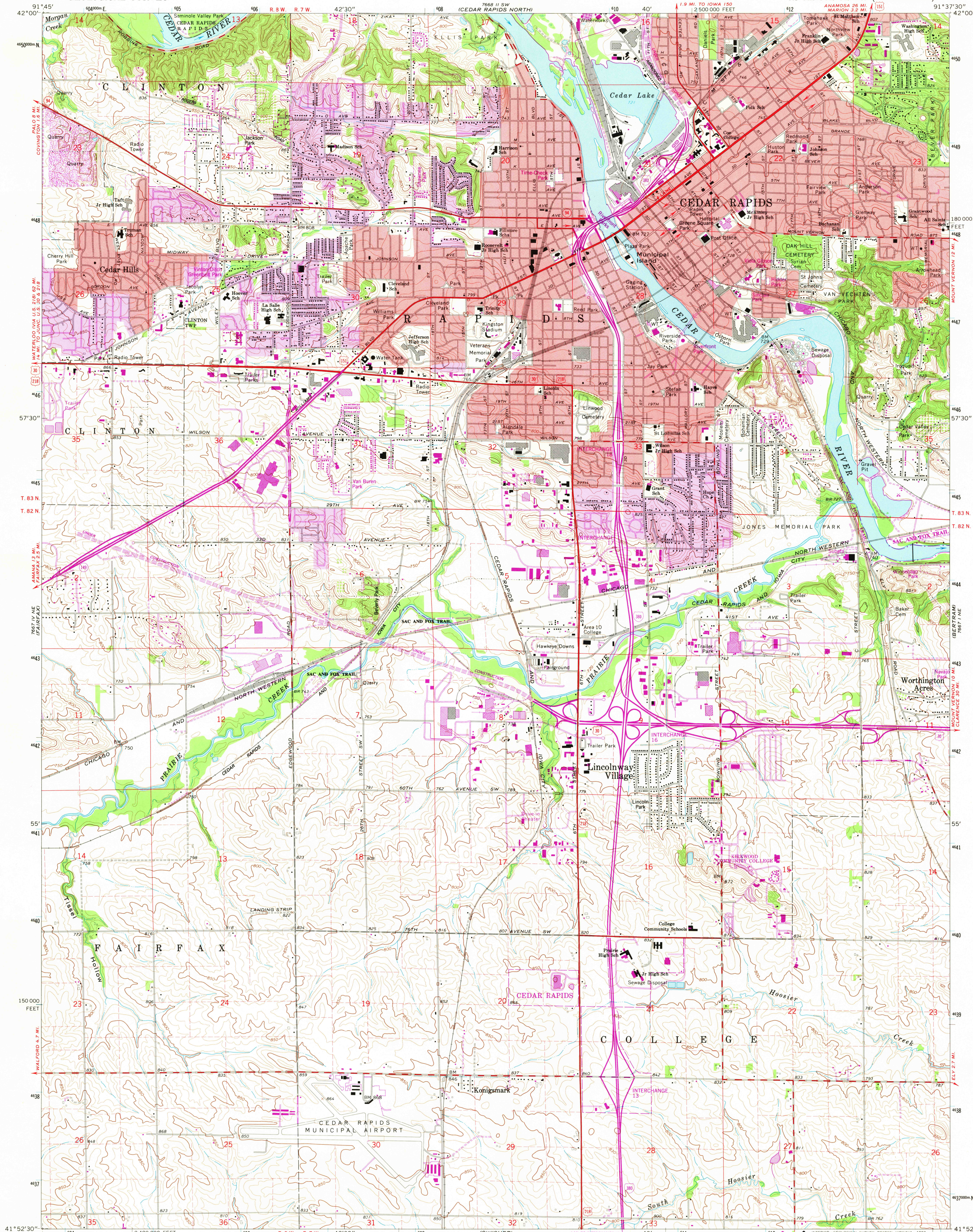


UNITED STATES
DEPARTMENT OF THE INTERIOR
GEOLOGICAL SURVEY

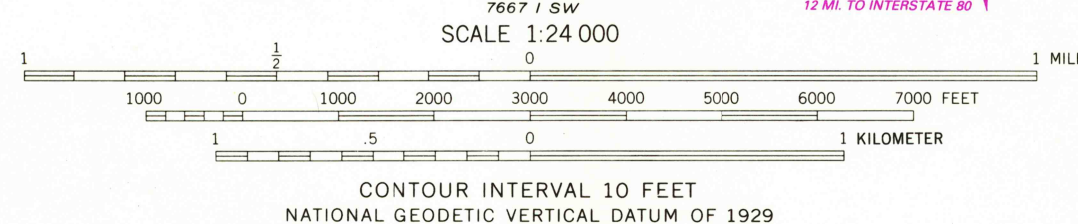
STATE OF IOWA
IOWA GEOLOGICAL SURVEY

CEDAR RAPIDS SOUTH QUADRANGLE
IOWA—LINN CO.
7.5 MINUTE SERIES (TOPOGRAPHIC)



Mapped, edited, and published by the Geological Survey
Control by USGS and NOS/NOAA
Topography by photogrammetric methods from aerial photographs
taken 1965. Field checked 1967
Polyconic projection. 10,000-foot grid ticks based on Iowa
coordinate system, north zone. 1000-meter Universal Transverse
Mercator grid ticks, zone 15, shown in blue. 1927 North
American Datum. To place on the predicted North American
Datum 1983 move the projection lines 3 meters north and
14 meters east as shown by dashed corner ticks
Fine red dashed lines indicate selected fence and field lines where
generally visible on aerial photographs. This information is updated
Red tint indicates area in which only landmark buildings are shown
There may be private inholdings within the boundaries of
the National or State reservations shown on this map

UTM GRID AND 1982 MAGNETIC NORTH
DECLINATION AT CENTER OF SHEET



THIS MAP COMPLIES WITH NATIONAL MAP ACCURACY STANDARDS
FOR SALE BY U. S. GEOLOGICAL SURVEY, DENVER, COLORADO 80225, OR RESTON, VIRGINIA 22092
AND BY THE IOWA GEOLOGICAL SURVEY, IOWA CITY, IOWA 52240
A FOLDER DESCRIBING TOPOGRAPHIC MAPS AND SYMBOLS IS AVAILABLE ON REQUEST



QUADRANGLE LOCATION

ROAD CLASSIFICATION
Heavy-duty ——— Light-duty ———
Medium-duty ——— Unimproved dirt ———
U. S. Route ——— State Route ———
Interstate Route ———

CEDAR RAPIDS SOUTH, IOWA
N4152.5—W9137.5/7.5
1967
PHOTOREVISED 1982
DMA 7667 I NW—SERIES V876

Revisions shown in purple and woodland compiled from
aerial photographs taken 1980 and other sources. This
information not field checked. Map edited 1982
Purple tint indicates extension of urban areas

SEP 20 1982