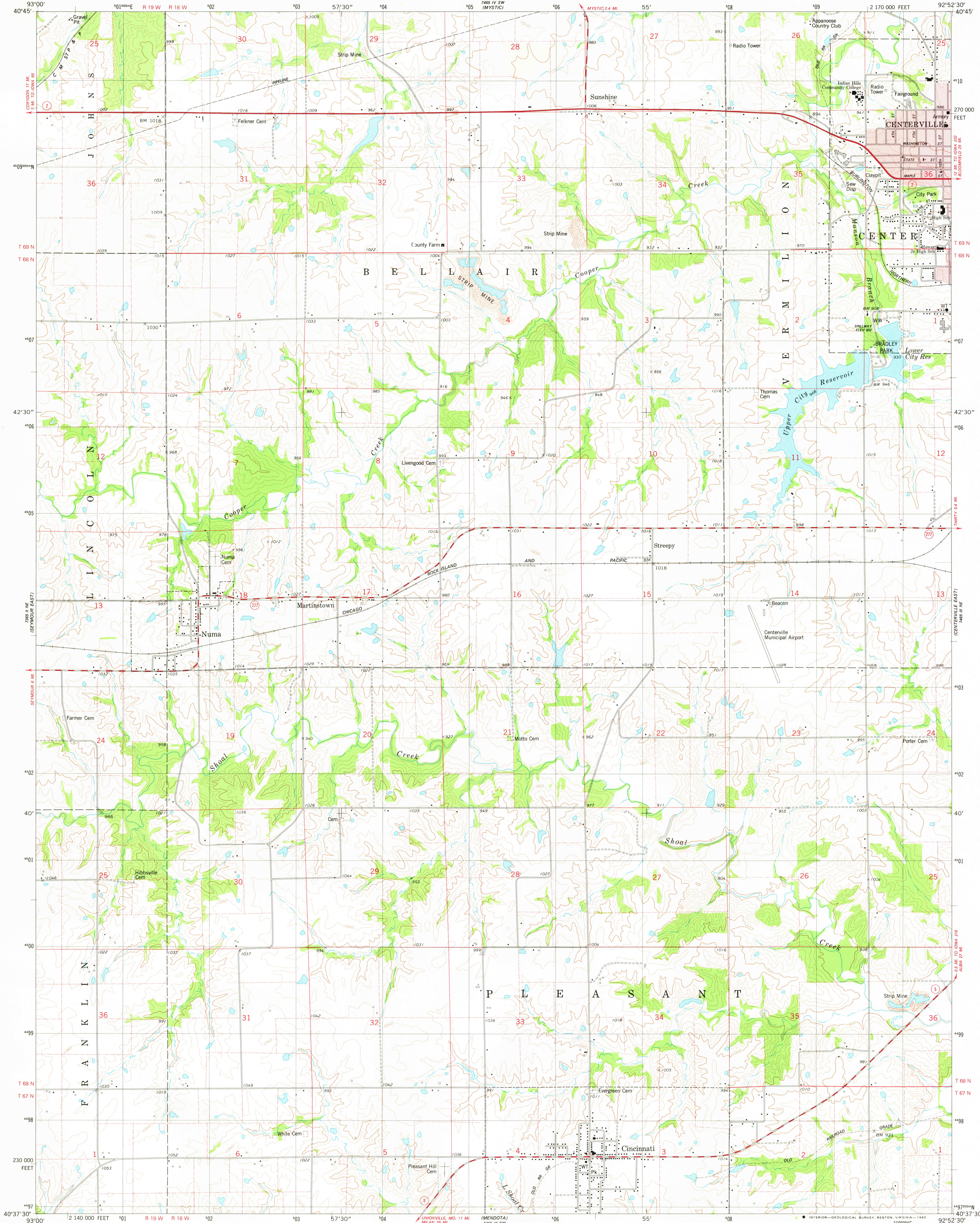
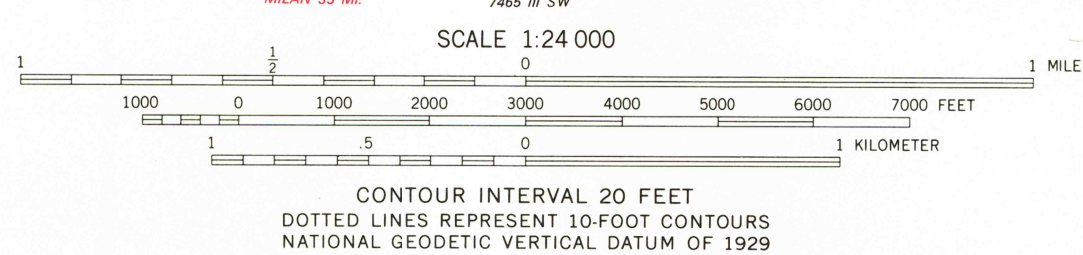
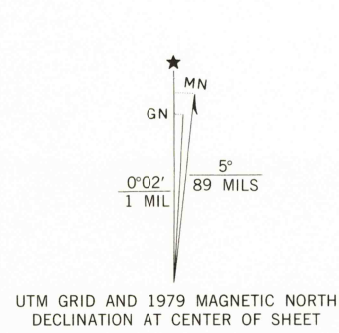


UNITED STATES
DEPARTMENT OF THE INTERIOR
GEOLOGICAL SURVEY

CENTERVILLE WEST QUADRANGLE
IOWA—APPANOOSE CO.
7.5 MINUTE SERIES (TOPOGRAPHIC)
NW/4 CENTERVILLE 15' QUADRANGLE



Mapped, edited, and published by the Geological Survey
Control by USGS and NOS/NOAA
Topography by photogrammetric methods from aerial photographs
taken 1974. Field checked 1976. Map edited 1979
Projection and 10,000-foot grid ticks: Iowa coordinate
system, south zone (Lambert conformal conic)
1000-meter Universal Transverse Mercator grid, zone 15
1927 North American datum
To place on the predicted North American Datum 1983
move the projection lines 2 meters north and
16 meters east as shown by dashed corner ticks
Red tint indicates areas in which only landmark buildings are shown
Fine red dashed lines indicate selected fence and field lines where
generally visible on aerial photographs. This information is unchecked



THIS MAP COMPLIES WITH NATIONAL MAP ACCURACY STANDARDS
FOR SALE BY U.S. GEOLOGICAL SURVEY, DENVER, COLORADO 80225 OR RESTON, VIRGINIA 22092
AND BY THE IOWA GEOLOGICAL SURVEY, IOWA CITY, IOWA 52240
A FOLDER DESCRIBING TOPOGRAPHIC MAPS AND SYMBOLS IS AVAILABLE ON REQUEST



ROAD CLASSIFICATION
Primary highway, hard surface
Secondary highway, hard surface
Unimproved road
Light-duty road, hard or improved surface
Unimproved road
Interstate Route
U. S. Route
State Route

USGS
Historical File
Topographic Division
CENTERVILLE WEST, IOWA
NW/4 CENTERVILLE 15' QUADRANGLE
N4037.5-W9252.5/7.5
1979

DMA 7465 III NW-SERIES V876

JUN - 3 1980