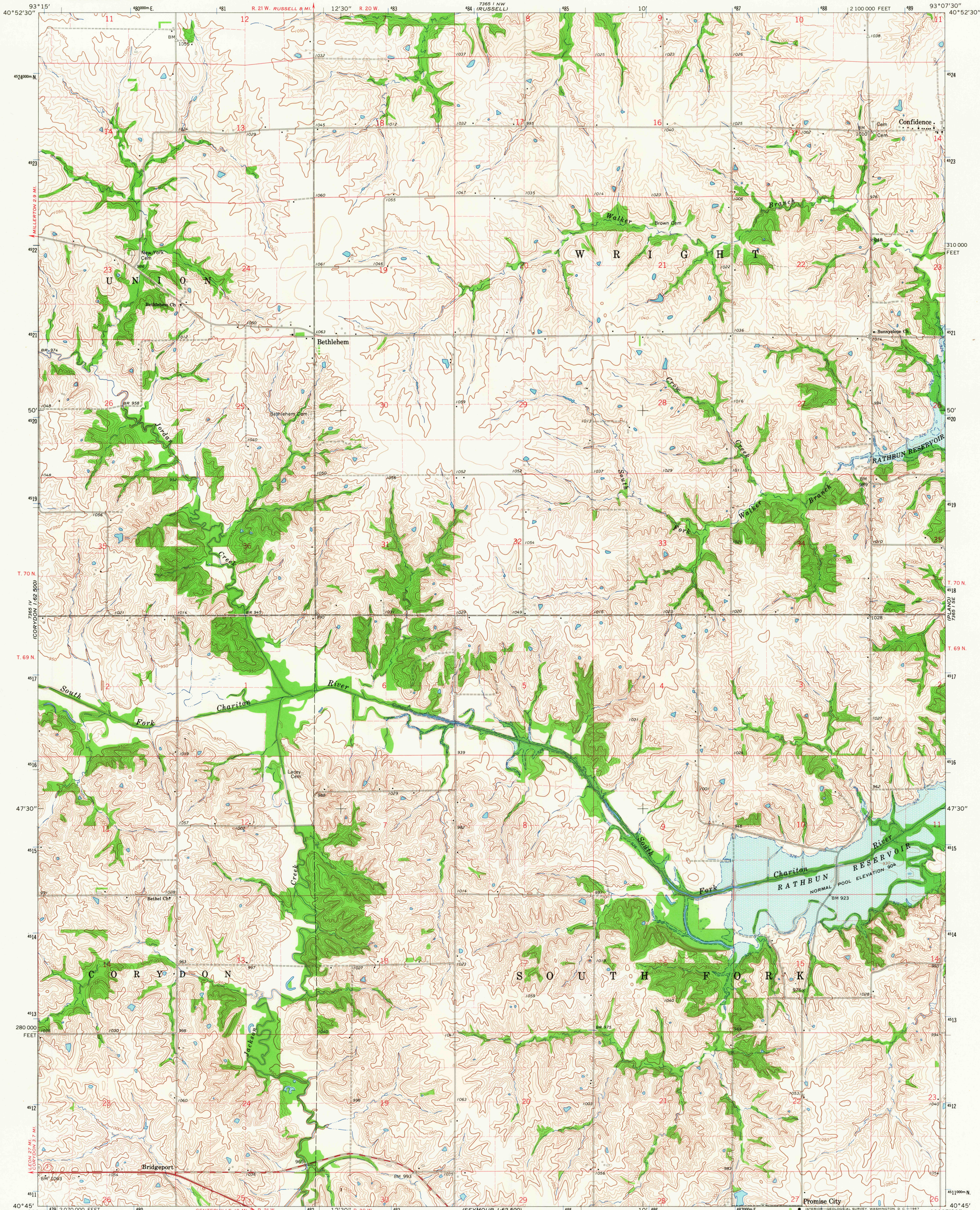
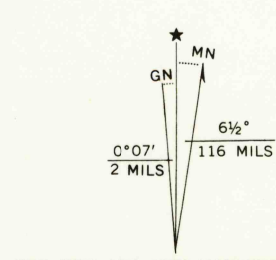


UNITED STATES
DEPARTMENT OF THE INTERIOR
GEOLOGICAL SURVEY

CONFIDENCE QUADRANGLE
IOWA-WAYNE CO.
7.5 MINUTE SERIES (TOPOGRAPHIC)
SW/4 RUSSELL 15' QUADRANGLE



Mapped, edited, and published by the Geological Survey as part of the Department of the Interior program for the development of the Missouri River Basin. Control by USGS and USC&GS. Topography by photogrammetric methods from aerial photographs taken 1964. Field checked 1966. Polyconic projection. 1927 North American datum. 10,000-foot grid based on Iowa coordinate system, south zone. 1000-meter Universal Transverse Mercator grid ticks, zone 15, shown in blue. Areas covered by dashed light-blue pattern are subject to controlled inundation. Fine red dashed lines indicate selected fence and field lines where generally visible on aerial photographs. This information is unchecked.



THIS MAP COMPLIES WITH NATIONAL MAP ACCURACY STANDARDS
FOR SALE BY U.S. GEOLOGICAL SURVEY, DENVER, COLORADO 80225 OR WASHINGTON, D. C. 20242
AND BY THE IOWA GEOLOGICAL SURVEY, IOWA CITY, IOWA 52240
A FOLDER DESCRIBING TOPOGRAPHIC MAPS AND SYMBOLS IS AVAILABLE ON REQUEST



ROAD CLASSIFICATION

Heavy-duty	Light-duty
Medium-duty	Unimproved dirt
State Route	

CONFIDENCE, IOWA
SW/4 RUSSELL 15' QUADRANGLE
N4045-W9307.5/7.5
1966
AMS 7365 1 SW-SERIES V876

2760
FEB 6 1968