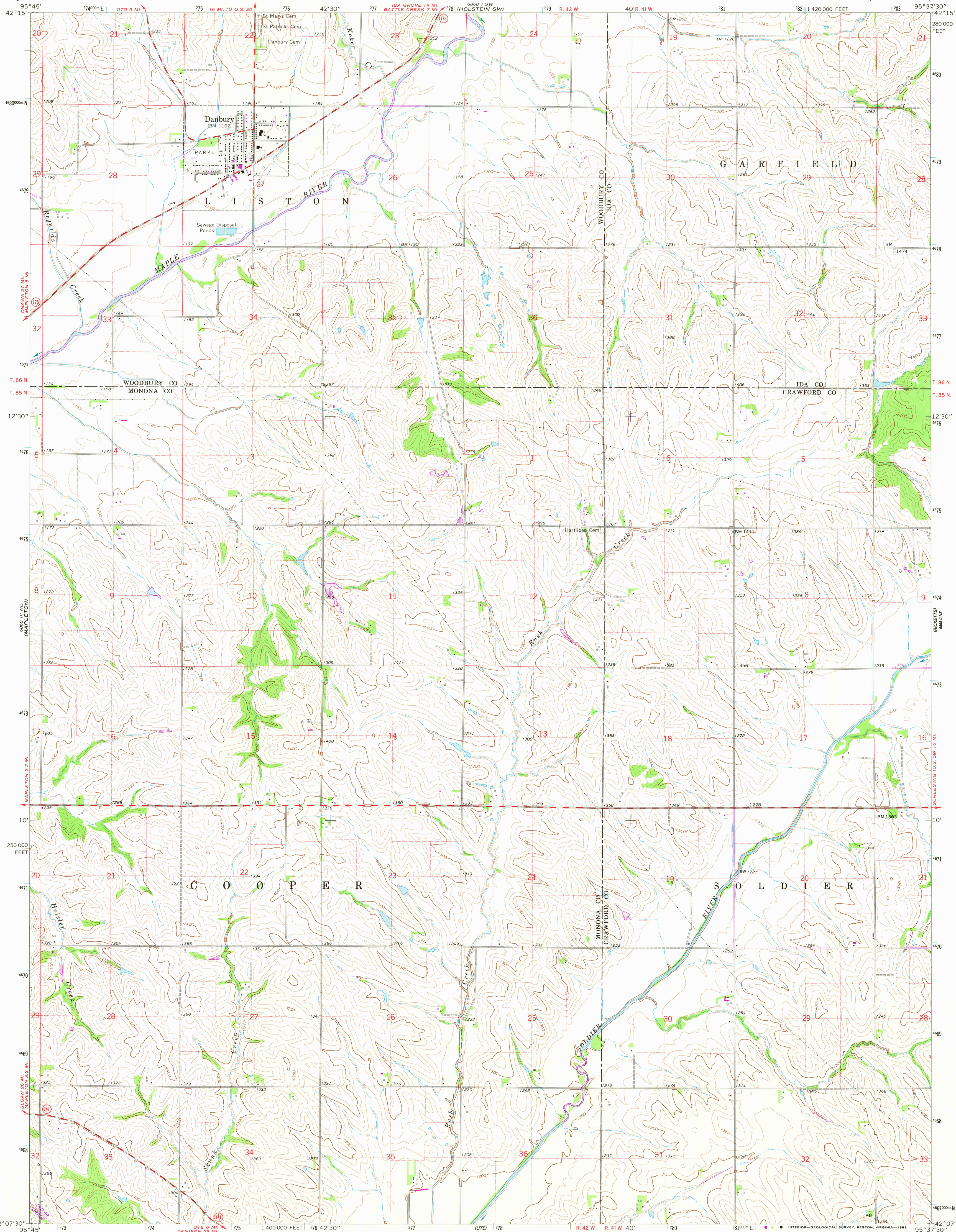
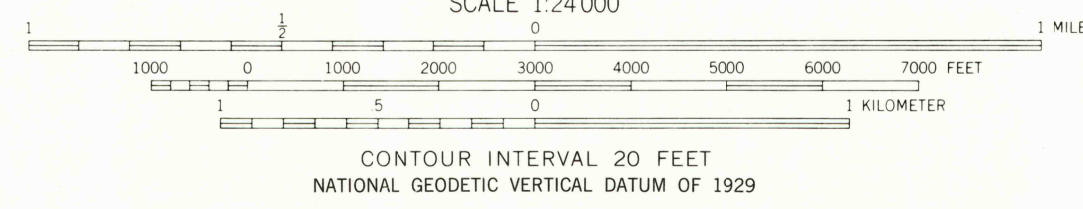
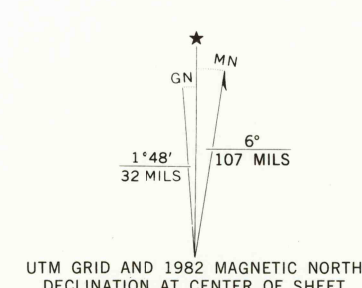


UNITED STATES  
DEPARTMENT OF THE INTERIOR  
GEOLOGICAL SURVEY

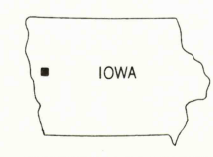
DANBURY QUADRANGLE  
IOWA  
7.5 MINUTE SERIES (TOPOGRAPHIC)



Mapped, edited, and published by the Geological Survey  
as part of the Department of the Interior program for  
the development of the Missouri River Basin  
Control by USGS and NOS/NOAA  
Topography by photogrammetric methods from aerial  
photographs taken 1968. Field checked 1969.  
Polyconic projection. 10,000-foot grid ticks based on Iowa coordinate  
system, north zone. 1000-meter Universal Transverse  
Mercator grid ticks, zone 15, shown in blue.  
1927 North American Datum. To place on the predicted  
North American Datum 1983 move the projection lines  
5 meters north and 23 meters east as shown by dashed corner ticks  
Fine red dashed lines indicate selected fence and field lines where  
generally visible on aerial photographs. This information is unchecked



THIS MAP COMPLIES WITH NATIONAL MAP ACCURACY STANDARDS  
FOR SALE BY U.S. GEOLOGICAL SURVEY, DENVER, COLORADO 80225, OR RESTON, VIRGINIA 22092  
AND BY THE IOWA GEOLOGICAL SURVEY, IOWA CITY, IOWA 52240  
A FOLDER DESCRIBING TOPOGRAPHIC MAPS AND SYMBOLS IS AVAILABLE ON REQUEST



ROAD CLASSIFICATION  
Secondary highway, all weather, Light-duty road, all weather,  
hard surface, improved surface  
Unimproved road, fair or dry  
weather  
State Route

DANBURY, IOWA  
N4207.5-W9537.5/7.5  
1969  
PHOTOREVISED 1982  
DMA 6868 II NW-SERIES V876

Revisions shown in purple and woodland compiled from  
aerial photographs taken 1980 and other sources  
This information not field checked. Map edited 1982