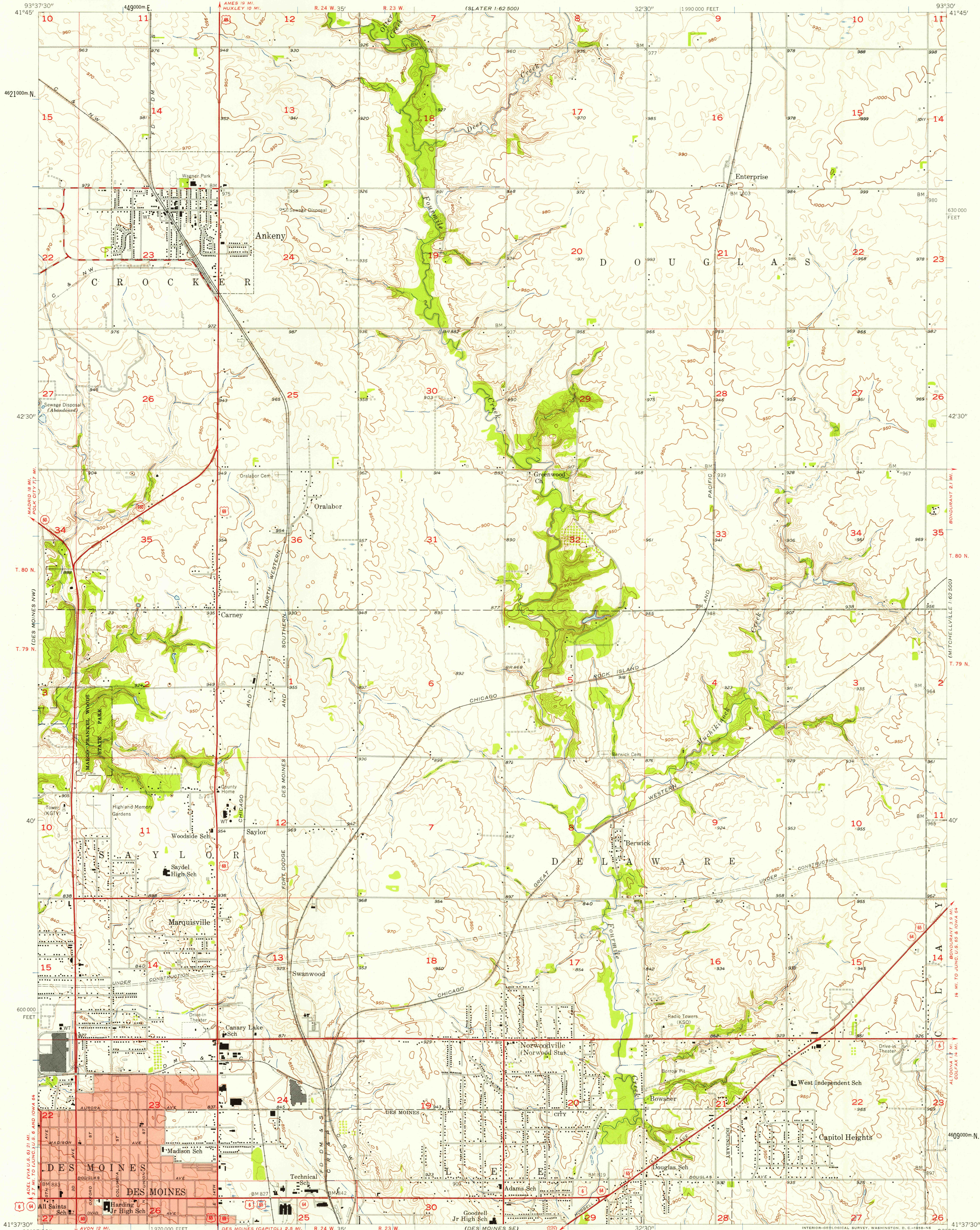


UNITED STATES
DEPARTMENT OF THE INTERIOR
GEOLOGICAL SURVEY

DES MOINES NE QUADRANGLE
IOWA—POLK CO.
7.5 MINUTE SERIES (TOPOGRAPHIC)
NE 1/4 DES MOINES 15' QUADRANGLE

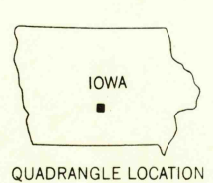


Maped, edited, and published by the Geological Survey
in cooperation with Polk County and City of Des Moines
Control by USGS, USC&GS, and Iowa Geodetic Survey
Topography from aerial photographs by Kelsh plotter
Aerial photographs taken 1956. Field check 1956
Polyconic projection. 1927 North American datum
10,000-foot grid based on Iowa coordinate system, south zone
1000-meter Universal Transverse Mercator grid ticks,
zone 15, shown in blue
Red tint indicates area in which only
landmark buildings are shown

TRUE NORTH
MAGNETIC NORTH
APPROXIMATE MEAN
DECLINATION, 1956

SCALE 1:24000
1 0 1000 2000 3000 4000 5000 6000 7000 FEET
1 5 10 15 20 25 30 KILOMETER
CONTOUR INTERVAL 10 FEET
DATUM IS MEAN SEA LEVEL
THIS MAP COMPLIES WITH NATIONAL MAP ACCURACY STANDARDS
FOR SALE BY U. S. GEOLOGICAL SURVEY, DENVER 2, COLORADO OR WASHINGTON 25, D. C.
AND BY THE IOWA GEOLOGICAL SURVEY, IOWA CITY, IOWA
A FOLDER DESCRIBING TOPOGRAPHIC MAPS AND SYMBOLS IS AVAILABLE ON REQUEST

USGS
Historical File
Topographic Division



ROAD CLASSIFICATION
Heavy-duty ——— Light-duty ———
Medium-duty ——— Unimproved dirt ———
U. S. Route ——— State Route ———

U.S.G.S.
FILE COPY
TOPOGRAPHIC DIVISION

DES MOINES NE, IOWA
NE 1/4 DES MOINES 15' QUADRANGLE
N 4137.5—W 9330/7.5
1956