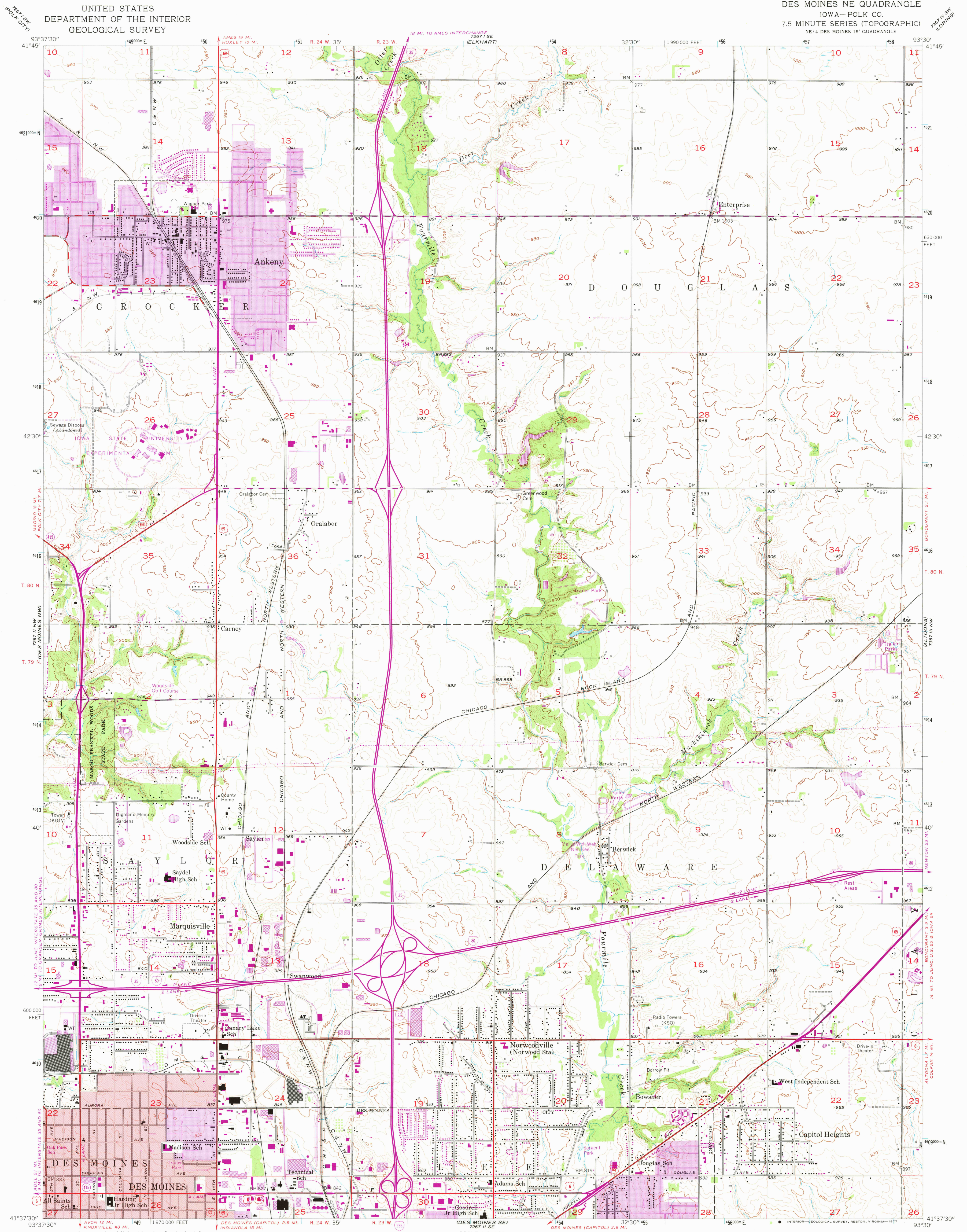
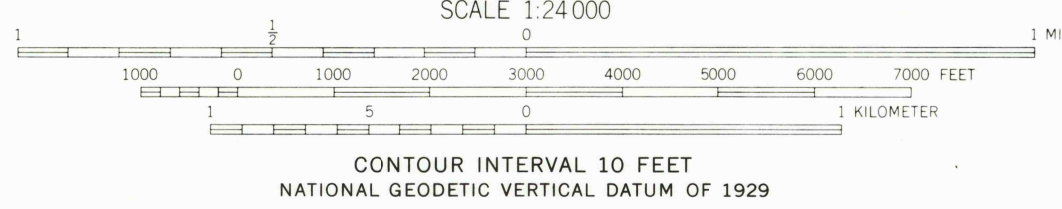
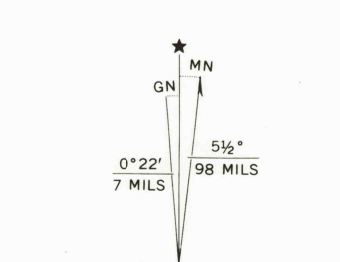


UNITED STATES  
DEPARTMENT OF THE INTERIOR  
GEOLOGICAL SURVEY

DES MOINES NE QUADRANGLE  
IOWA—POLK CO.  
7.5 MINUTE SERIES (TOPOGRAPHIC)  
NE 1/4 DES MOINES 15' QUADRANGLE



Mapped, edited, and published by the Geological Survey in cooperation with Polk County and City of Des Moines  
Control by USGS, USC&GS, and Iowa Geodetic Survey  
Topography from aerial photographs by Kelsch plotter  
Aerial photographs taken 1956. Field check 1956  
Polyconic projection. 1927 North American datum  
10,000-foot grid based on Iowa coordinate system, south zone  
1000-meter Universal Transverse Mercator grid ticks, zone 15, shown in blue  
Red tint indicates area in which only landmark buildings are shown  
Revisions shown in purple compiled from aerial photographs taken 1967, 1971, and 1976. This information not field checked  
Purple tint indicates extension of urban areas



ROAD CLASSIFICATION	
Heavy-duty	Light-duty
Medium-duty	Unimproved dirt
Interstate Route	U. S. Route
	State Route

USGS  
Historical File  
Topographic Division

DES MOINES NE, IOWA  
NE 1/4 DES MOINES 15' QUADRANGLE  
N4137.5—W9330/7.5  
1956

PHOTOREVISED 1967, 1971, AND 1976  
AMS 7267 II NE—SERIES 7876

MAR 22 1978  
3150