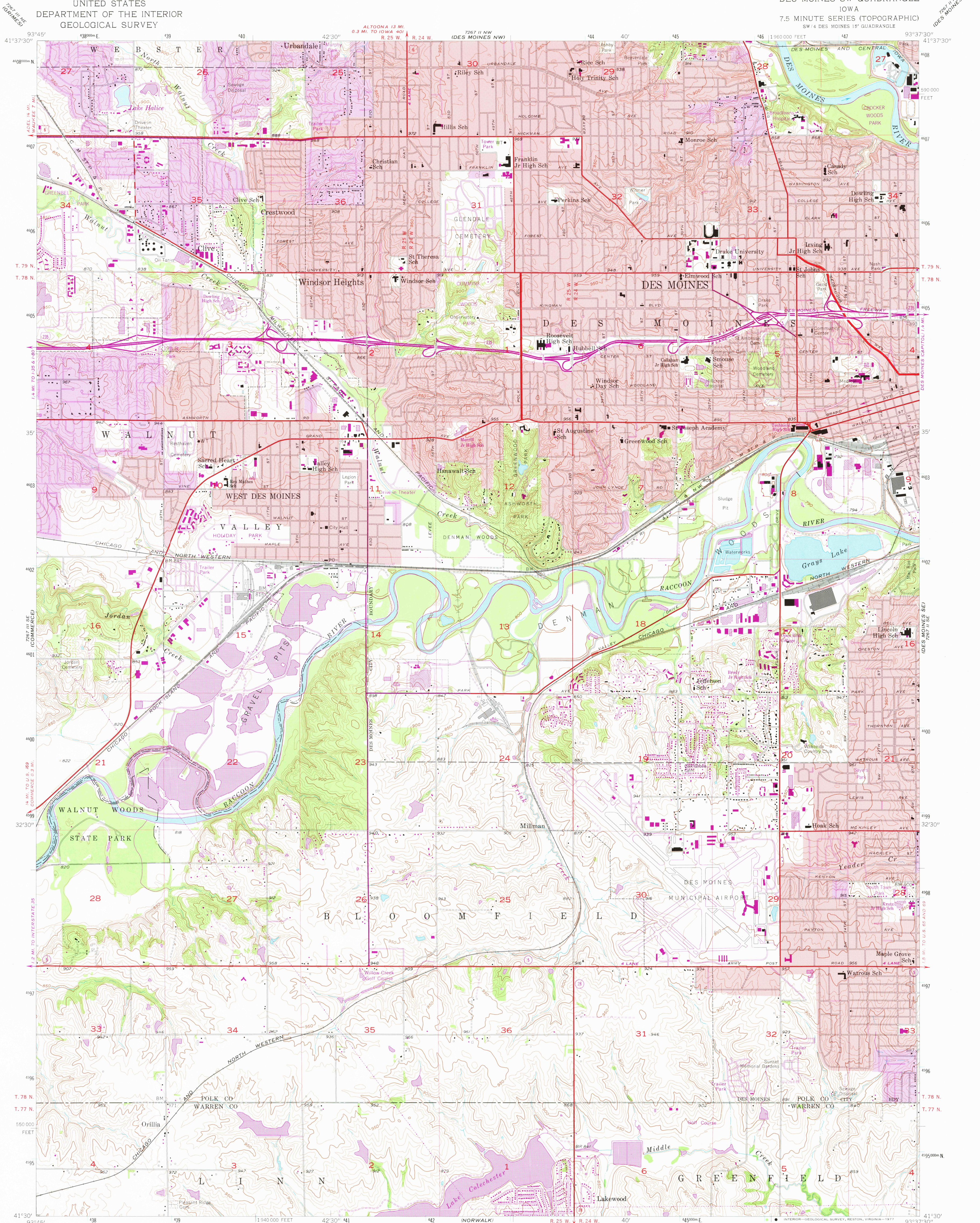
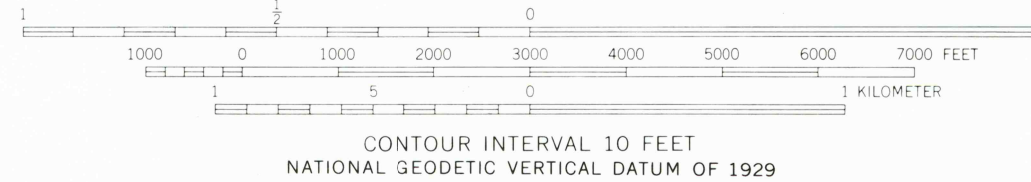
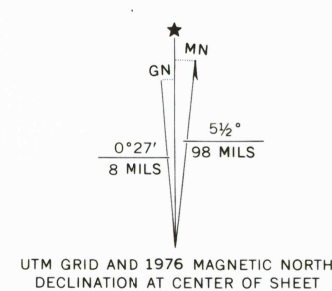


UNITED STATES
DEPARTMENT OF THE INTERIOR
GEOLOGICAL SURVEY

DES MOINES SW QUADRANGLE
IOWA
7.5 MINUTE SERIES (TOPOGRAPHIC)
SW 1/4 DES MOINES 15' QUADRANGLE



Mapped, edited, and published by the Geological Survey in cooperation with Polk County and City of Des Moines
Control by USGS, USC&GS, and Iowa Geodetic Survey
Topography from aerial photographs by Kelsh plotter
Aerial photographs taken 1956. Field check 1956
Polyconic projection. 1927 North American datum
10,000-foot grid based on Iowa coordinate system, south zone
1000-meter Universal Transverse Mercator grid ticks, zone 15, shown in blue
Red tint indicates areas in which only landmark buildings are shown
City boundaries of Des Moines, West Des Moines, Clive, Urbandale, and Windsor Heights are in litigation
Revisions shown in purple include extension of aerial photographs taken 1967, 1971, and 1976. This information not field checked
Purple tint indicates extension of urban areas



ROAD CLASSIFICATION
Heavy-duty ——— Light-duty ———
Medium-duty ——— Unimproved dirt ———
Interstate Route ——— U. S. Route ——— State Route ———

DES MOINES SW, IOWA
SW 1/4 DES MOINES 15' QUADRANGLE
N4130—W9337.5/7.5
1956
PHOTOREVISED 1967, 1971, AND 1976
AMS 7267 II SW—SERIES V876

APR 04 1978