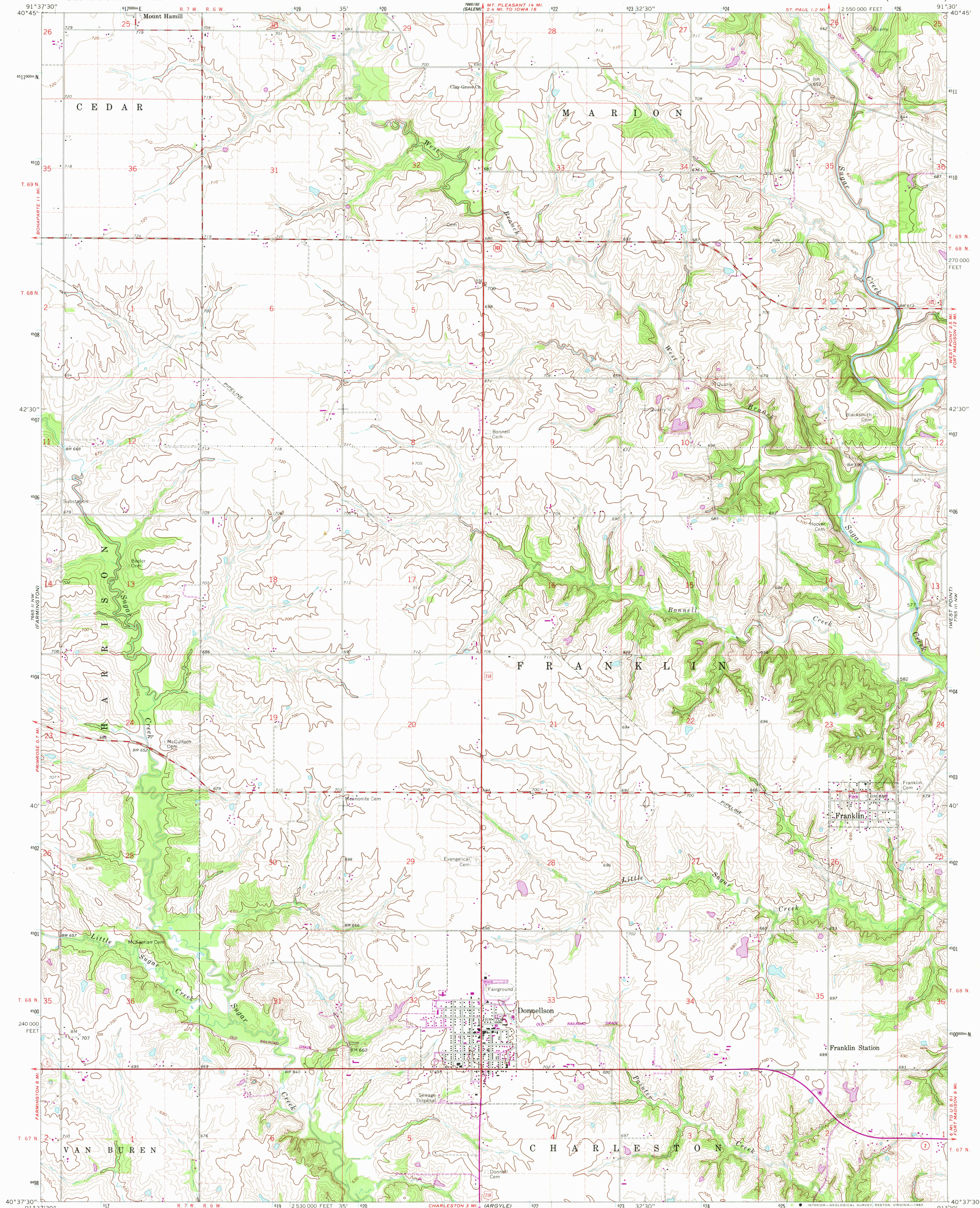


UNITED STATES  
DEPARTMENT OF THE INTERIOR  
GEOLOGICAL SURVEY

DONNELLSON QUADRANGLE  
IOWA—LEE CO.  
7.5 MINUTE SERIES (TOPOGRAPHIC)



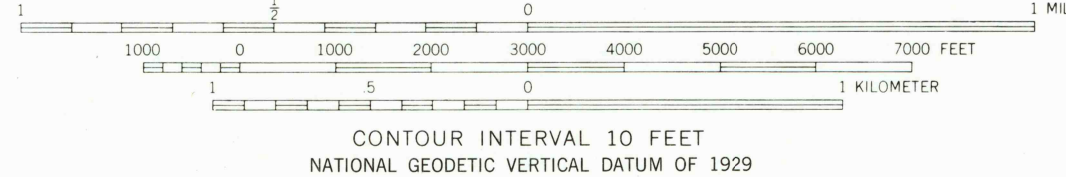
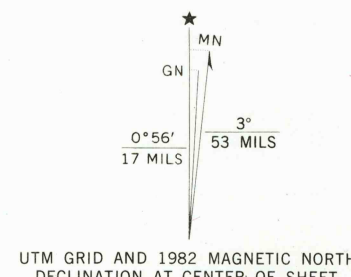
Mapped, edited, and published by the Geological Survey  
Control by USGS and NOS/NOAA

Topography by photogrammetric methods from aerial photographs  
taken 1965. Field checked 1968

Polyconic projection. 10,000-foot grid ticks based on Iowa coordinate  
system, south zone. 1000-meter Universal Transverse Mercator grid  
ticks, zone 15, shown in blue. 1927 North American Datum  
To place on the predicted North American Datum 1983 move the  
projection lines 1 meter north and 13 meters east as shown by  
dashed corner ticks

Fine red dashed lines indicate selected fence and field lines where  
generally visible on aerial photographs. This information is unchecked

Revisions shown in purple and woodland compiled from aerial  
photographs taken 1981 and other sources. This information  
not field checked. Map edited 1982



THIS MAP COMPLIES WITH NATIONAL MAP ACCURACY STANDARDS  
FOR SALE BY U. S. GEOLOGICAL SURVEY, DENVER, COLORADO 80225, OR RESTON, VIRGINIA 22092  
AND BY THE IOWA GEOLOGICAL SURVEY, IOWA CITY, IOWA 52240  
A FOLDER DESCRIBING TOPOGRAPHIC MAPS AND SYMBOLS IS AVAILABLE ON REQUEST



ROAD CLASSIFICATION  
Primary highway, all weather, hard surface  
Secondary highway, all weather, hard surface  
Light-duty road, all weather, improved surface  
Unimproved road, fair or dry weather  
U. S. Route  
State Route

DONNELLSON, IOWA  
N4037.5—W9130.7/7.5

1968  
PHOTOREVISED 1982  
DMA 7665 II NE—SERIES V876

8/29/83