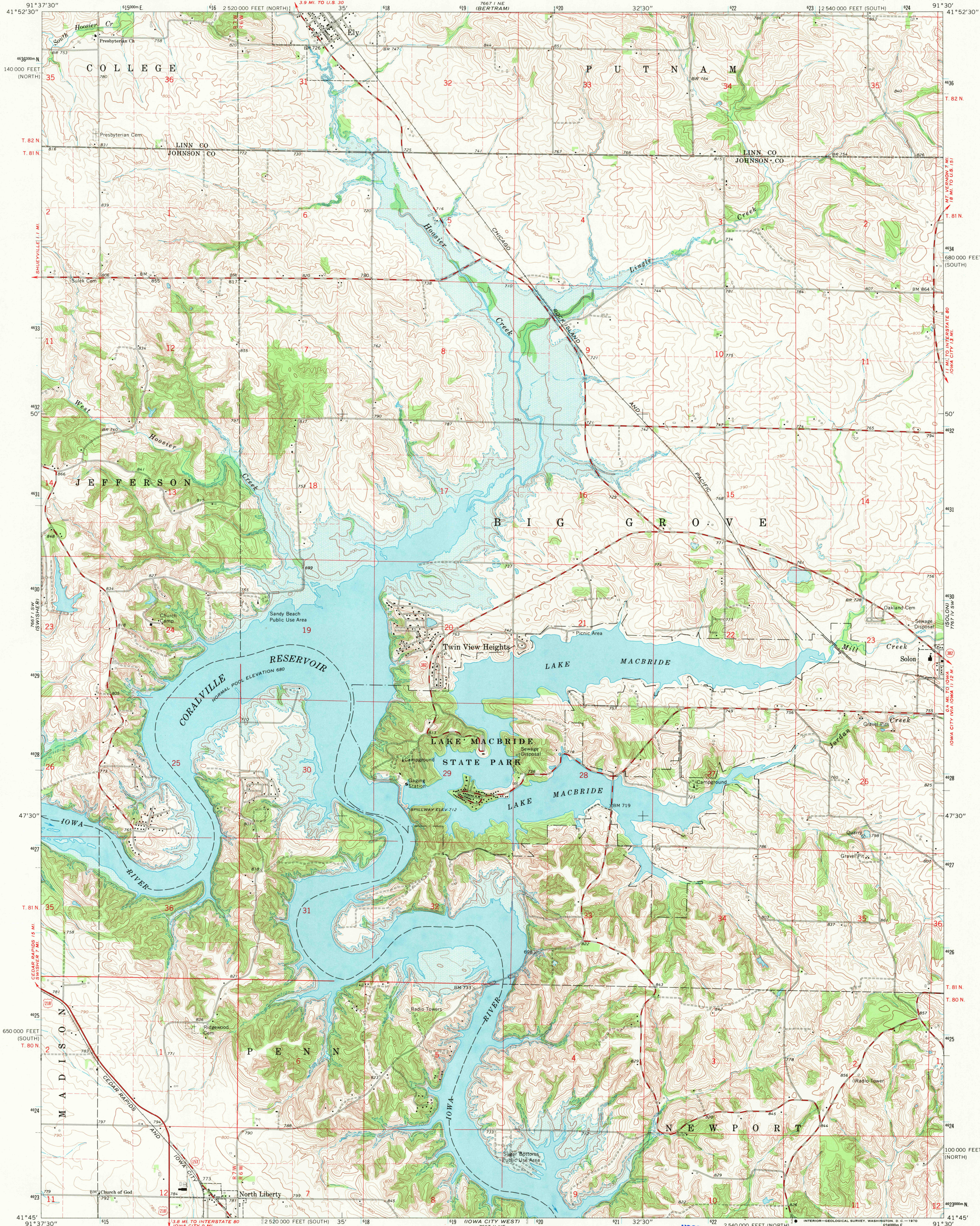


UNITED STATES  
DEPARTMENT OF THE INTERIOR  
GEOLOGICAL SURVEY

ELY QUADRANGLE  
IOWA  
7.5 MINUTE SERIES (TOPOGRAPHIC)



Mapped, edited, and published by the Geological Survey

Control by USGS, USC&GS, and Iowa Geodetic Survey

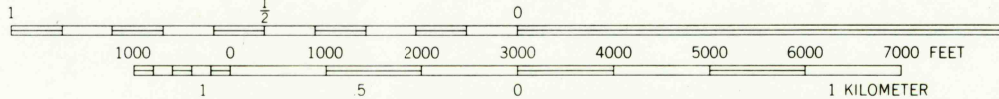
Topography by photogrammetric methods from aerial photographs taken 1965 and planetable surveys 1968

Polyconic projection. 1927 North American datum  
10,000-foot grids based on Iowa coordinate system, south and north zones  
1000-meter Universal Transverse Mercator grid ticks, zone 15, shown in blue

Areas covered by dashed light-blue pattern are subject to controlled inundation

Fine red dashed lines indicate selected fence and field lines where generally visible on aerial photographs. This information is unchecked

UTM GRID AND 1968 MAGNETIC NORTH DECLINATION AT CENTER OF SHEET



CONTOUR INTERVAL 10 FEET  
DATUM IS MEAN SEA LEVEL

THIS MAP COMPLIES WITH NATIONAL MAP ACCURACY STANDARDS  
FOR SALE BY U.S. GEOLOGICAL SURVEY, DENVER, COLORADO 80225 OR WASHINGTON, D.C. 20242  
AND BY THE IOWA GEOLOGICAL SURVEY, IOWA CITY, IOWA 52240  
A FOLDER DESCRIBING TOPOGRAPHIC MAPS AND SYMBOLS IS AVAILABLE ON REQUEST



QUADRANGLE LOCATION

U.S.G.S.

FILE COPY  
TOPOGRAPHIC DIVISION

ELY, IOWA  
N4145—W9130/7.5

1968

AMS 7667 1 SE—SERIES V876

SEP 11 1970