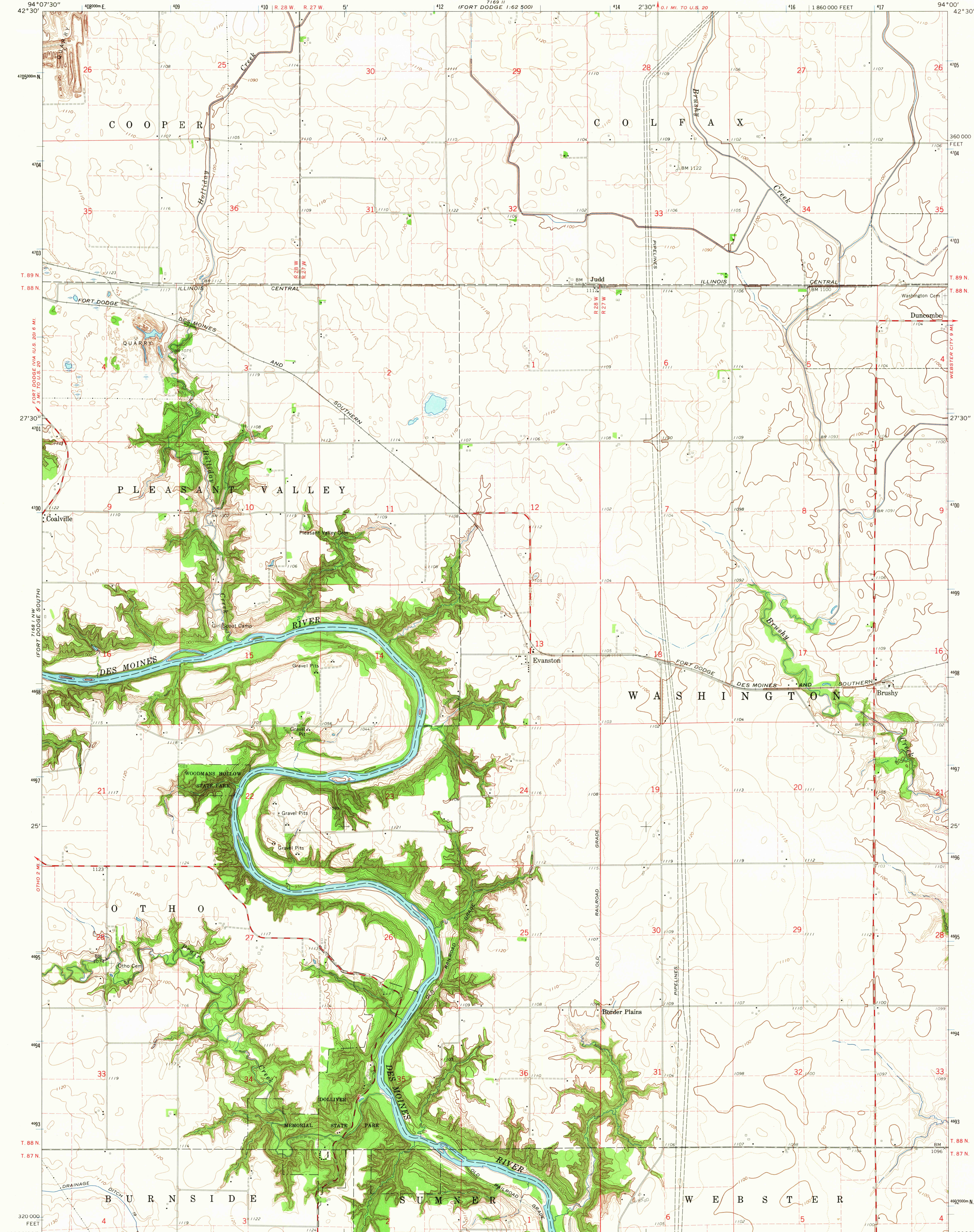


UNITED STATES
DEPARTMENT OF THE INTERIOR
GEOLOGICAL SURVEY

EVANSTON QUADRANGLE
IOWA—WEBSTER CO.
7.5 MINUTE SERIES (TOPOGRAPHIC)
NE/4 LEIGH 15' QUADRANGLE



Mapped, edited, and published by the Geological Survey

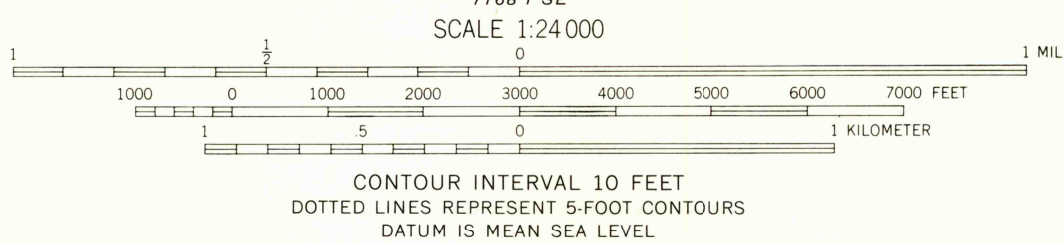
Control by USGS and USC&GS

Topography by photogrammetric methods from aerial photographs taken 1964. Field checked 1965

Polyconic projection. 1927 North American datum
10,000-foot grid based on Iowa coordinate system, north zone
1000-meter Universal Transverse Mercator grid ticks,
zone 15, shown in blue

Fine red dashed lines indicate selected fence and field lines where
generally visible on aerial photographs
This information is unchecked

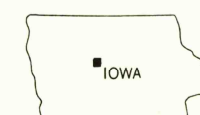
UTM GRID AND 1965 MAGNETIC NORTH
DECLINATION AT CENTER OF SHEET



THIS MAP COMPLIES WITH NATIONAL MAP ACCURACY STANDARDS
FOR SALE BY U. S. GEOLOGICAL SURVEY, DENVER, COLORADO 80225 OR WASHINGTON, D. C. 20242
AND BY THE IOWA GEOLOGICAL SURVEY, IOWA CITY, IOWA
A FOLDER DESCRIBING TOPOGRAPHIC MAPS AND SYMBOLS IS AVAILABLE ON REQUEST

USGS
Historical File
Topographic Division

ROAD CLASSIFICATION
Medium-duty ——— Light-duty ———
Unimproved dirt ———



U.S.G.S.
TOPOGRAPHIC DIVISION

EVANSTON, IOWA
NE/4 LEIGH 15' QUADRANGLE
N4222.5—W9400/7.5

1965

AMS 7168 I NE—SERIES V876

2655
JUL 14 1966