

7569 1/4 NW  
(CEDAR FALLS)

7569 1/4 SW  
(CEDAR FALLS)

7569 1/4 SE  
(CEDAR FALLS)

7569 1/4 NE  
(CEDAR FALLS)

7569 1/4 NW  
(CEDAR FALLS)

7569 1/4 SW  
(CEDAR FALLS)

7569 1/4 SE  
(CEDAR FALLS)

7569 1/4 NE  
(CEDAR FALLS)

7569 1/4 NW  
(CEDAR FALLS)

7569 1/4 SW  
(CEDAR FALLS)

7569 1/4 SE  
(CEDAR FALLS)

7569 1/4 NE  
(CEDAR FALLS)

7569 1/4 NW  
(CEDAR FALLS)

7569 1/4 SW  
(CEDAR FALLS)

7569 1/4 SE  
(CEDAR FALLS)

7569 1/4 NE  
(CEDAR FALLS)

7569 1/4 NW  
(CEDAR FALLS)

7569 1/4 SW  
(CEDAR FALLS)

7569 1/4 SE  
(CEDAR FALLS)

7569 1/4 NE  
(CEDAR FALLS)

7569 1/4 NW  
(CEDAR FALLS)

7569 1/4 SW  
(CEDAR FALLS)

7569 1/4 SE  
(CEDAR FALLS)

7569 1/4 NE  
(CEDAR FALLS)

7569 1/4 NW  
(CEDAR FALLS)

7569 1/4 SW  
(CEDAR FALLS)

7569 1/4 SE  
(CEDAR FALLS)

7569 1/4 NE  
(CEDAR FALLS)

7569 1/4 NW  
(CEDAR FALLS)

7569 1/4 SW  
(CEDAR FALLS)

7569 1/4 SE  
(CEDAR FALLS)

7569 1/4 NE  
(CEDAR FALLS)

7569 1/4 NW  
(CEDAR FALLS)

7569 1/4 SW  
(CEDAR FALLS)

7569 1/4 SE  
(CEDAR FALLS)

7569 1/4 NE  
(CEDAR FALLS)

7569 1/4 NW  
(CEDAR FALLS)

7569 1/4 SW  
(CEDAR FALLS)

7569 1/4 SE  
(CEDAR FALLS)

7569 1/4 NE  
(CEDAR FALLS)

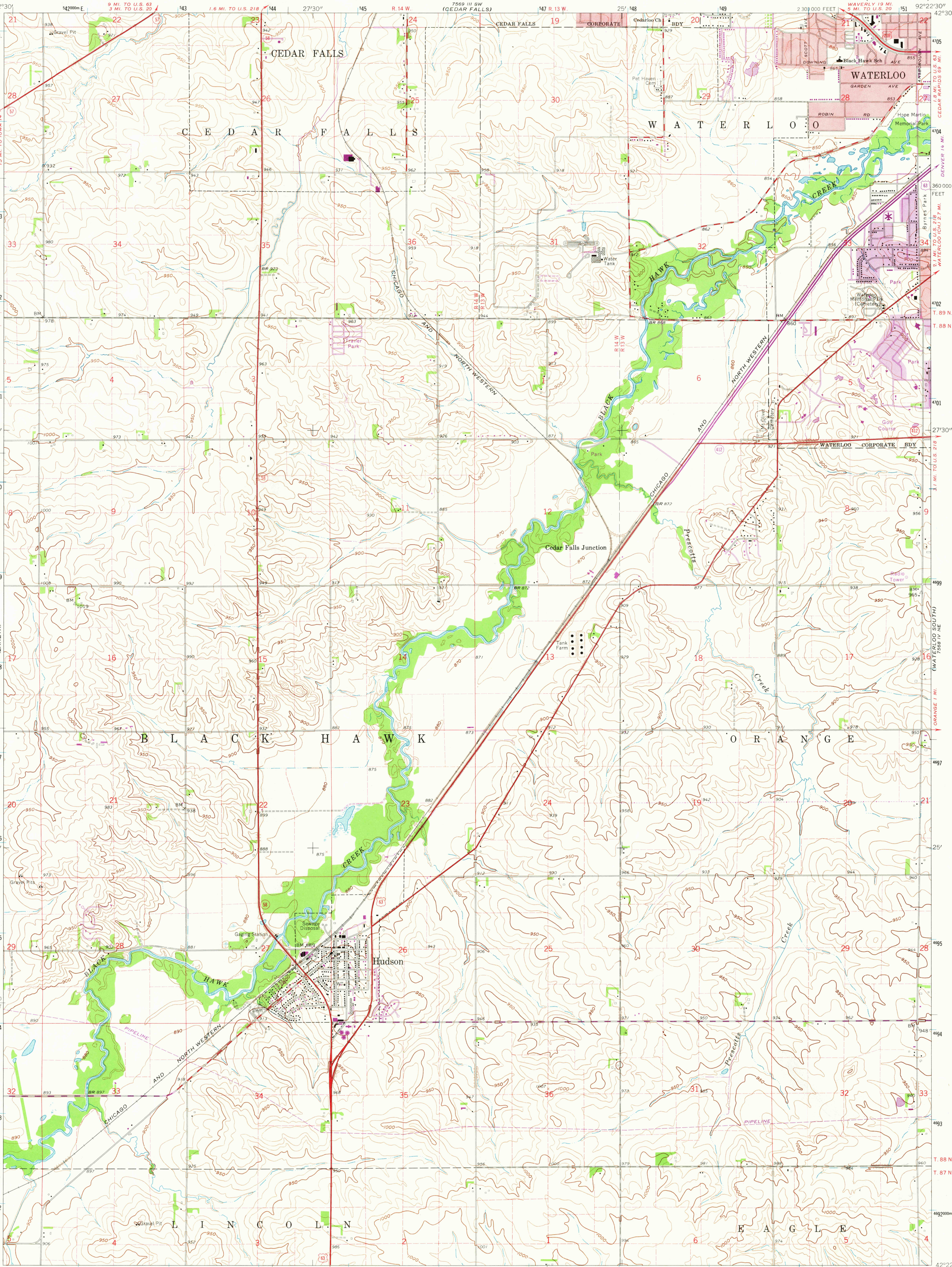
7569 1/4 NW  
(CEDAR FALLS)

7569 1/4 SW  
(CEDAR FALLS)

7569 1/4 SE  
(CEDAR FALLS)

7569 1/4 NE  
(CEDAR FALLS)

7569 1/4 NW  
(CEDAR FALLS)



Mapped, edited, and published by the Geological Survey

Control by USGS and USC&GS

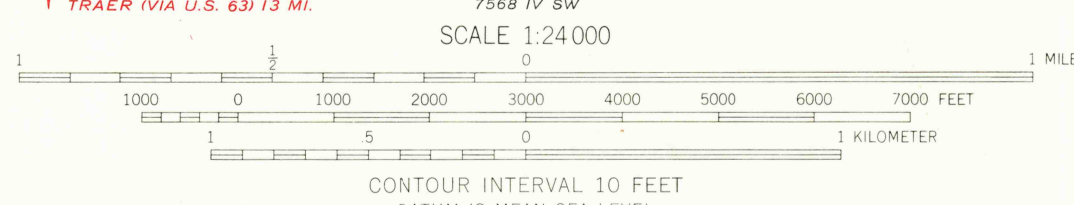
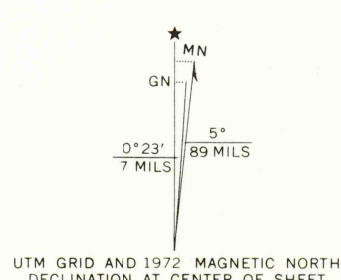
Topography by photogrammetric methods from aerial photographs taken 1958 and 1963. Field checked 1963

Polyconic projection. 1927 North American datum  
10,000-foot grid based on Iowa coordinate system, north zone  
1000-meter Universal Transverse Mercator grid ticks,  
zone 15, shown in blue

Red tint indicates areas in which only landmark buildings are shown  
Fine red dashed lines indicate selected fence and field lines where  
generally visible on aerial photographs. This information is unchecked

Revisions shown in purple compiled from aerial photographs  
taken 1972. This information not field checked

Purple tint indicates extension of urban areas



THIS MAP COMPLIES WITH NATIONAL MAP ACCURACY STANDARDS  
FOR SALE BY U.S. GEOLOGICAL SURVEY, DENVER, COLORADO 80225, OR WASHINGTON, D. C. 20242  
AND BY THE IOWA GEOLOGICAL SURVEY, IOWA CITY, IOWA 52240  
A FOLDER DESCRIBING TOPOGRAPHIC MAPS AND SYMBOLS IS AVAILABLE ON REQUEST



ROAD CLASSIFICATION	
Heavy-duty	Light-duty
Medium-duty	Unimproved dirt
U.S. Route	State Route

HUDSON, IOWA  
N4222.5—W9222.5/7.5

1963  
PHOTOREVISED 1972  
AMS 7568 IV NW—SERIES V876

USGS  
HISTORICAL FILE  
TOPOGRAPHIC DIVISION

FEB 27 1973

2555