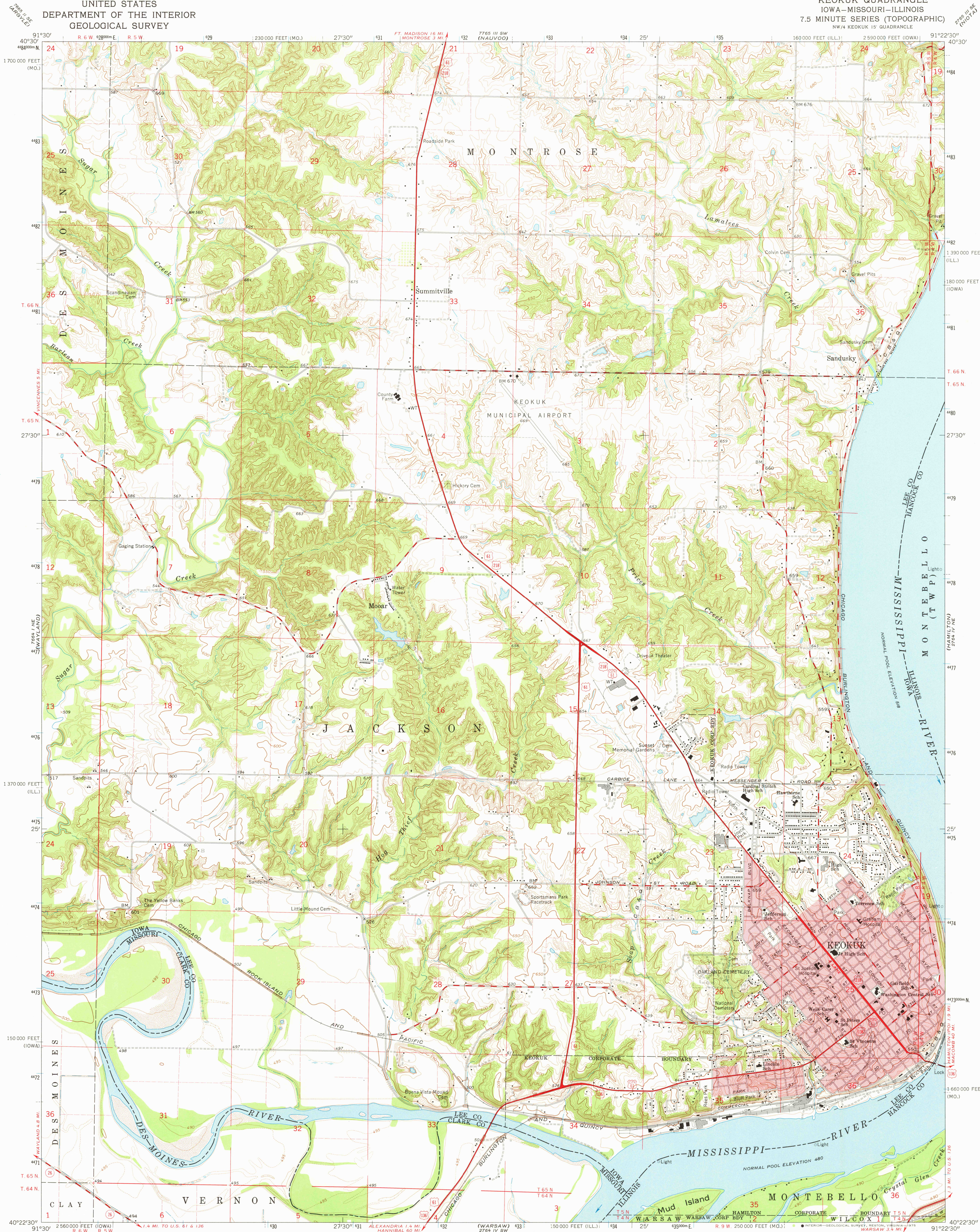
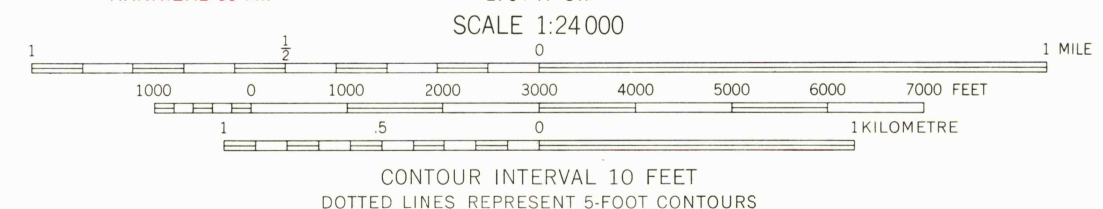
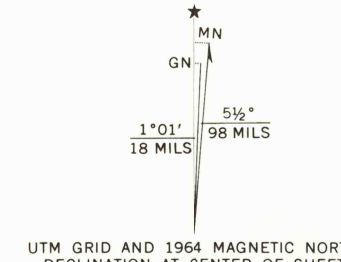


UNITED STATES
DEPARTMENT OF THE INTERIOR
GEOLOGICAL SURVEY

KEOKUK QUADRANGLE
IOWA—MISSOURI—ILLINOIS
7.5 MINUTE SERIES (TOPOGRAPHIC)
NW/4 KEOKUK 15 QUADRANGLE



Mapped, edited, and published by the Geological Survey
Control by USGS and USC&GS
Topography by photogrammetric methods from aerial
photographs taken 1962. Field checked 1964
Polyconic projection. 1927 North American datum
10,000-foot grids based on Iowa coordinate system, south zone,
Missouri coordinate system, east zone, and Illinois
coordinate system, west zone
1000-metre Universal Transverse Mercator grid ticks,
zone 15, shown in blue
Red tint indicates areas in which only landmark buildings are shown
Fine red dashed lines indicate selected fence and field lines where
generally visible on aerial photographs. This information is unchecked



THIS MAP COMPLIES WITH NATIONAL MAP ACCURACY STANDARDS
FOR SALE BY U.S. GEOLOGICAL SURVEY, DENVER, COLORADO 80225, OR RESTON, VIRGINIA 22092
THE IOWA GEOLOGICAL SURVEY, IOWA CITY, IOWA 52240.
AND BY THE DIVISION OF RESEARCH AND TECHNICAL INFORMATION
MISSOURI DEPARTMENT OF NATURAL RESOURCES, ROLLA, MISSOURI 65401
AND BY THE STATE GEOLOGICAL SURVEY, URBANA, ILLINOIS 61801
A FOLDER DESCRIBING TOPOGRAPHIC MAPS AND SYMBOLS IS AVAILABLE ON REQUEST



ROAD CLASSIFICATION
Heavy-duty ——— Light-duty ———
Medium-duty ——— Unimproved dirt ———
U.S. Route ——— State Route ———

KEOKUK, IOWA—MO.—ILL.
NW/4 KEOKUK 15 QUADRANGLE
N4022.5—W9122.5/7.5
1964
AMS 2764 IV NW—SERIES V863

OCT 30 1975