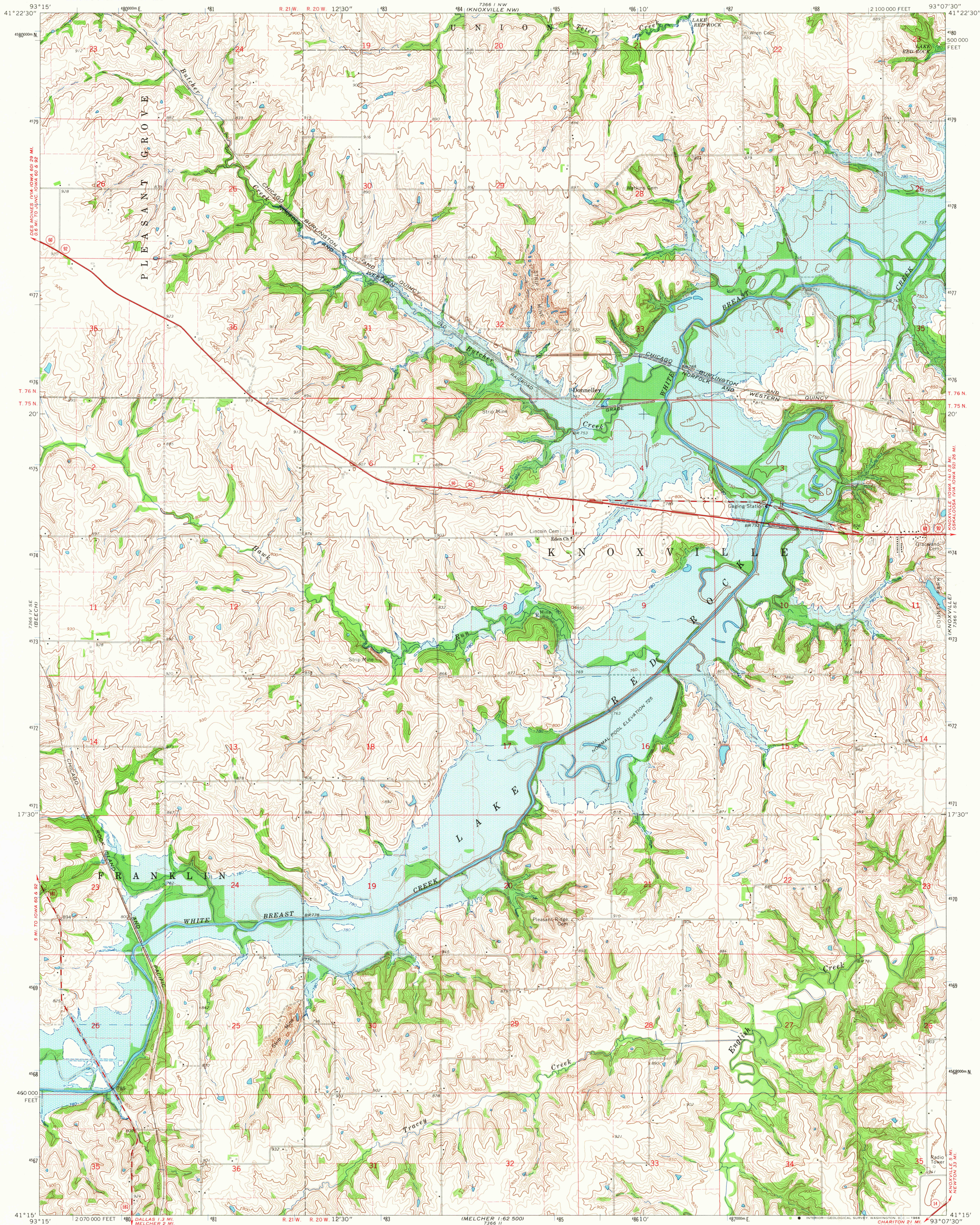


UNITED STATES
DEPARTMENT OF THE INTERIOR
GEOLOGICAL SURVEY

KNOXVILLE SW QUADRANGLE
IOWA—MARION CO.
7.5 MINUTE SERIES (TOPOGRAPHIC)
SW/4 KNOXVILLE 15' QUADRANGLE



Mapped, edited, and published by the Geological Survey

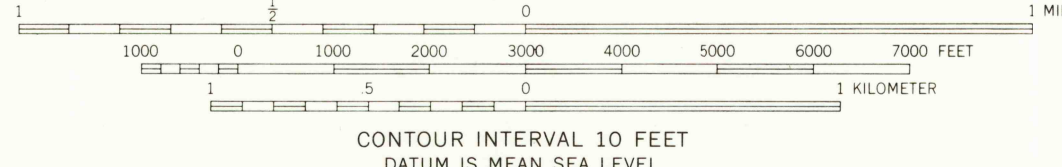
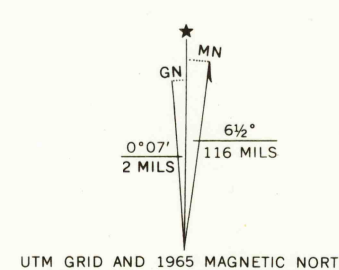
Control by USGS and USC&GS

Topography by photogrammetric methods from aerial photographs taken 1964. Field checked 1965

Polyconic projection, 1927 North American datum
10,000-foot grid based on Iowa coordinate system; south zone
1000-meter Universal Transverse Mercator grid ticks,
zone 15, shown in blue

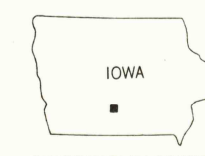
Areas covered by dashed light-blue pattern
are subject to controlled inundation

Fine red dashed lines indicate selected fence and field lines where
generally visible on aerial photographs. This information is unchecked



THIS MAP COMPLIES WITH NATIONAL MAP ACCURACY STANDARDS
FOR SALE BY U. S. GEOLOGICAL SURVEY, DENVER, COLORADO 80225 OR WASHINGTON, D. C. 20242
AND BY THE IOWA GEOLOGICAL SURVEY, IOWA CITY, IOWA 52240
A FOLDER DESCRIBING TOPOGRAPHIC MAPS AND SYMBOLS IS AVAILABLE ON REQUEST

USGS
Historical File
Topographic Division



U.S.G.S.

TOPOGRAPHIC DIVISION

ROAD CLASSIFICATION
Heavy-duty ——— Light-duty ———
Medium-duty ——— Unimproved dirt ———
○ State Route

KNOXVILLE SW, IOWA
SW/4 KNOXVILLE 15' QUADRANGLE
N4115—W9307.5/7.5

1965

AMS 7366 I SW—SERIES V876

2395

JAN 3 1967