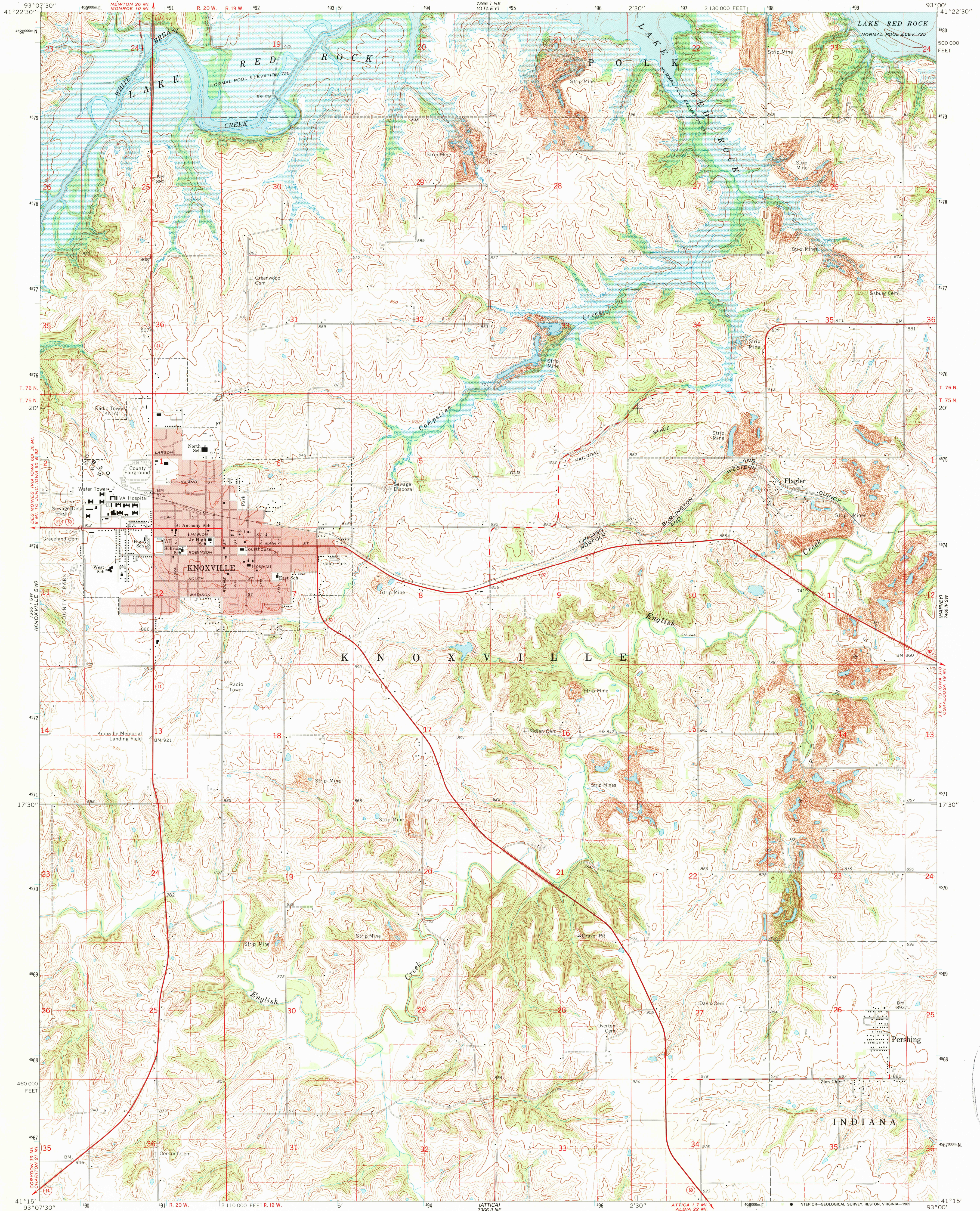


UNITED STATES
DEPARTMENT OF THE INTERIOR
GEOLOGICAL SURVEY

KNOXVILLE QUADRANGLE
IOWA—MARION CO.
7.5 MINUTE SERIES (TOPOGRAPHIC)
SE/4 KNOXVILLE 15' QUADRANGLE



Maped, edited, and published by the Geological Survey

Control by USGS and USC&GS

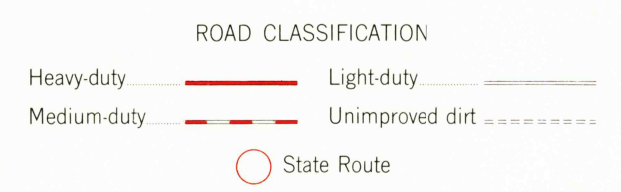
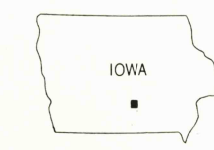
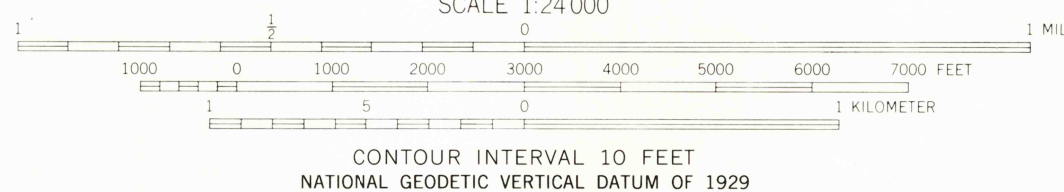
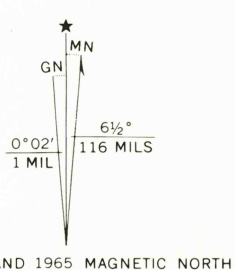
Topography by photogrammetric methods from aerial photographs taken 1964. Field checked 1965

Polyconic projection. 1927 North American datum. 10,000-foot grid based on Iowa coordinate system, south zone. 1000-meter Universal Transverse Mercator grid ticks, zone 15, shown in blue.

Red tint indicates area in which only landmark buildings are shown.

Areas covered by dashed light-blue pattern are subject to controlled inundation.

Fine red dashed lines indicate selected fence and field lines where generally visible on aerial photographs. This information is unchecked.



KNOXVILLE, IOWA
SE/4 KNOXVILLE 15' QUADRANGLE
41093-C1-TF-024

1965

DMA 7366 1 SE—SERIES V876

THIS MAP COMPLIES WITH NATIONAL MAP ACCURACY STANDARDS
FOR SALE BY U.S. GEOLOGICAL SURVEY, DENVER, COLORADO 80225, OR RESTON, VIRGINIA 22092
AND IOWA GEOLOGICAL SURVEY, IOWA CITY, IOWA 52240
A FOLDER DESCRIBING TOPOGRAPHIC MAPS AND SYMBOLS IS AVAILABLE ON REQUEST

To place on the predicted North American Datum 1983
move the projection lines 3 meters north and
17 meters east as shown by dashed corner ticks

USGS NM Historical Map
MAR 02 1990
REC'D FILE COPY