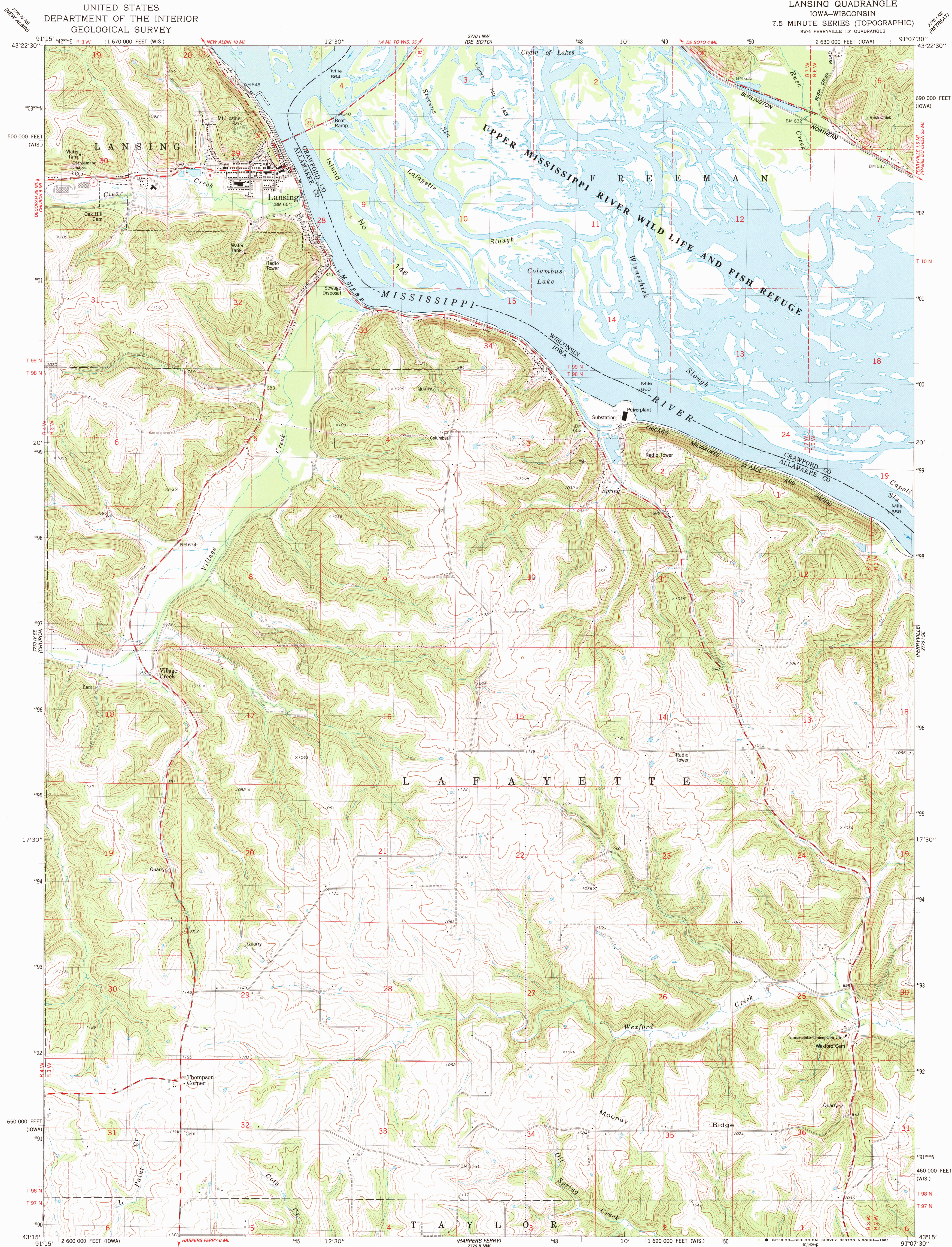
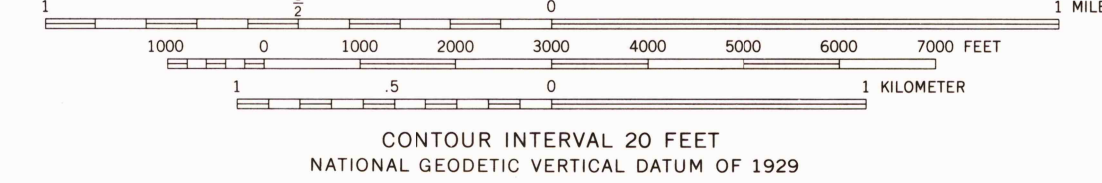
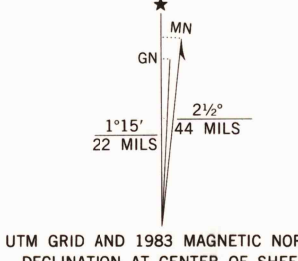


UNITED STATES
DEPARTMENT OF THE INTERIOR
GEOLOGICAL SURVEY

LANSING QUADRANGLE
IOWA-WISCONSIN
7.5 MINUTE SERIES (TOPOGRAPHIC)
SW/4 FERRYVILLE 15' QUADRANGLE



Mapped, edited, and published by the Geological Survey in cooperation with the Wisconsin Division of Highways and Wisconsin Geological and Natural History Survey Control by USGS and NOS/NOAA
Topography by photogrammetric methods from aerial photographs taken 1965. Revised from aerial photographs taken 1980-81. Field checked 1981. Map edited 1983.
Projection: Iowa coordinate system, north zone (Lambert conformal conic).
10,000-foot grid ticks based on Iowa coordinate system, north zone and Wisconsin coordinate system, south zone 1000-meter Universal Transverse Mercator grid, zone 15 1927 North American Datum.
To place on the predicted North American Datum 1983 move the projection lines 6 meters north and 12 meters east as shown by dashed corner ticks.
There may be private inholdings within the boundaries of the National or State reservations shown on this map.
Fine red dashed lines indicate selected fence and field lines where generally visible on aerial photographs. This information is unchecked.



ROAD CLASSIFICATION
Primary highway, hard surface
Secondary highway, hard surface
Light-duty road, hard or improved surface
Unimproved road
Interstate Route
U. S. Route
State Route

LANSING, IOWA-WIS.
SW/4 FERRYVILLE 15' QUADRANGLE
N4315-W9107.57.5

1983

DMA 7770 1 SW-SERIES V876