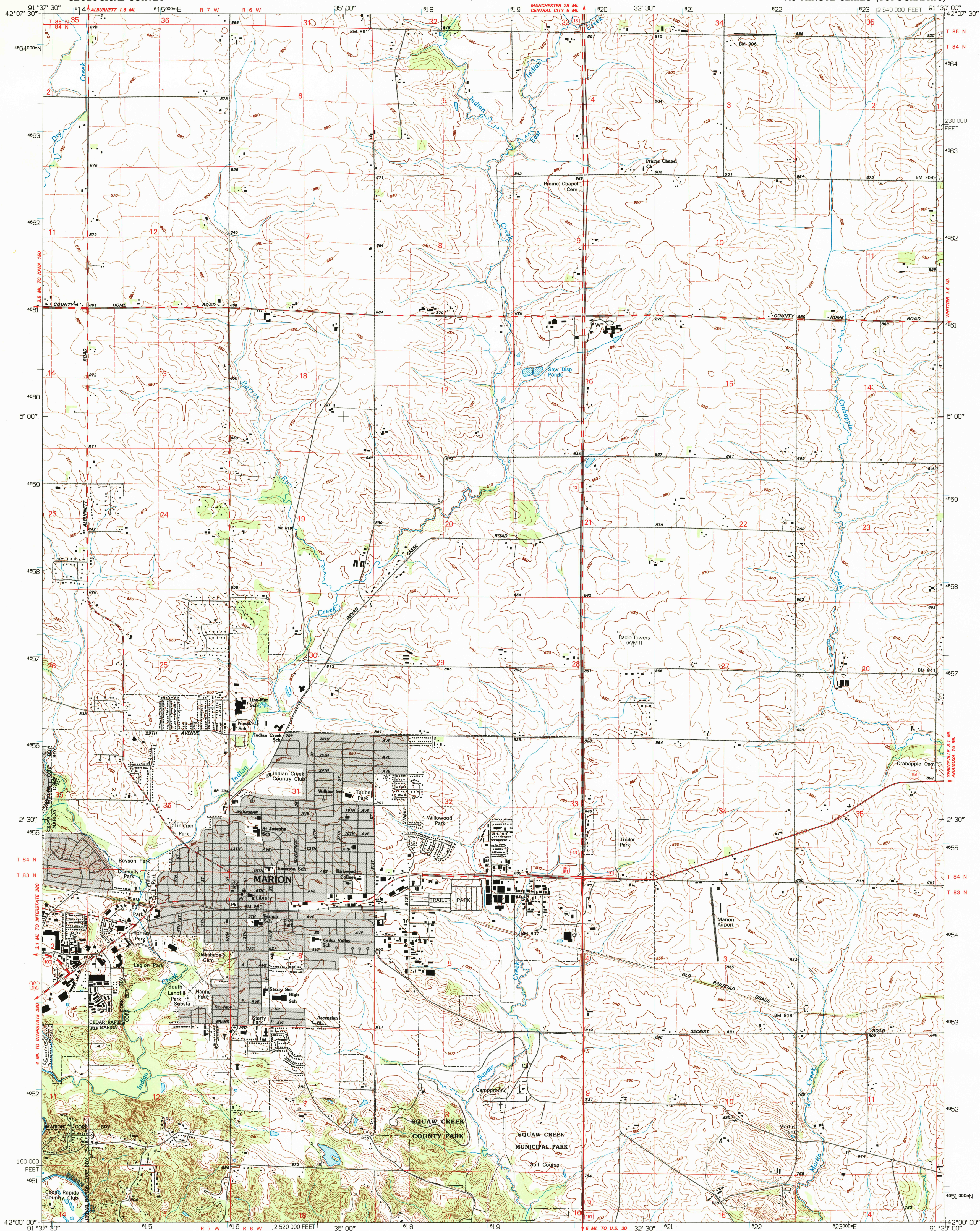


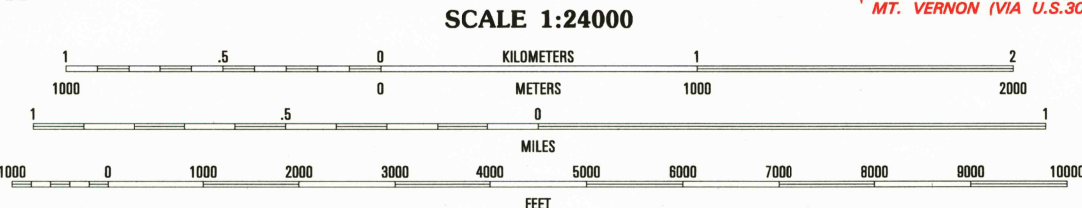
UNITED STATES
DEPARTMENT OF THE INTERIOR
GEOLOGICAL SURVEY

MARION QUADRANGLE
IOWA-LINN CO.
7.5 MINUTE SERIES (TOPOGRAPHIC)



Produced by the United States Geological Survey
Control by USGS and NOS/NOAA
Topography by photogrammetric methods from aerial photographs
taken 1965. Field checked 1968. Revised from aerial photographs
taken 1990. Field checked 1992. Map edited 1994
Universal Transverse Mercator projection
10,000-foot grid ticks: Iowa coordinate system, north zone
1000-meter Universal Transverse Mercator grid ticks, zone 15, shown in blue
1927 North American Datum (NAD 27)
North American Datum of 1983 (NAD 83) is shown by dashed corner ticks
The values of the shift between NAD 27 and NAD 83 for 7.5-minute
intersections are given in USGS Bulletin 1875
There may be private inholdings within the boundaries of
the National or State reservations shown on this map
Gray tint indicates areas in which only landmark buildings are shown
Fine red dashed lines indicate selected fence and field lines where
generally visible on aerial photographs. This information is unchecked

UTM GRID AND 1994 MAGNETIC NORTH
DECLINATION AT CENTER OF SHEET



CONTOUR INTERVAL 10 FEET
NATIONAL GEODETIC VERTICAL DATUM OF 1929

THIS MAP COMPLIES WITH NATIONAL MAP ACCURACY STANDARDS
FOR SALE BY U.S. GEOLOGICAL SURVEY, DENVER, COLORADO 80225, OR RESTON, VIRGINIA 22092
AND IOWA GEOLOGICAL SURVEY, IOWA CITY, IOWA 52240
A FOLDER DESCRIBING TOPOGRAPHIC MAPS AND SYMBOLS IS AVAILABLE ON REQUEST

ROAD CLASSIFICATION

Primary highway	Light-duty road, hard or
hard surface	improved surface
Secondary highway	Unimproved road
hard surface	

QUADRANGLE LOCATION

1	2	3
4	5	6
7	8	9

1 Lafayette
2 Central City
3 Prosser
4 Cedar Rapids North
5 Springville
6 Cedar Rapids South
7 Bertram
8 Mt. Vernon

MARION, IOWA
42091-A5-TF-024
1994
DMA 7668 II SE - SERIES V876

