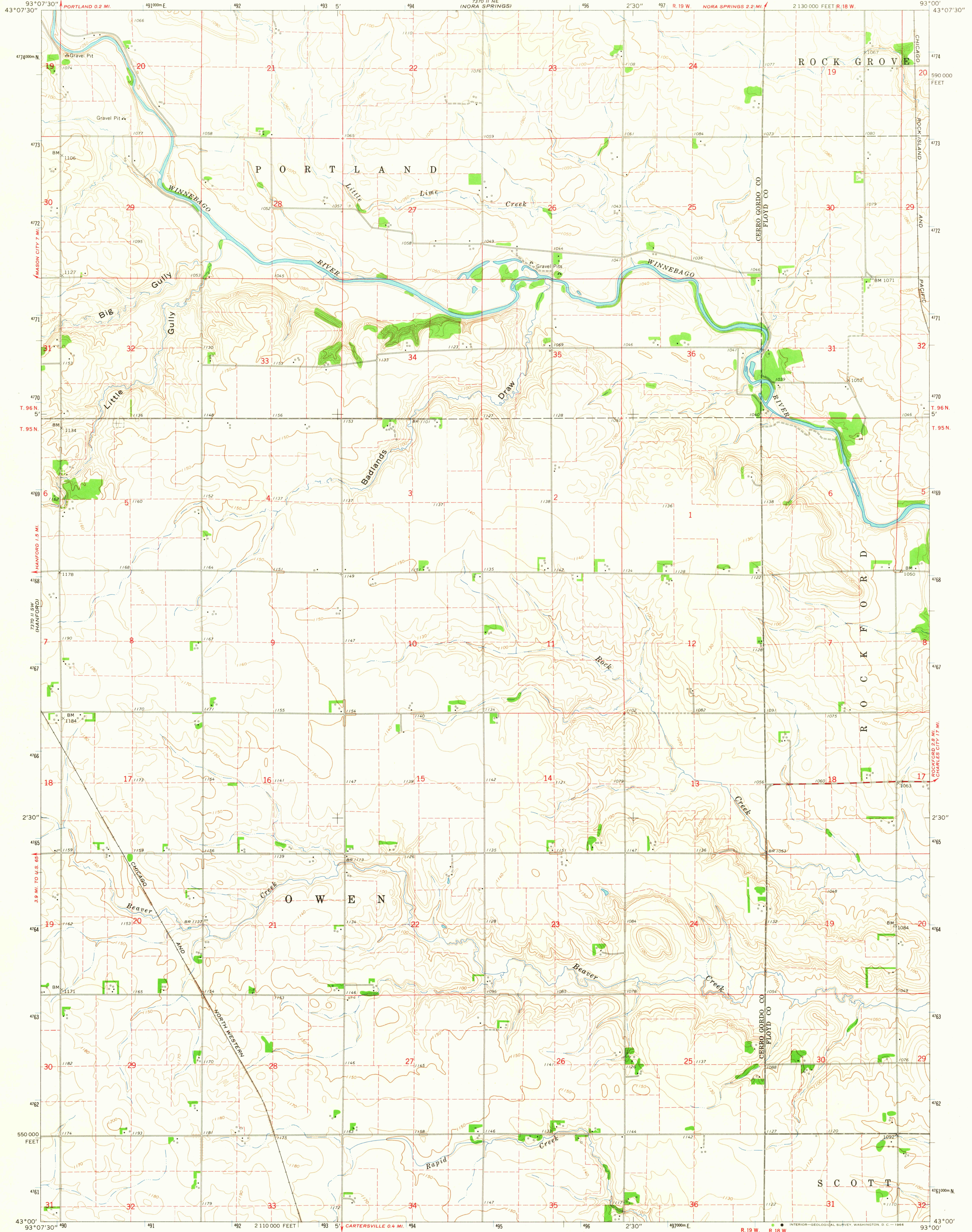
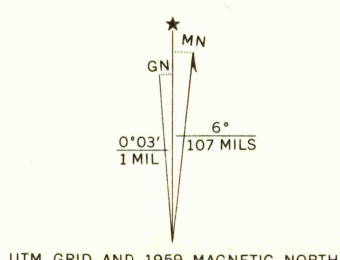


UNITED STATES
DEPARTMENT OF THE INTERIOR
GEOLOGICAL SURVEY

MASON CITY SE QUADRANGLE
IOWA
7.5 MINUTE SERIES (TOPOGRAPHIC)
SE/4 MASON CITY 15' QUADRANGLE

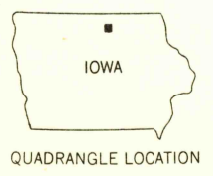


Maped, edited, and published by the Geological Survey
in cooperation with the Iowa Geological Survey
Control by USGS and USC&GS
Topography by photogrammetric methods from aerial
photographs taken 1957. Field checked 1959
Polyconic projection. 1927 North American datum
10,000-foot grid based on Iowa coordinate system, north zone
1000-meter Universal Transverse Mercator grid ticks,
zone 15, shown in blue
Fine red dashed lines indicate selected fence and field lines where
generally visible on aerial photographs
This information is unchecked



THIS MAP COMPLIES WITH NATIONAL MAP ACCURACY STANDARDS
FOR SALE BY U. S. GEOLOGICAL SURVEY, DENVER, COLORADO 80225 OR WASHINGTON, D. C. 20242
AND BY THE IOWA GEOLOGICAL SURVEY, IOWA CITY, IOWA
A FOLDER DESCRIBING TOPOGRAPHIC MAPS AND SYMBOLS IS AVAILABLE ON REQUEST

USGS
Historical File
Topographic Division



ROAD CLASSIFICATION
Medium-duty ——— Light-duty ———
Unimproved dirt ———

U.S.G.S.
FILE COPY
TOPOGRAPHIC DIVISION

MASON CITY SE, IOWA
SE/4 MASON CITY 15' QUADRANGLE
N4300—W9300/7.5
1959
AMS 7370 II SE—SERIES V876

2505
AUG 4 1956