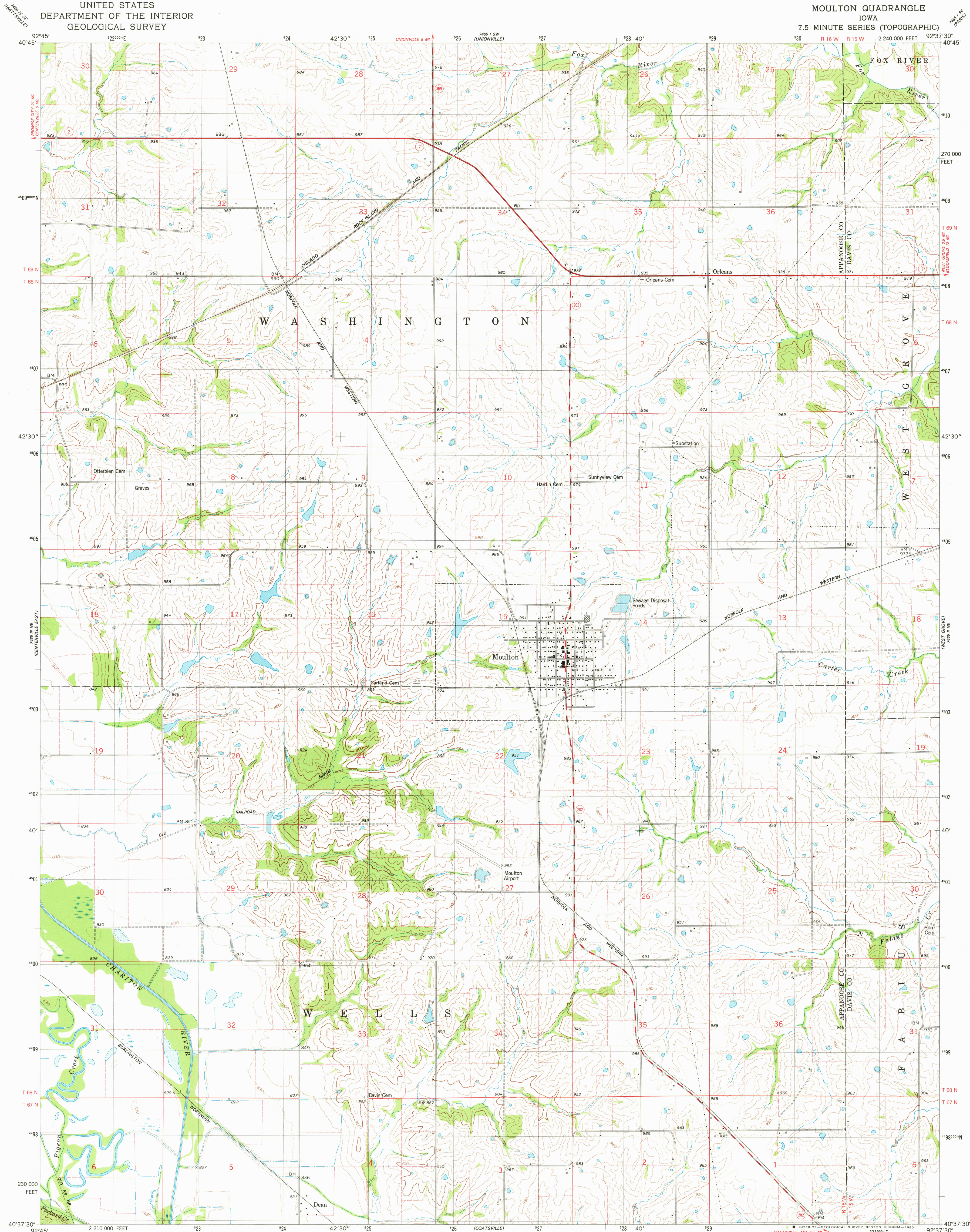


UNITED STATES
DEPARTMENT OF THE INTERIOR
GEOLOGICAL SURVEY

MOULTON QUADRANGLE
IOWA

7.5 MINUTE SERIES (TOPOGRAPHIC)



Mapped, edited, and published by the Geological Survey

Control by USGS and NOS/NOAA

Topography by photogrammetric methods from aerial photographs
taken 1974. Field checked 1976. Map edited 1979

Projection and 10,000-foot grid ticks: Iowa coordinate
system, south zone (Lambert conformal conic)

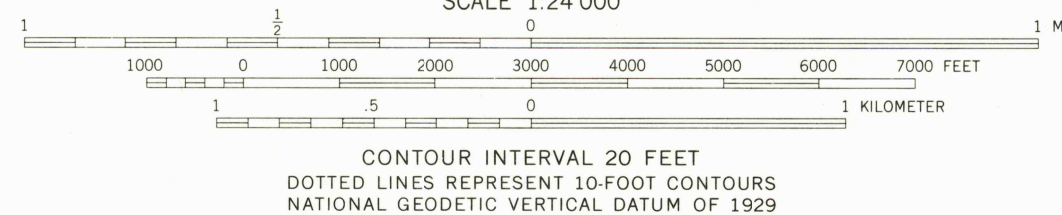
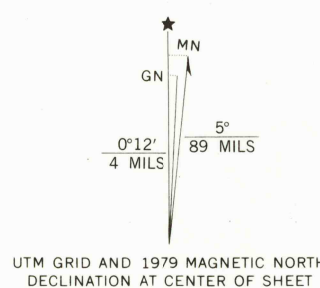
1000-meter Universal Transverse Mercator grid, zone 15

1927 North American Datum

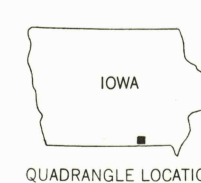
To place on the predicted North American Datum 1983
move the projection lines 2 meters north and

16 meters east as shown by dashed corner ticks

Fine red dashed lines indicate selected fence and field lines where
generally visible on aerial photographs. This information is unchecked



THIS MAP COMPLIES WITH NATIONAL MAP ACCURACY STANDARDS
FOR SALE BY U. S. GEOLOGICAL SURVEY, DENVER, COLORADO 80225, OR RESTON, VIRGINIA 22092
AND BY THE IOWA GEOLOGICAL SURVEY, IOWA CITY, IOWA 52240
A FOLDER DESCRIBING TOPOGRAPHIC MAPS AND SYMBOLS IS AVAILABLE ON REQUEST



ROAD CLASSIFICATION
Primary highway, hard surface
Secondary highway, hard surface
Unimproved road
Interstate Route
U. S. Route
State Route

USGS
Historical File
Topographic Division

MOULTON, IOWA
N4037.5-W9237.5/7.5

1979

DMA 7465 II NW-SERIES V876

AUG - 8 1980
1650