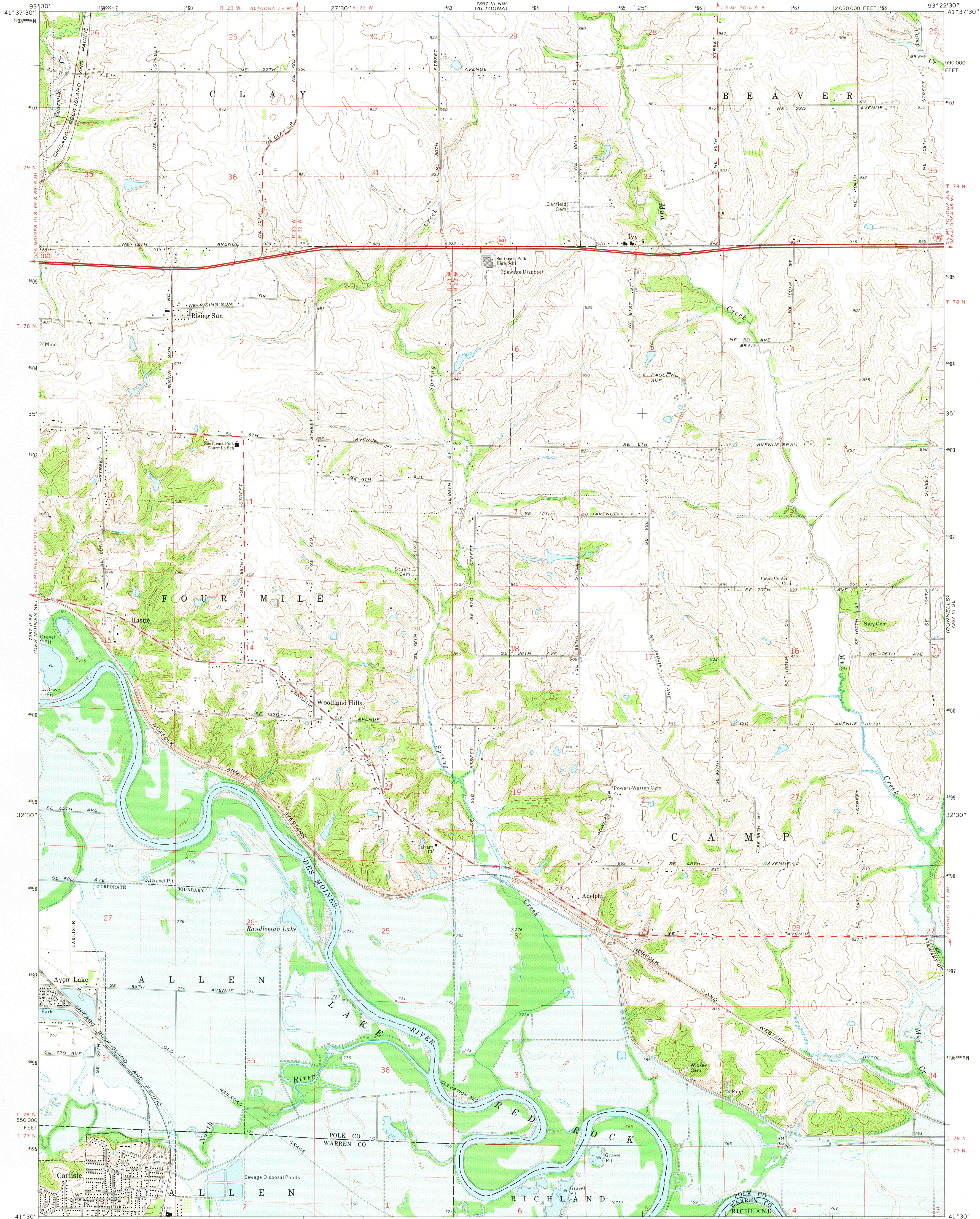


UNITED STATES
DEPARTMENT OF THE INTERIOR
GEOLOGICAL SURVEY

RISING SUN QUADRANGLE
IOWA
7.5 MINUTE SERIES (TOPOGRAPHIC)
SW 4 MITCHELLVILLE 15' QUADRANGLE



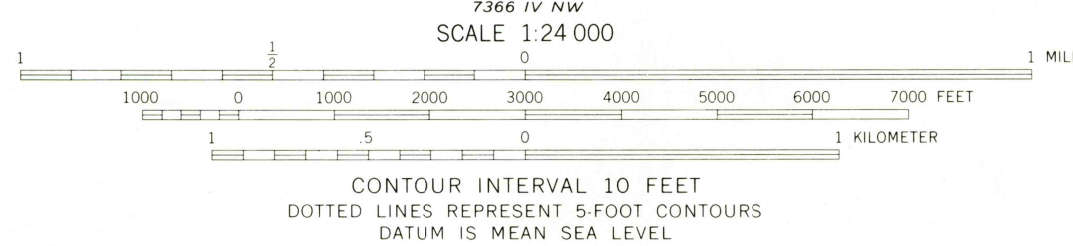
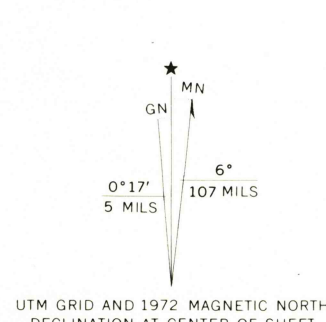
Maped, edited, and published by the Geological Survey
Control by USGS and USC&GS

Topography by photogrammetric methods from aerial
photographs taken 1971. Field checked 1972

Projection and 10,000-foot grid ticks: Iowa coordinate
system, south zone (Lambert conformal conic)
1000-meter Universal Transverse Mercator grid ticks,
zone 15, shown in blue. 1927 North American datum

Areas covered by dashed light-blue pattern
are subject to controlled inundation

Fine red dashed lines indicate selected fence and field lines where
generally visible on aerial photographs. This information is unchecked



ROAD CLASSIFICATION	
Primary highway, hard surface	Light-duty road, hard or improved surface
Secondary highway, hard surface	Unimproved road
Interstate Route	U. S. Route
	State Route

RISING SUN, IOWA
SW 4 MITCHELLVILLE 15' QUADRANGLE
N4130-W9322.5/7.5

USGS
Historical File
Topographic Division

AMS 7367 III SW-SERIES V876

JUL 11 1974