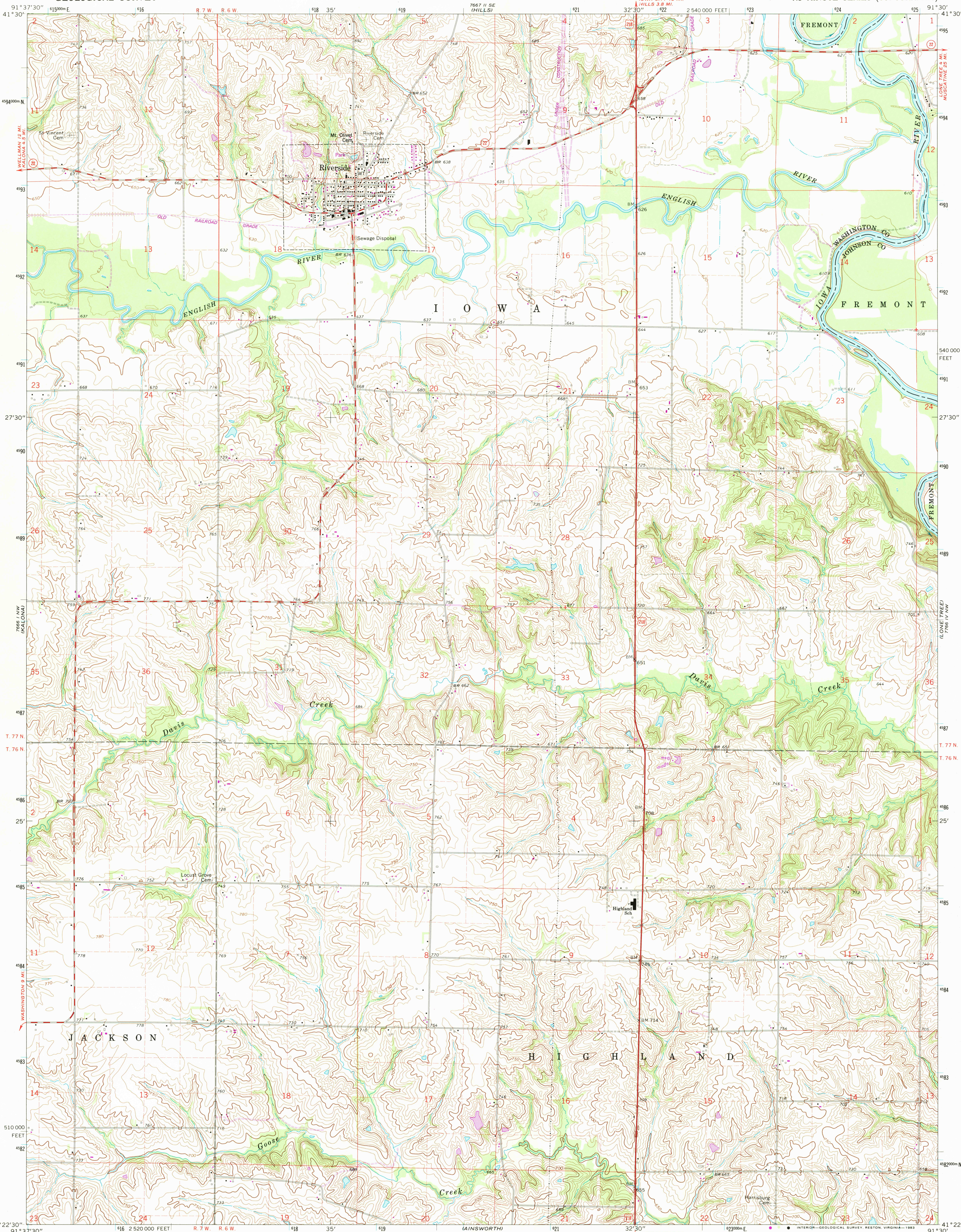


UNITED STATES
DEPARTMENT OF THE INTERIOR
GEOLOGICAL SURVEY

STATE OF IOWA
IOWA GEOLOGICAL SURVEY

RIVERSIDE QUADRANGLE
IOWA
7.5 MINUTE SERIES (TOPOGRAPHIC)



Mapped, edited, and published by the Geological Survey

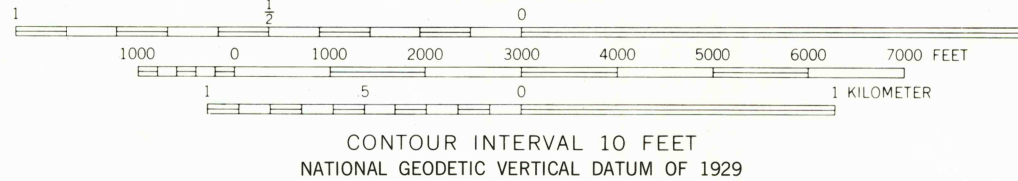
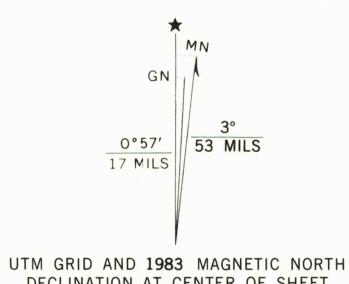
Control by USGS and NOS/NOAA

Topography by photogrammetric methods from aerial photographs taken 1967. Field checked 1969

Polyconic projection. 10,000-foot grid ticks based on Iowa coordinate system, south zone. 1000-meter Universal Transverse Mercator grid ticks, zone 15, shown in blue. 1927 North American Datum. To place on the predicted North American Datum 1983 move the projection lines 3 meters north and 13 meters east as shown by dashed corner ticks

Fine red dashed lines indicate selected fence and field lines where generally visible on aerial photographs. This information is unchecked

Revisions shown in purple and woodland compiled from aerial photographs taken 1980 and other sources. This information not field checked. Map edited 1983



THIS MAP COMPLIES WITH NATIONAL MAP ACCURACY STANDARDS FOR SALE BY U.S. GEOLOGICAL SURVEY, DENVER, COLORADO 80225, OR RESTON, VIRGINIA 22092 AND BY THE IOWA GEOLOGICAL SURVEY, IOWA CITY, IOWA 52240 A FOLDER DESCRIBING TOPOGRAPHIC MAPS AND SYMBOLS IS AVAILABLE ON REQUEST



ROAD CLASSIFICATION	
Primary highway, all weather, hard surface	Light-duty road, all weather, improved surface
Secondary highway, all weather, hard surface	Unimproved road, fair or dry weather
U.S. Route	State Route

RETURN TO:
USGS NATIONAL MAP ARCHIVES
RESTON, VA 22092

RIVERSIDE, IOWA
41091-05-TF-024

1969
PHOTOREVISED 1983
DMA 7666 I NE - SERIES V876

DEC 30 1983