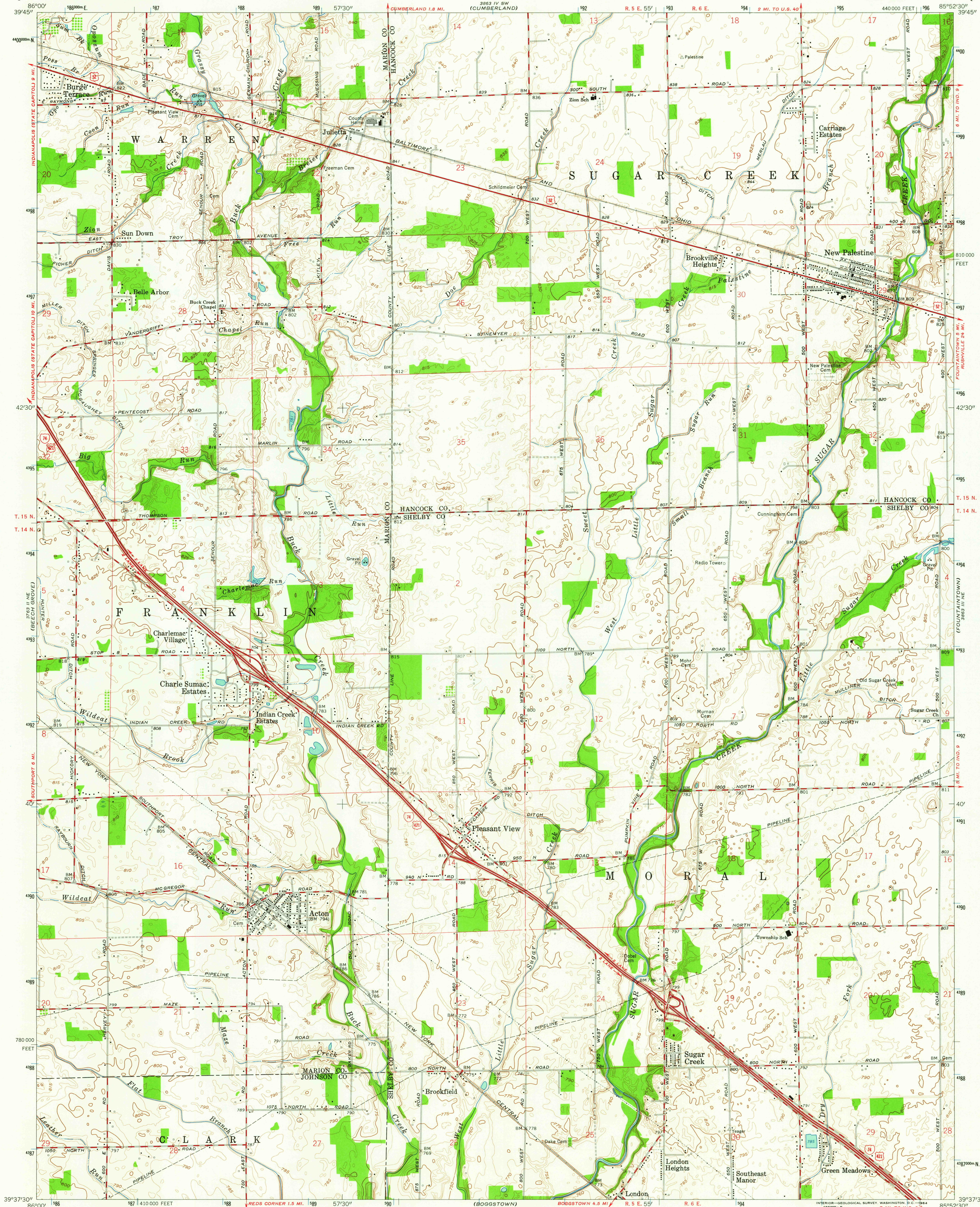
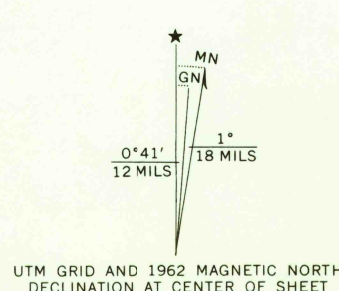


UNITED STATES
DEPARTMENT OF THE INTERIOR
GEOLOGICAL SURVEY

ACTON QUADRANGLE
INDIANA
7.5 MINUTE SERIES (TOPOGRAPHIC)



Mapped, edited, and published by the Geological Survey
Revised in cooperation with State of Indiana
Department of Conservation
Control by USGS, USCGS, and Indiana Flood Control and
Water Resources Commission
Planimetry by photogrammetric methods from aerial photographs
taken 1950. Topography by planetable surveys 1953. Revised 1962
Polyconic projection. 1927 North American datum
10,000-foot grid based on Indiana coordinate system, east zone
1000-meter Universal Transverse Mercator grid ticks,
zone 16, shown in blue



SCALE 1:24,000
CONTOUR INTERVAL 5 FEET
DATUM IS MEAN SEA LEVEL

USGS
Historical File
Topographic Division



ROAD CLASSIFICATION
Heavy-duty ——— Light-duty ———
Medium-duty ——— Unimproved dirt ———
Interstate Route ——— U.S. Route ———

ACTON, IND.
N3937.5—W8552.5/7.5

1962

AMS 3863 III NW—SERIES V851

FEB - 6 1964

2650