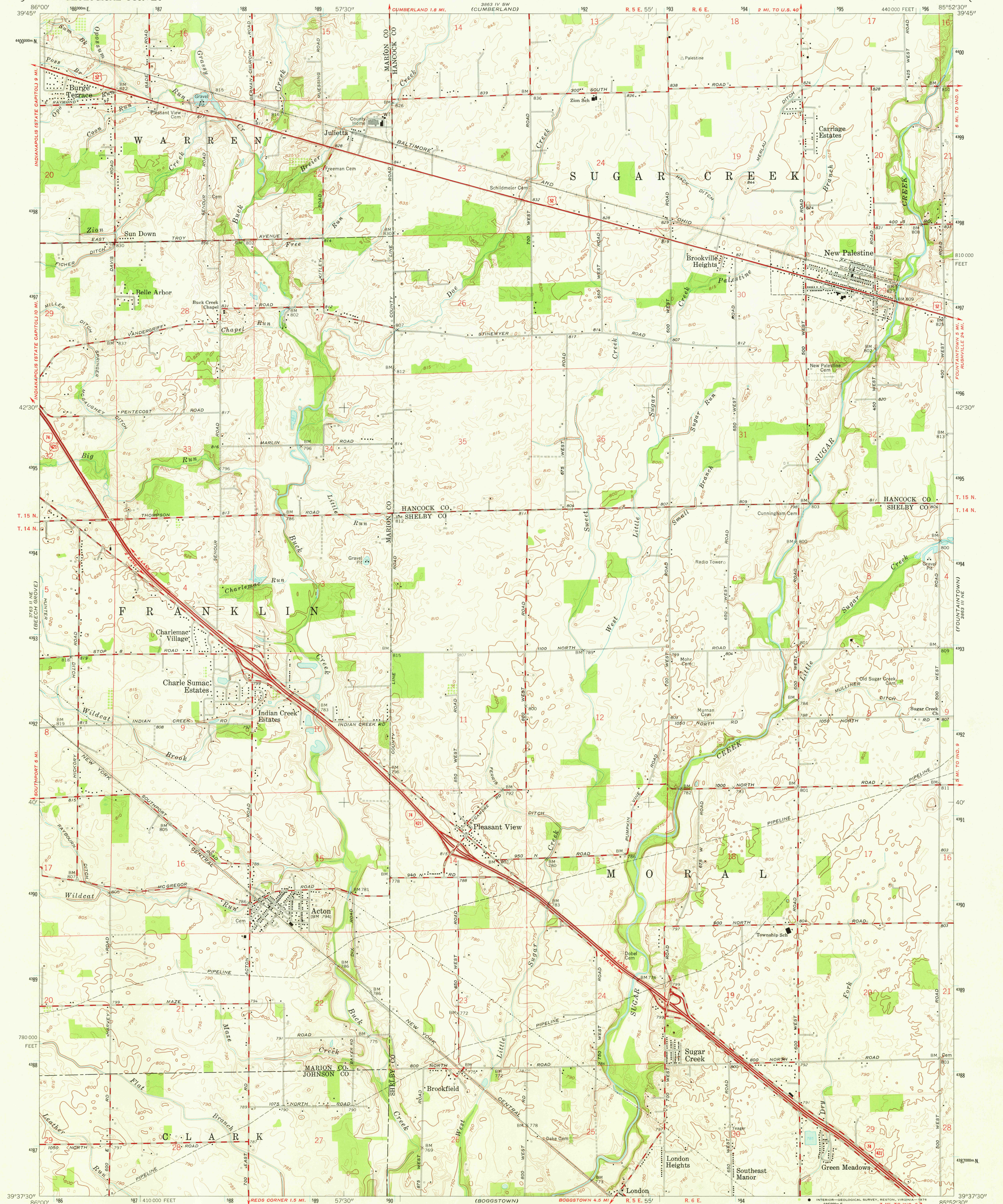


UNITED STATES
DEPARTMENT OF THE INTERIOR
GEOLOGICAL SURVEY

ACTON QUADRANGLE
INDIANA
7.5 MINUTE SERIES (TOPOGRAPHIC)



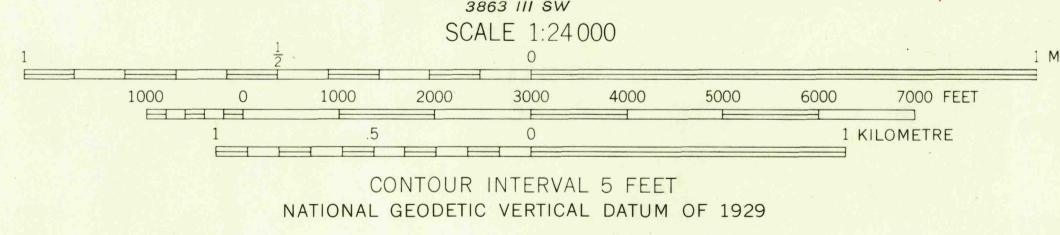
Maped, edited, and published by the Geological Survey
Revised in cooperation with State of Indiana
Department of Conservation

Control by USGS, USC&GS, and Indiana Flood Control and
Water Resources Commission

Planimetry by photogrammetric methods from aerial photographs
taken 1950. Topography by planimetric surveys 1953. Revised 1962

Polycyclic projection. 1927 North American datum
10,000-foot grid based on Indiana coordinate system, east zone
1000-metre Universal Transverse Mercator grid ticks,
zone 16, shown in blue

UTM GRID AND 1962 MAGNETIC NORTH
DECLINATION AT CENTER OF SHEET



THIS MAP COMPLIES WITH NATIONAL MAP ACCURACY STANDARDS
FOR SALE BY U. S. GEOLOGICAL SURVEY, RESTON, VIRGINIA 22092
AND INDIANA DEPARTMENT OF NATURAL RESOURCES, INDIANAPOLIS, INDIANA 46204
A FOLDER DESCRIBING TOPOGRAPHIC MAPS AND SYMBOLS IS AVAILABLE ON REQUEST

QUADRANGLE LOCATION

ROAD CLASSIFICATION
Heavy-duty ——— Light-duty ———
Medium-duty ——— Unimproved dirt ———
Interstate Route U. S. Route

USGS
Historical File
Topographic Division

ACTON, IND.
N3937.5—W8552.5/7.5

1962
AMS 3863 III NW—SERIES W851

MAY 20 1976