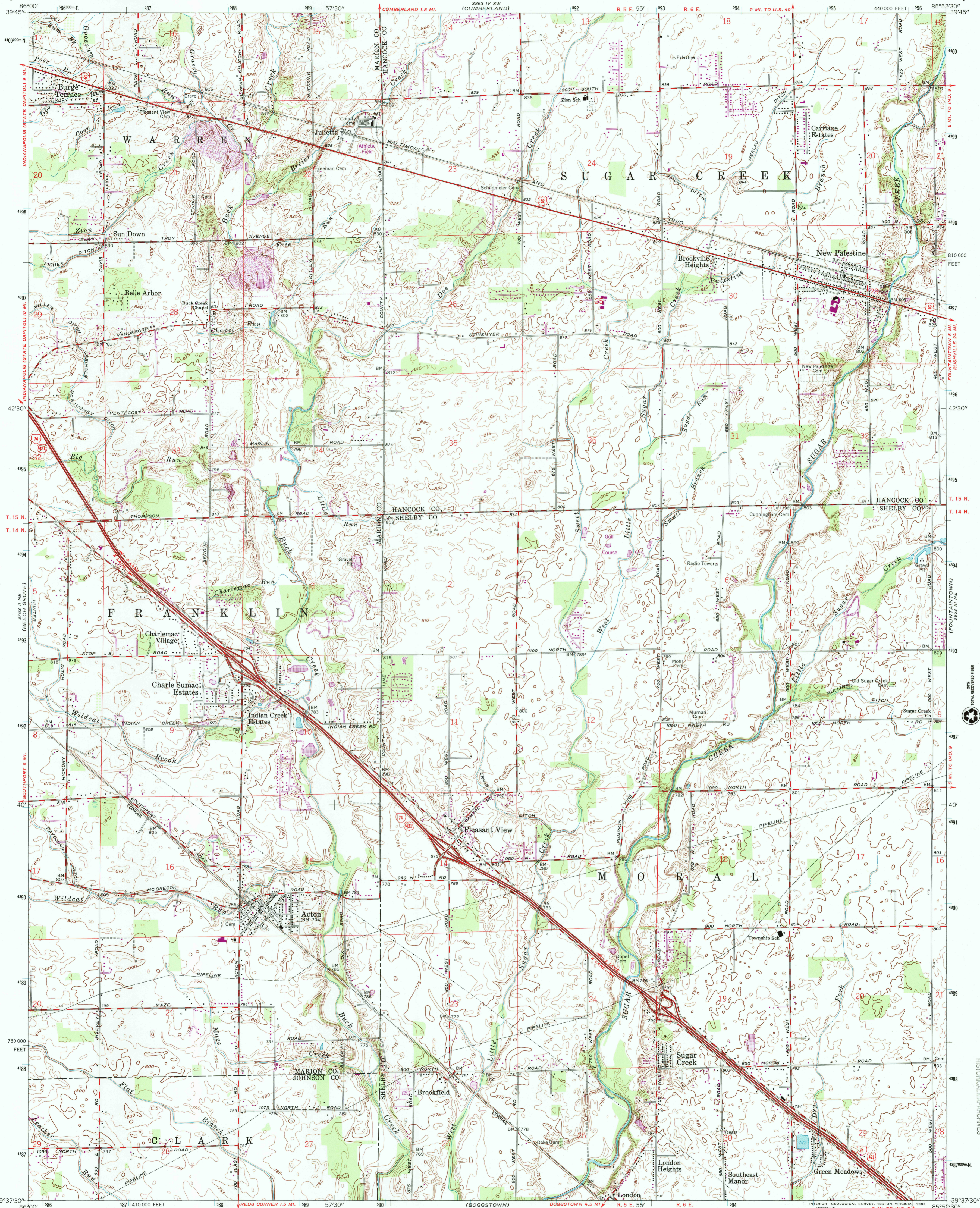


UNITED STATES  
DEPARTMENT OF THE INTERIOR  
GEOLOGICAL SURVEY

ACTON QUADRANGLE  
INDIANA  
7.5 MINUTE SERIES (TOPOGRAPHIC)



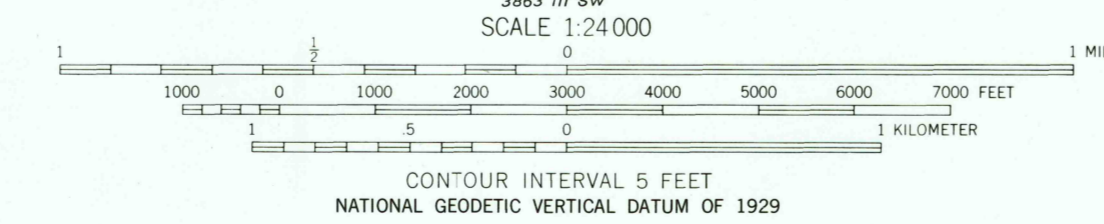
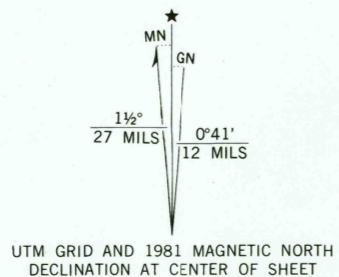
Mapped, edited, and published by the Geological Survey  
Revised in cooperation with State of Indiana  
Department of Conservation

Control by USGS, NOS/NOAA, and Indiana Flood Control and  
Water Resources Commission

Planimetry by photogrammetric methods from aerial photographs  
taken 1950. Topography by planimetric surveys 1953. Revised 1962

Polyconic projection. 10,000-foot grid ticks based on Indiana coordinate  
system, east zone. 1000-meter Universal Transverse Mercator grid  
ticks, zone 16, shown in blue. 1927 North American Datum

To place on the predicted North American Datum 1983 move the  
projection lines 2 meters south and 1 meter west as  
shown by dashed corner ticks



THIS MAP COMPLIES WITH NATIONAL MAP ACCURACY STANDARDS  
FOR SALE BY U.S. GEOLOGICAL SURVEY, DENVER, COLORADO 80225, OR RESTON, VIRGINIA 22092  
AND INDIANA DEPARTMENT OF NATURAL RESOURCES, INDIANAPOLIS, INDIANA 46204  
A FOLDER DESCRIBING TOPOGRAPHIC MAPS AND SYMBOLS IS AVAILABLE ON REQUEST

Revisions shown in purple and woodland compiled in  
cooperation with State of Indiana agencies from aerial  
photographs taken 1979 and other sources. This  
information not field checked. Map edited 1981

ROAD CLASSIFICATION  
Heavy-duty ——— Light-duty - - - - -  
Medium-duty . . . . . Unimproved dirt - - - - -  
Interstate Route ——— U.S. Route ———



ACTON, IND.  
N3937.5-W8552.5/7.5

1962  
PHOTOREVISED 1981  
DMA 3863 III NW-SERIES V851

RECEIVED  
NOV 30 2000  
USGS AND  
HISTORICAL MAP ARCHIVES

