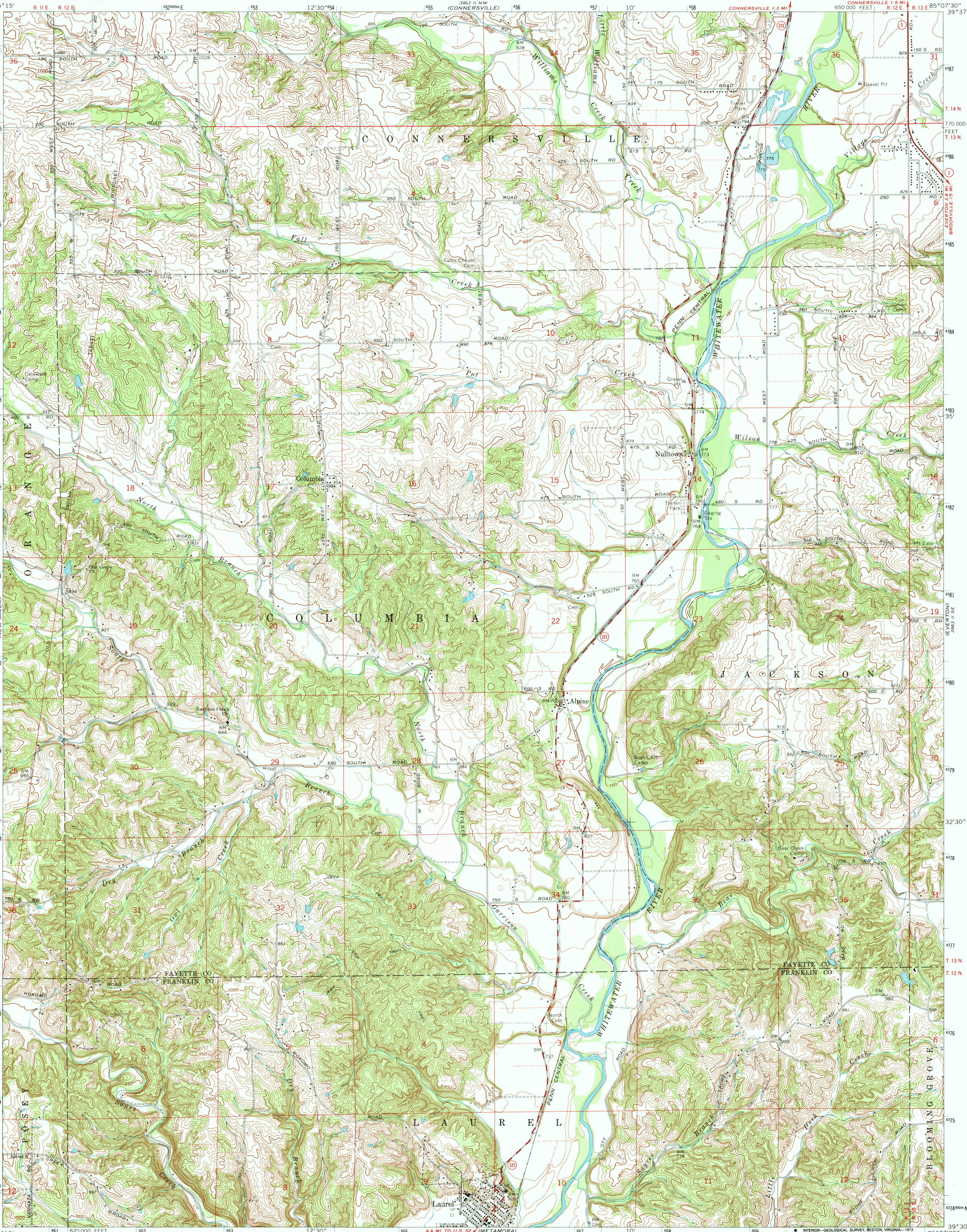




UNITED STATES  
DEPARTMENT OF THE INTERIOR  
GEOLOGICAL SURVEY

STATE OF INDIANA  
DEPARTMENT OF NATURAL RESOURCES  
INDIANAPOLIS, INDIANA  
(CONNERSVILLE)

ALPINE QUADRANGLE  
INDIANA  
7.5 MINUTE SERIES (TOPOGRAPHIC)  
CONNERSVILLE 1.5 MI.  
650 000 FEET  
R. 12 E. R. 13 E. 85° 07' 30"



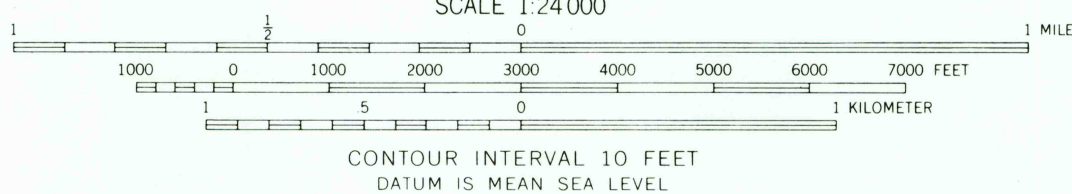
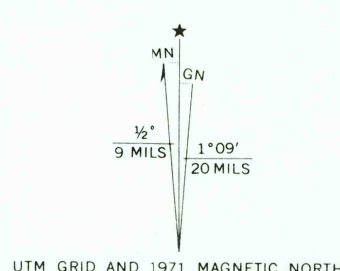
Mapped, edited, and published by the Geological Survey

Control by USGS, USC&GS, and Indiana Flood Control and  
Water Resources Commission

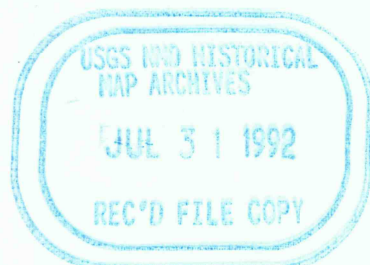
Topography by photogrammetric methods from aerial photographs  
taken 1953. Field checked 1956. Revised from aerial photographs  
taken 1971. Field checked 1971

Polyconic projection. 1927 North American datum  
10,000-foot grid based on Indiana coordinate system, east zone  
1000-meter Universal Transverse Mercator grid ticks,  
zone 16, shown in blue

Fine red dashed lines indicate selected fence and field lines where  
generally visible on aerial photographs. This information is unchecked



Primary highway,  
hard surface  
Secondary highway,  
hard surface  
Interstate Route  
U. S. Route  
State Route  
Light-duty road, hard or  
improved surface  
Unimproved road



ALPINE, IND.  
N3930-W8507.5/7.5

1971

AMS 3963 11 SW-SERIES V851

THIS MAP COMPLIES WITH NATIONAL MAP ACCURACY STANDARDS  
FOR SALE BY U. S. GEOLOGICAL SURVEY, WASHINGTON, D. C. 20242  
AND INDIANA DEPARTMENT OF NATURAL RESOURCES, INDIANAPOLIS, INDIANA 46204  
A FOLDER DESCRIBING TOPOGRAPHIC MAPS AND SYMBOLS IS AVAILABLE ON REQUEST