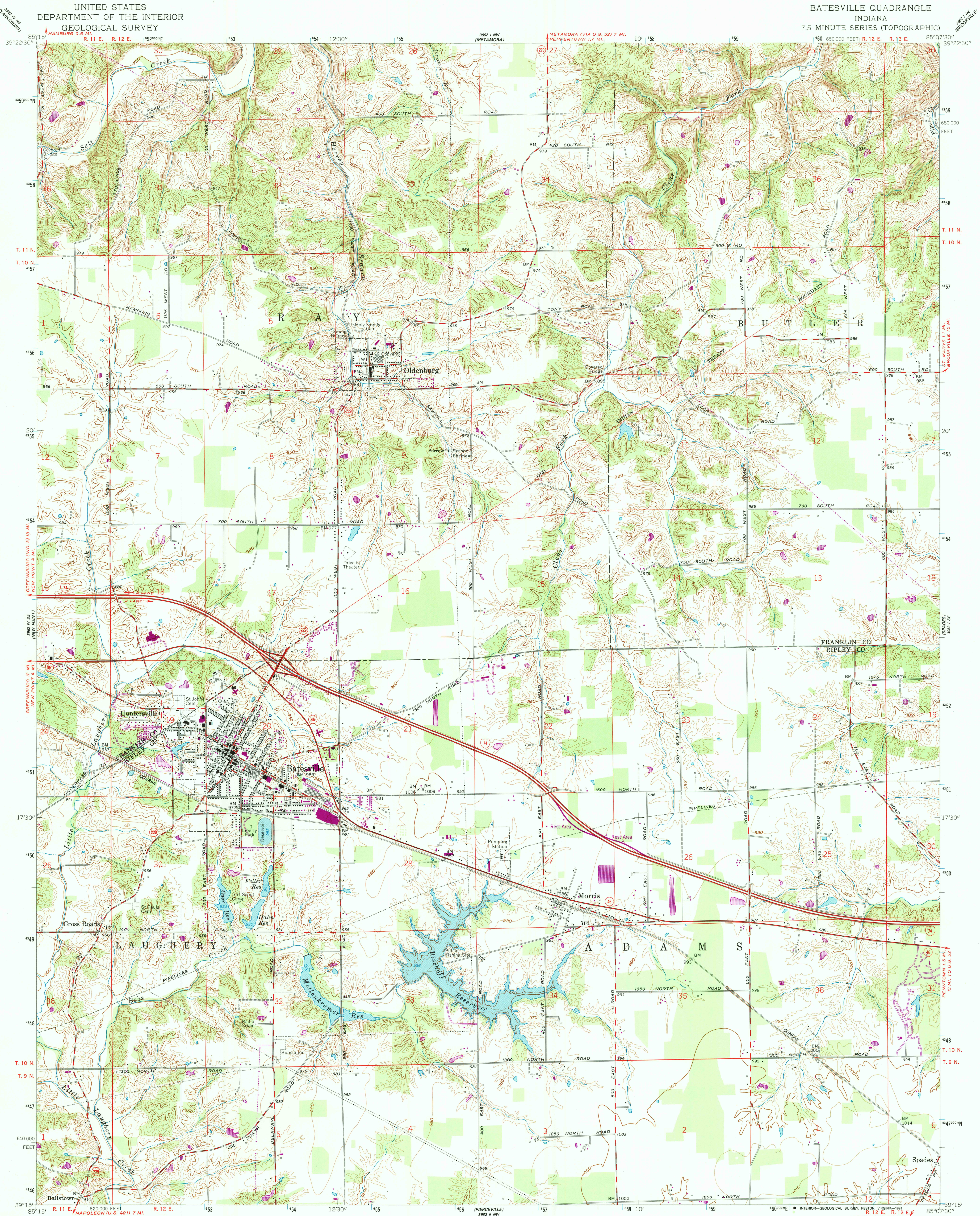


UNITED STATES  
DEPARTMENT OF THE INTERIOR  
GEOLOGICAL SURVEY

BATESVILLE QUADRANGLE  
INDIANA  
7.5 MINUTE SERIES (TOPOGRAPHIC)



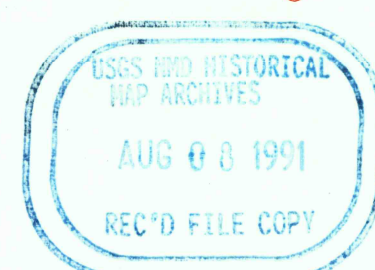
Maped, edited, and published by the Geological Survey  
in cooperation with State of Indiana Department of Conservation  
Control by USGS and USQ&GS  
Topography by planetable surveys 1944. Revised 1961  
Polyconic projection  
10,000-foot grid based on Indiana coordinate system, east zone  
1000-meter Universal Transverse Mercator grid ticks,  
zone 16, shown in blue. 1927 North American Datum  
To place on the predicted North American Datum 1983  
move the projection lines 2 meters south and  
4 meters west as shown by dashed corner ticks  
Revisions shown in purple compiled in cooperation with State of  
Indiana agencies from aerial photographs taken 1978 and other  
source data. This information not field checked. Map edited 1980

Map photoinspected 1983  
No major culture or drainage changes observed

SCALE 1:24,000  
CONTOUR INTERVAL 10 FEET  
NATIONAL GEODETIC VERTICAL DATUM OF 1929

THIS MAP COMPLIES WITH NATIONAL MAP ACCURACY STANDARDS  
FOR SALE BY U.S. GEOLOGICAL SURVEY, DENVER, COLORADO 80225, OR RESTON, VIRGINIA 22092  
AND INDIANA DEPARTMENT OF NATURAL RESOURCES, INDIANAPOLIS, INDIANA 46204  
A FOLDER DESCRIBING TOPOGRAPHIC MAPS AND SYMBOLS IS AVAILABLE ON REQUEST

ROAD CLASSIFICATION  
Heavy-duty ——— Light-duty ———  
Medium-duty ——— Unimproved dirt ———  
Interstate Route ——— State Route ———



BATESVILLE, IND.  
N 3915-W 8507.5/7.5  
PHOTOINSPECTED 1983  
1961  
PHOTOREVISED 1980  
DMA 3962 I SW-SERIES V851