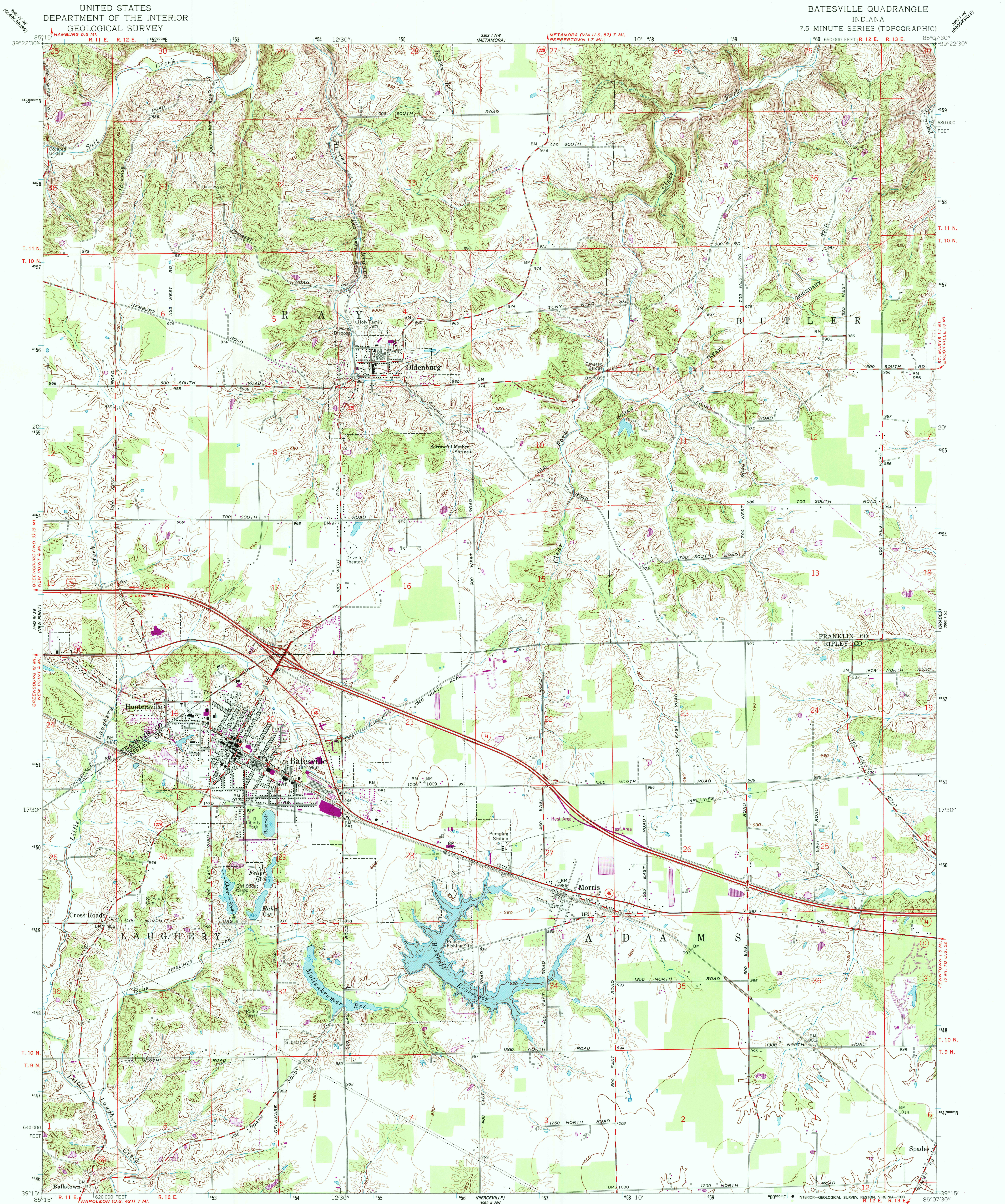
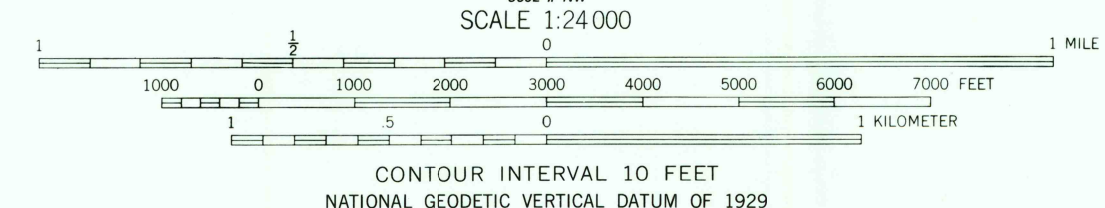
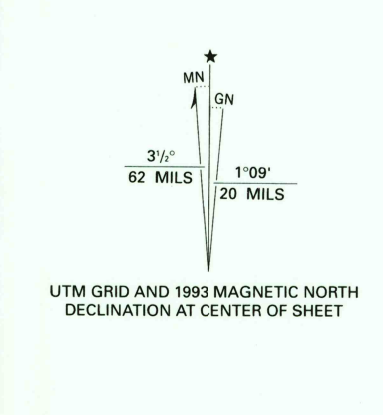


UNITED STATES
DEPARTMENT OF THE INTERIOR
GEOLOGICAL SURVEY

BATESVILLE QUADRANGLE
INDIANA
7.5 MINUTE SERIES (TOPOGRAPHIC)



Produced by the U. S. Geological Survey
in cooperation with Indiana Department of Natural Resources
Control by USGS and NOS/NOAA
Topography by planetable surveys 1944. Revised 1961
Projection and 10,000-foot grid ticks: Indiana coordinate
system, east zone (transverse Mercator)
1000-meter Universal Transverse Mercator grid ticks, zone 16, shown in blue
1927 North American Datum (NAD 27)
North American Datum of 1983 (NAD 83) is shown by dashed corner ticks
The values of the shift between NAD 27 and NAD 83 for 7.5-minute
intersections are given in USGS Bulletin 1875
Photoinspected from 1992 source; no major culture or drainage
changes observed. Boundaries revised and names verified 1993



THIS MAP COMPLIES WITH NATIONAL MAP ACCURACY STANDARDS
FOR SALE BY U.S. GEOLOGICAL SURVEY, DENVER, COLORADO 80225, OR RESTON, VIRGINIA 22092
AND INDIANA DEPARTMENT OF NATURAL RESOURCES, INDIANAPOLIS, INDIANA 46204
A FOLDER DESCRIBING TOPOGRAPHIC MAPS AND SYMBOLS IS AVAILABLE ON REQUEST

Revisions shown in purple compiled in cooperation with State of
Indiana agencies from aerial photography taken 1978 and other
source data. This information not field checked. Map edited 1980

ROAD CLASSIFICATION

Primary highway, hard surface	Light-duty road, hard or improved surface
Secondary highway, hard surface	Unimproved road
Interstate Route	U. S. Route
	State Route

QUADRANGLE LOCATION

INDIANA

BATESVILLE, IND.
39085-C2-TF-024
1961
PHOTOREVISED 1980
MINOR REVISION 1993
DMA 3962 1 SW-SERIES V851

USGS AND HISTORICAL
MAP ARCHIVES
DEC 16 1993
REC'D FILE COPY