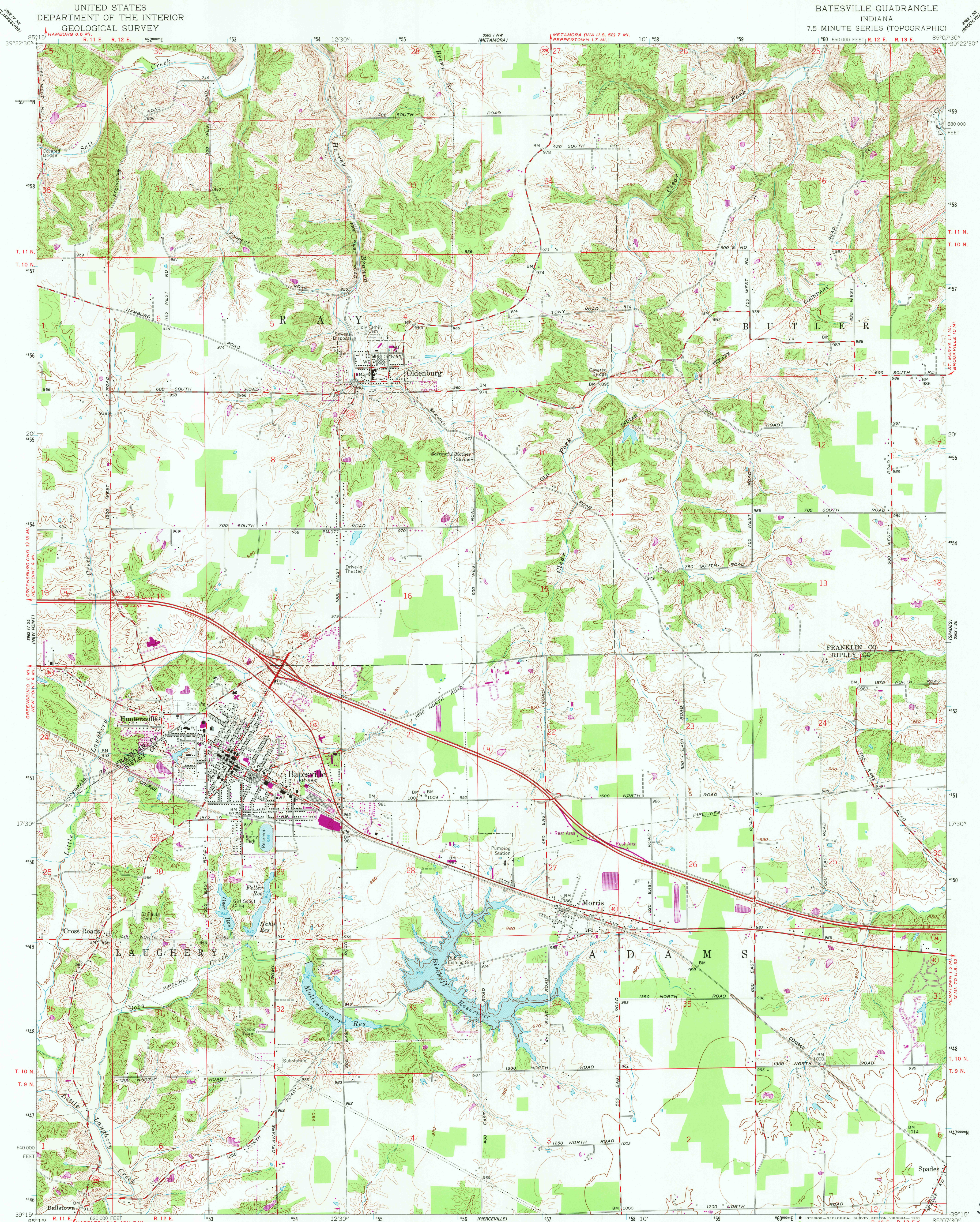


UNITED STATES  
DEPARTMENT OF THE INTERIOR  
GEOLOGICAL SURVEY

BATESVILLE QUADRANGLE  
INDIANA  
7.5 MINUTE SERIES (TOPOGRAPHIC)



Mapped, edited, and published by the Geological Survey  
in cooperation with State of Indiana Department of Conservation  
Control by USGS and USC&GS

Topography by planetable surveys 1944. Revised 1961

Polyconic projection

10,000-foot grid based on Indiana coordinate system, east zone

1000-meter Universal Transverse Mercator grid ticks,

zone 16, shown in blue. 1927 North American Datum

To place on the predicted North American Datum 1983

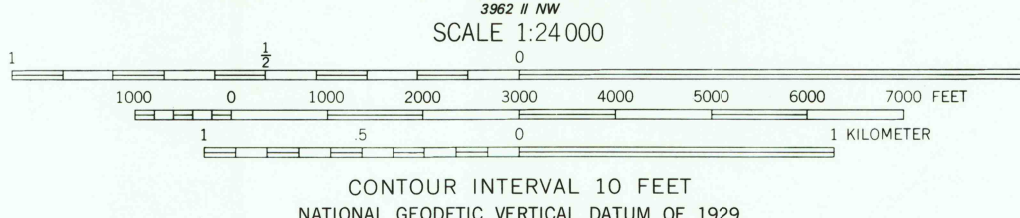
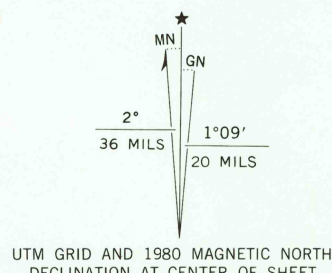
move the projection lines 2 meters south and

4 meters west as shown by dashed corner ticks

Revisions shown in purple compiled in cooperation with State of

Indiana agencies from aerial photographs taken 1978 and other

source data. This information not field checked. Map edited 1980



ROAD CLASSIFICATION	
Heavy-duty	Light-duty
Medium-duty	Unimproved dirt
Interstate Route	State Route

USGS  
HISTORICAL FILE  
NATIONAL MAPPING DIVISION

BATESVILLE, IND.  
N 3915-W 8507.5/7.5

1961  
PHOTOREVISED 1980  
DMA 3962 1 SW-SERIES V851

JUN 29 1981

2120