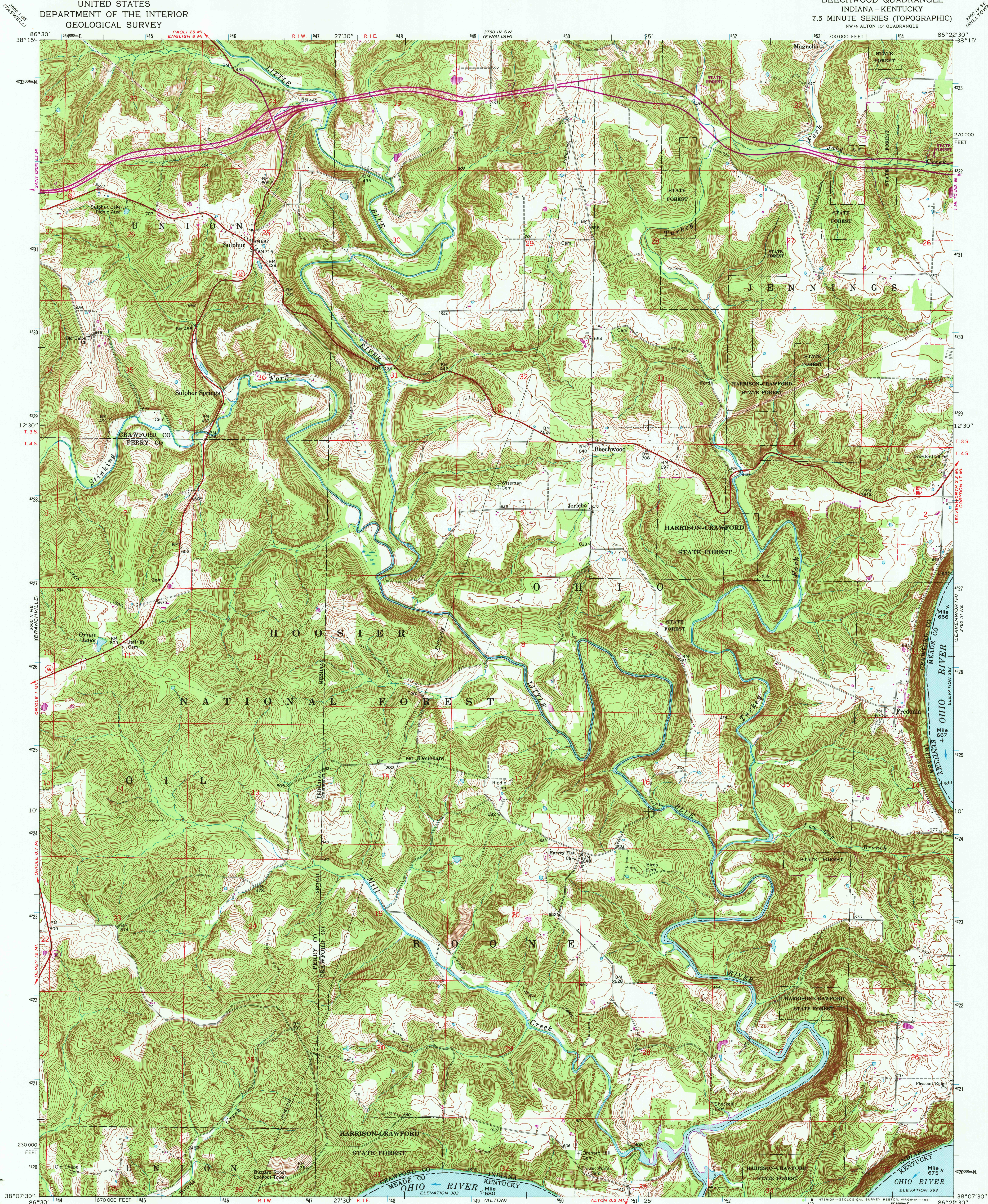


UNITED STATES
DEPARTMENT OF THE INTERIOR
GEOLOGICAL SURVEY

BEECHWOOD QUADRANGLE
INDIANA-KENTUCKY
7.5 MINUTE SERIES (TOPOGRAPHIC)
NW/4 ALTON 15' QUADRANGLE



Mapped, edited, and published by the Geological Survey
Revised in cooperation with Indiana Department
of Natural Resources

Control by USGS, USC&GS, USCE, and Indiana Flood Control
and Water Resources Commission

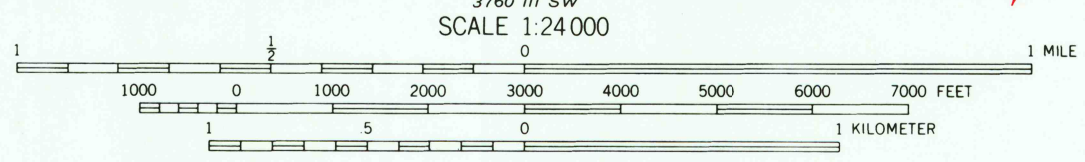
Topography by photogrammetric methods from aerial photographs
taken 1947 and 1948. Field checked 1950. Revised from aerial
photographs taken 1969. Field checked 1970

Polyconic projection
10,000-foot grid based on Indiana coordinate system, west zone
1000-meter Universal Transverse Mercator grid ticks,
zone 16, shown in blue. 1927 North American Datum

To place on the predicted North American Datum 1983
move the projection lines 3 meters south and
1 meter west as shown by dashed corner ticks

The state boundary as shown represents the approximate position
of the low waterline as determined from U.S. Corps of Engineers
Ohio River charts, surveyed 1912, and supplementary information

There may be private inholdings within the boundaries
of the National or State reservations shown on this map



THIS MAP COMPLIES WITH NATIONAL MAP ACCURACY STANDARDS
FOR SALE BY U.S. GEOLOGICAL SURVEY, RESTON, VIRGINIA 22092,
INDIANA DEPARTMENT OF NATURAL RESOURCES, INDIANAPOLIS, INDIANA 46204,
KENTUCKY GEOLOGICAL SURVEY, LEXINGTON, KENTUCKY 40506,
AND KENTUCKY DEPARTMENT OF COMMERCE, FRANKFORT, KENTUCKY 40601
A FOLDER DESCRIBING TOPOGRAPHIC MAPS AND SYMBOLS IS AVAILABLE ON REQUEST

Revisions shown in purple compiled in cooperation with State of
Indiana agencies from aerial photographs taken 1978 and other
source data. Contours adjusted adjacent to certain photorevised
hydrographic features. This information not field checked
Map edited 1981

ROAD CLASSIFICATION
Primary highway, hard surface
Secondary highway, hard surface
Unimproved road
Interstate Route
U. S. Route
State Route

USGS
HISTORICAL FILE
NATIONAL MAPPING DIVISION

BEECHWOOD, IND.-KY.
NW/4 ALTON 15' QUADRANGLE
N3807.5-W8622.5/7.5

1970
PHOTOREVISED 1981
DMA 3760 III NW-SERIES V851

JUL 20 1981
3950