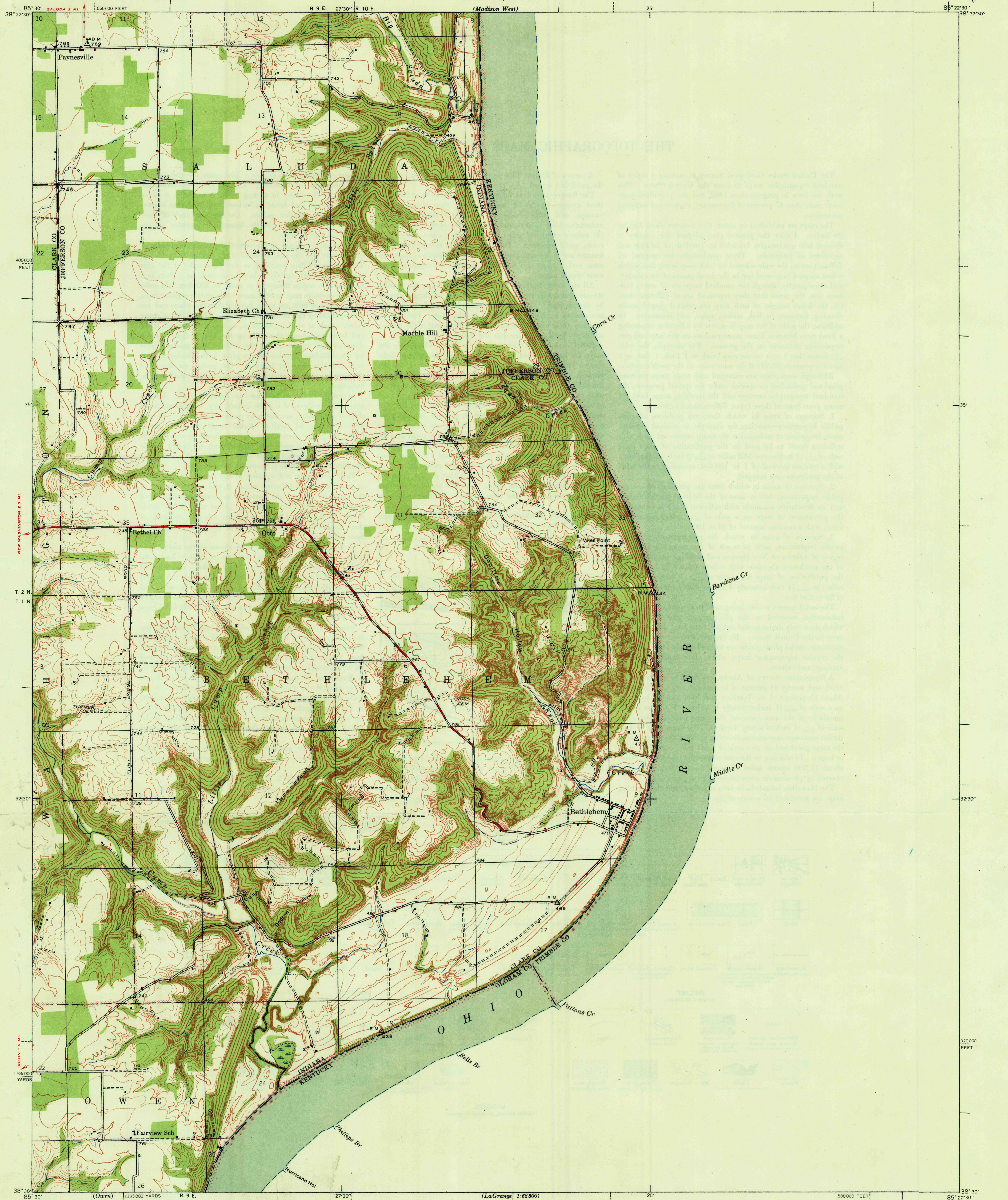


UNITED STATES  
DEPARTMENT OF THE INTERIOR  
GEOLOGICAL SURVEY

STATE OF INDIANA  
INDIANA DEPARTMENT OF CONSERVATION  
INDIANAPOLIS, INDIANA

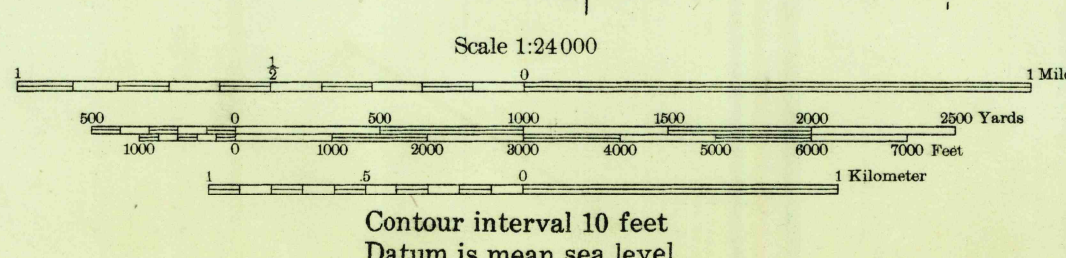
INDIANA-KENTUCKY  
BETHLEHEM QUADRANGLE  
7 1/2-MINUTE SERIES

U. S. G. S.  
FILE COPY  
Inspection and Editing.



Albert Pike, Division Engineer  
Topography by G. F. Westinghouse  
Surveyed in 1938

ROAD CLASSIFICATION  
1947  
Dependable hard surface  
Heavy duty road  
Secondary hard surface  
All weather road  
More than two lanes indicated along road with tick at point of change  
U. S. Route (15)  
Unimproved grade  
Culvert  
State Road (2)  
2 Lanes, 2 Lanes  
TRUE NORTH  
MAGNETIC NORTH  
APPROXIMATE MEAN  
DECLINATION, 1938



USCS  
Historical File  
Topographic Division

U. S. G. S.  
FILE COPY  
Inspection and Editing.

Polyconic projection. 1927 North American datum  
5000 yard grid based on U. S. zone system, C  
10000 foot grid based on Indiana (East)  
rectangular coordinate system

BETHLEHEM, IND.-KY.  
Edition of 1948  
N 3830 - W 8522.5/7.5

FEB 20 1948

2115