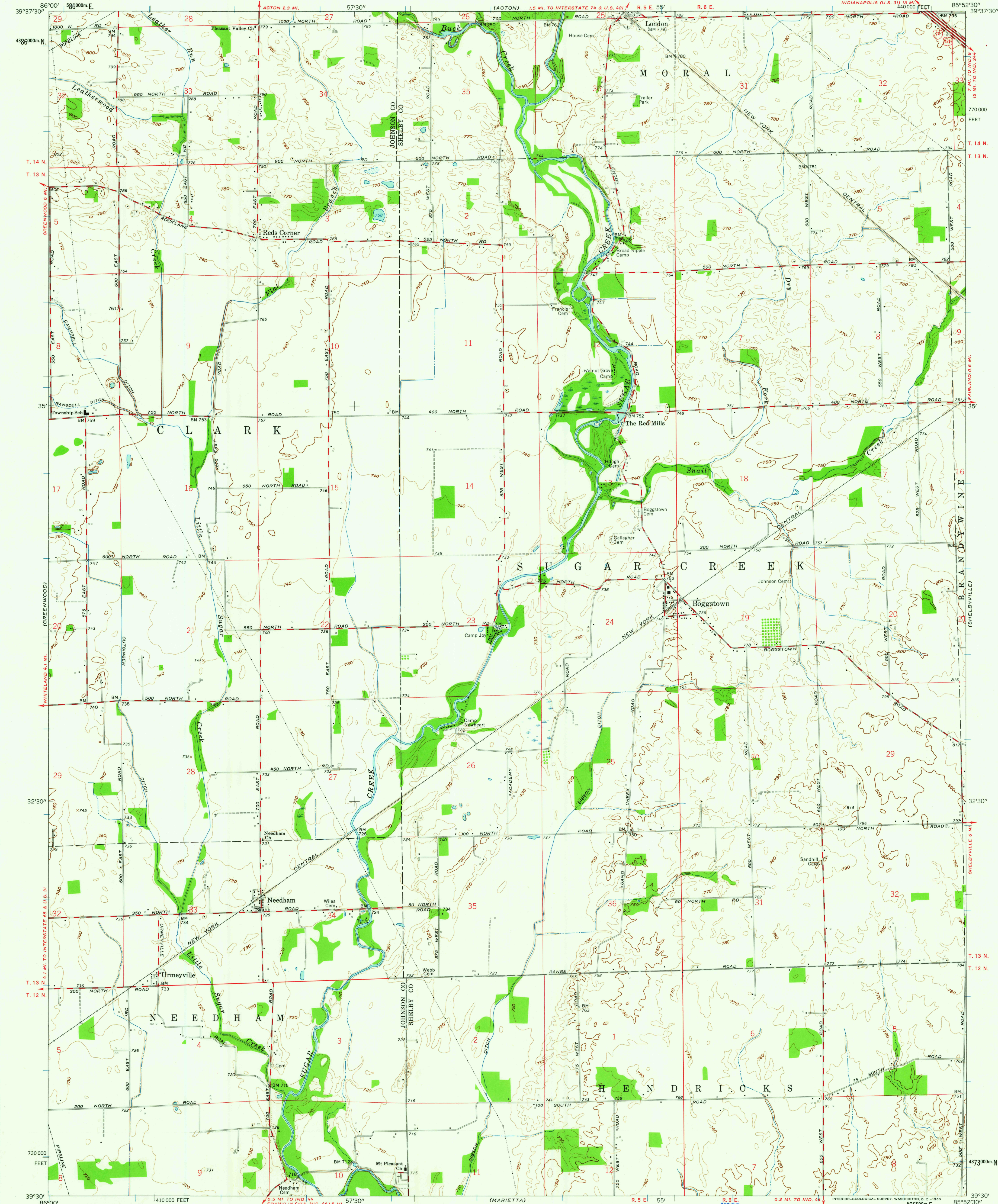


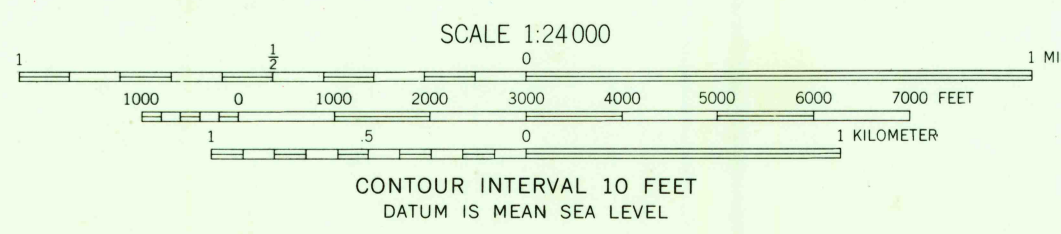
UNITED STATES
DEPARTMENT OF THE INTERIOR
GEOLOGICAL SURVEY

BOGGSTOWN QUADRANGLE
INDIANA
7.5 MINUTE SERIES (TOPOGRAPHIC)



Mapped, edited, and published by the Geological Survey
Revised in cooperation with State of Indiana
Department of Conservation
Control by USGS, USC&GS, and Indiana Flood Control and
Water Resources Commission
Planimetry by photogrammetric methods from aerial photographs
taken 1950. Topography by planimetric surveys 1952-1953
Revised 1962
Polyconic projection. 1927 North American datum
10,000-foot grid based on Indiana coordinate system, east zone
1000-meter Universal Transverse Mercator grid ticks,
zone 16, shown in blue

TRUE NORTH
MAGNETIC NORTH
APPROXIMATE MEAN
DECLINATION, 1962



THIS MAP COMPLIES WITH NATIONAL MAP ACCURACY STANDARDS
FOR SALE BY U.S. GEOLOGICAL SURVEY, WASHINGTON 25, D. C.
AND INDIANA DEPARTMENT OF CONSERVATION, INDIANAPOLIS, INDIANA
A FOLDER DESCRIBING TOPOGRAPHIC MAPS AND SYMBOLS IS AVAILABLE ON REQUEST

USGS
Historical File
Topographic Division



ROAD CLASSIFICATION
Heavy-duty ——— Light-duty ———
Medium-duty ——— Unimproved dirt ———
Interstate Route ——— U.S. Route ———

USGS
FILE COPY
TOPOGRAPHIC DIVISION

BOGGSTOWN, IND.
N 3930—W 8552.5/7.5
1962

2720